



## CONTACT US

Block no.: 497, AT- Mahuvej, Dist.: Mangrol, Surat, Gujarat – 394125, India.  
+91 77889 92201 | [info@believeintl.com](mailto:info@believeintl.com) | [domestic@believeintl.com](mailto:domestic@believeintl.com) | [export@believeintl.com](mailto:export@believeintl.com)  
website: [www.believeintl.com](http://www.believeintl.com)



SCAN QR CODE  
WEBSITE  
INFORMATION

# INDEX

**Believe**<sup>®</sup>  
INTERNATIONAL LIMITED

**Believe**<sup>®</sup>  
INTERNATIONAL LIMITED

1.	Believe at Glance	02
2.	Our Business Portfolios	03
3.	Believe Journey	04
4.	Our Core Value	05
5.	Formulation	06
6.	Formulation Capacity	07
7.	What we provide	08
8.	API & Intermediate	09
9.	R&D and F&D Centre	10
10.	Global Presences	11
11.	Why Choose Believe?	12
12.	What sets Believe apart	13
13.	Our Corporate Social Responsibilities	14
14.	Believe Team	15
15.	Accreditations of Believe	16





## ACCREDITATIONS OF BELIEVE





## BELIEVE AT GLANCE

### WHO WE ARE

Incorporated in 2011, BELIEVE INTERNATIONAL LIMITED is WHO-GMP & ISO 9001: 2015 compliant organization working with a mission and vision of a **"WORKING FOR A HEALTHIER WORLD"**. We as a prominent leader focus on new innovation and technology for improving our products for healthy life of people around us. People around the globe approach us as leading manufacturer and distributor of quality medicines.

### MISSION

Our mission is to improve the health and well-being of people worldwide by developing and delivering innovative pharmaceutical solutions. To denote ourselves for optimizing health outcomes and improve patient's quality of life without compromising on our core values of integrity, good ethics and commitment.

### VISION

Our vision is to become global recognized leader in the pharmaceutical industry for our unwavering commitment of excellence, innovation and patient-centricity. We want to mark our presence in society by creating a portfolio of low-cost and high-quality medicines.



## OUR BUSINESS PORTFOLIOS

### FORMULATION:

Since 2023, we have started our own manufacturing facility to cater customers with cost effective and quality medicines. Our experienced scientists and formulation experts are dedicated to provide high quality pharmaceutical products that are safe and effective for our customers. Our state-of-the-art manufacturing facility is equipped with the latest technology and equipment to ensure high-quality products that meet the standards of the WHO-GMP & PICS guidelines.



### API & INTERMEDIATES

Believe has started API & Intermediate operations with the state-of-art manufacturing plant in 2017 to develop new molecules and consistently expand our business with innovation and excellence.



### OUR DIVISIONS

**BELIEVE HEALTHCARE:** At **BELIEVE HEALTHCARE**, We believe that good health is the foundation for a happy life. Discover how we can help you live your best life yet.

**BELIEVE WELLNESS:** **BELIEVE WELLNESS** firmly stand on the ethos of integration of body, mind & spirit. The realization that everything we Do, think, Feel & Believe has an effect on our state of well-being.



### AUTHORIZED DISTRIBUTORS OF PHARMACEUTICAL INDUSTRIES

We are leading distributors of standard and generic medicines

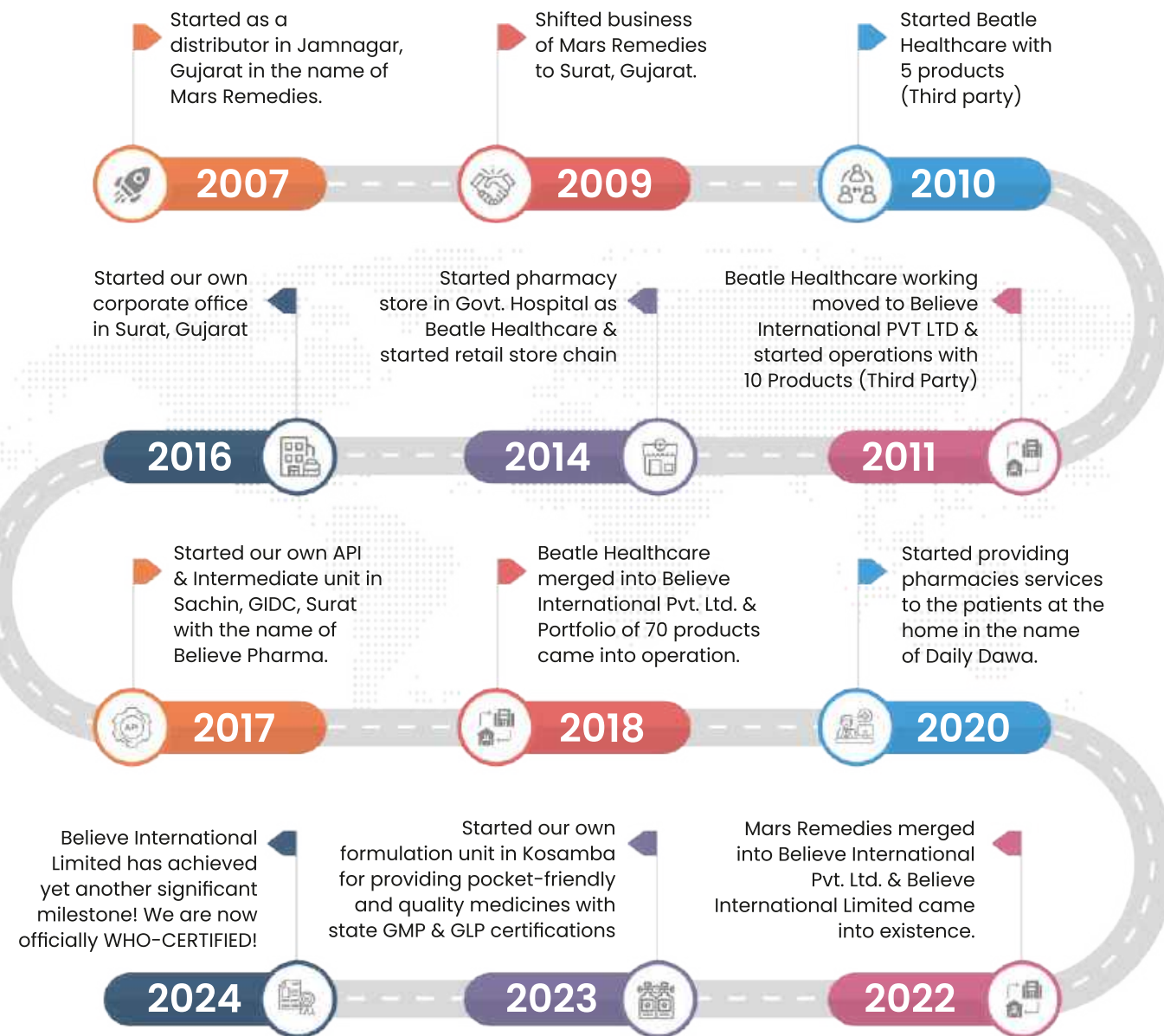


### RETAIL CHAIN PHARMACY SUPPLY

We have tied-up in Retail chain system with Government Organizations, Private Hospitals, Trust Operated Hospitals, individual doctors and Healthcare Corporate.



## BELIEVE JOURNEY



And the Journey Continuous...

## OUR CORE VALUE



### 1. INTEGRITY:

We uphold the highest ethical standards in all our interactions and decisions, placing integrity at the core of our business practices.



### 2. INNOVATION:

We foster a culture of innovation and embrace new ideas, technologies & approaches to drive scientific advancements and improve patient care.



### 3. COLLABORATION:

We believe in the power of collaboration and actively seek partnerships with healthcare professionals, researchers and other stakeholders to foster collective success.



### 4. TEAMWORK:

Believe International limit at all times act in the interest of enhancing their career progress. Believe that success depends on the skills of its people & we are committed to develop the wide range of capabilities that our global workforce offers.



### 5. QUALITY:

We are committed to deliver products of the highest quality, adhering to rigorous standards and regulations to ensure safety and efficacy.



### 6. CENTRICITY:

We prioritize the needs and well-being of human life in everything we do, ensuring our products are safe, effective and accessible to those who need them.



## FORMULATION

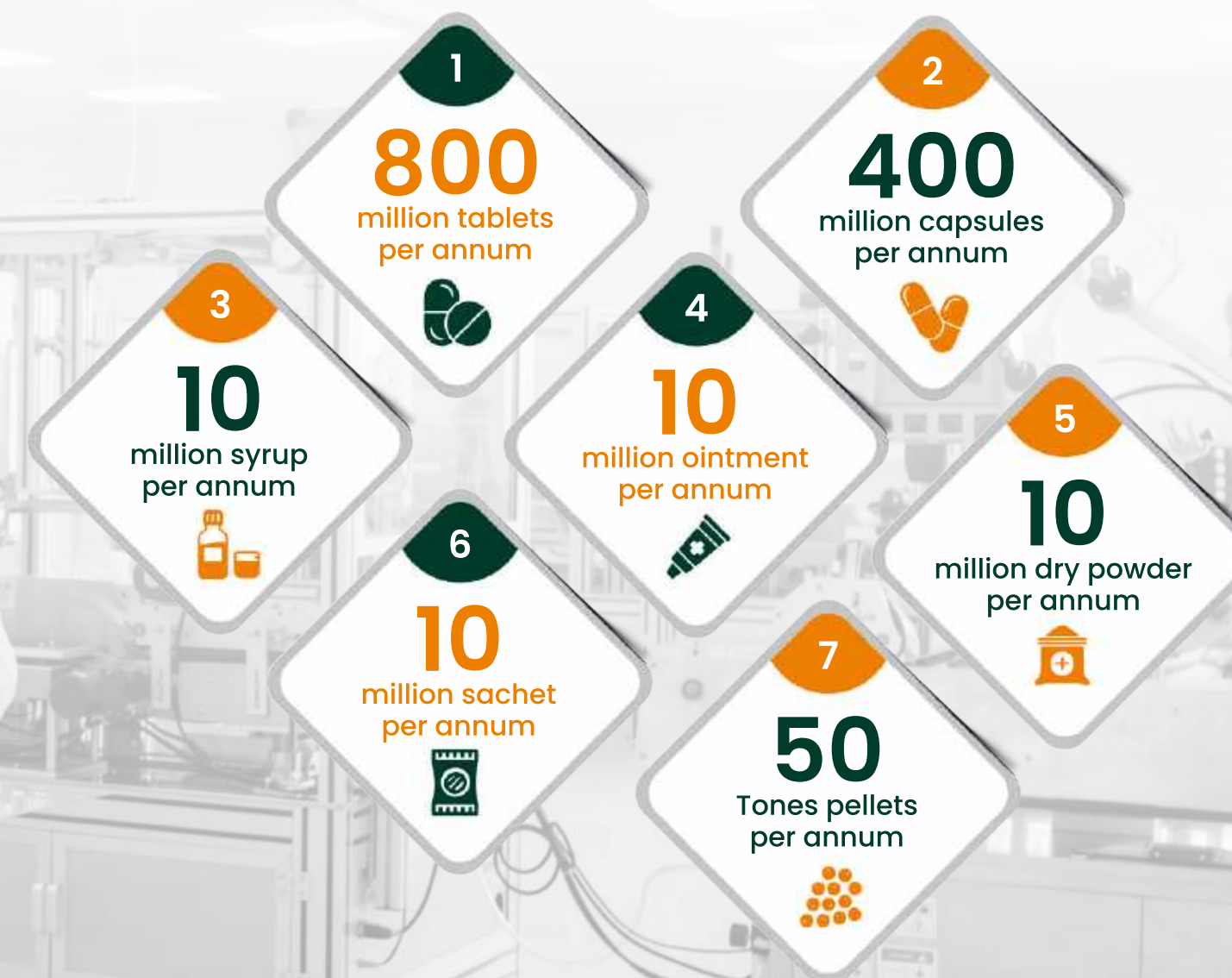
Believe is an Innovative and Technology-driven pharmaceutical company that specializes in R&D and F&D, manufacturing and marketing of generic and branded formulations. We have established our company as a pioneer in the pharmaceutical industry by offering a wide range of Tablets, Capsules, Oral Liquid, Ointment, Dry Syrup, Sachet, Oral Solid dosages and Pellets from all types of general products.

We fulfill quality control and assurance of products to be manufactured in our plant & provide best quality products without any compromise & provide world class manufacturing facility in India & world wide to become a global healthcare organization driven by people, research and technology.

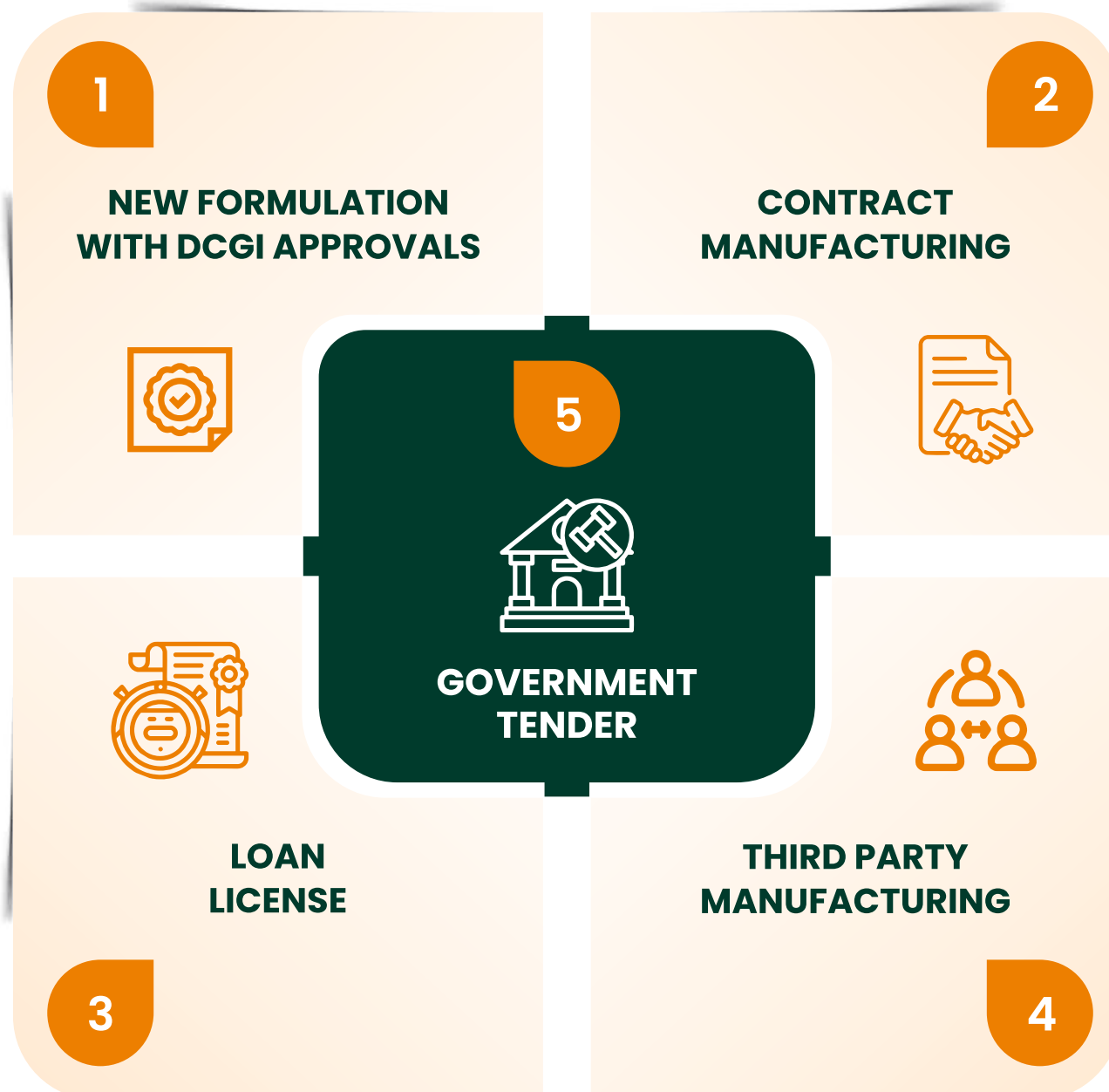


## FORMULATION CAPACITY

**One stop solution for manufacturing services in 7 dosages forms**



## WHAT WE PROVIDE



## API & INTERMEDIATES

Believe Pharma aims at becoming the first choice of this expanding market through better products, ensuring quality and timely delivery. From continuous manufacturing utilizing expert flow chemistry and enhanced purification methods, to identify, developing and obtaining the best solid state API crystalline form, we support customers with full analytical, validation and regulatory services at all phases of development.

Facility is located  
at **SACHIN**, GIDC

We have **35 kl/day**  
production capacity  
in volume

Facility is fully licenced  
as per **Indian facility** act



**FDCA & GMP**  
approved facility

We have **1KL to 5KL**  
capacity of total 13 reactors

We have **FDCA approved**  
quality control lab and  
powder processing area





## R & D AND F & D CENTRE

### RESEARCH & DEVELOPMENT

R & D team analyze market trends, user requirements & emerging technologies to identify potential needs & opportunities for new API development. This involves understanding the pain point of developers and business, as well as exploring areas where APIs can unlock new possibilities.

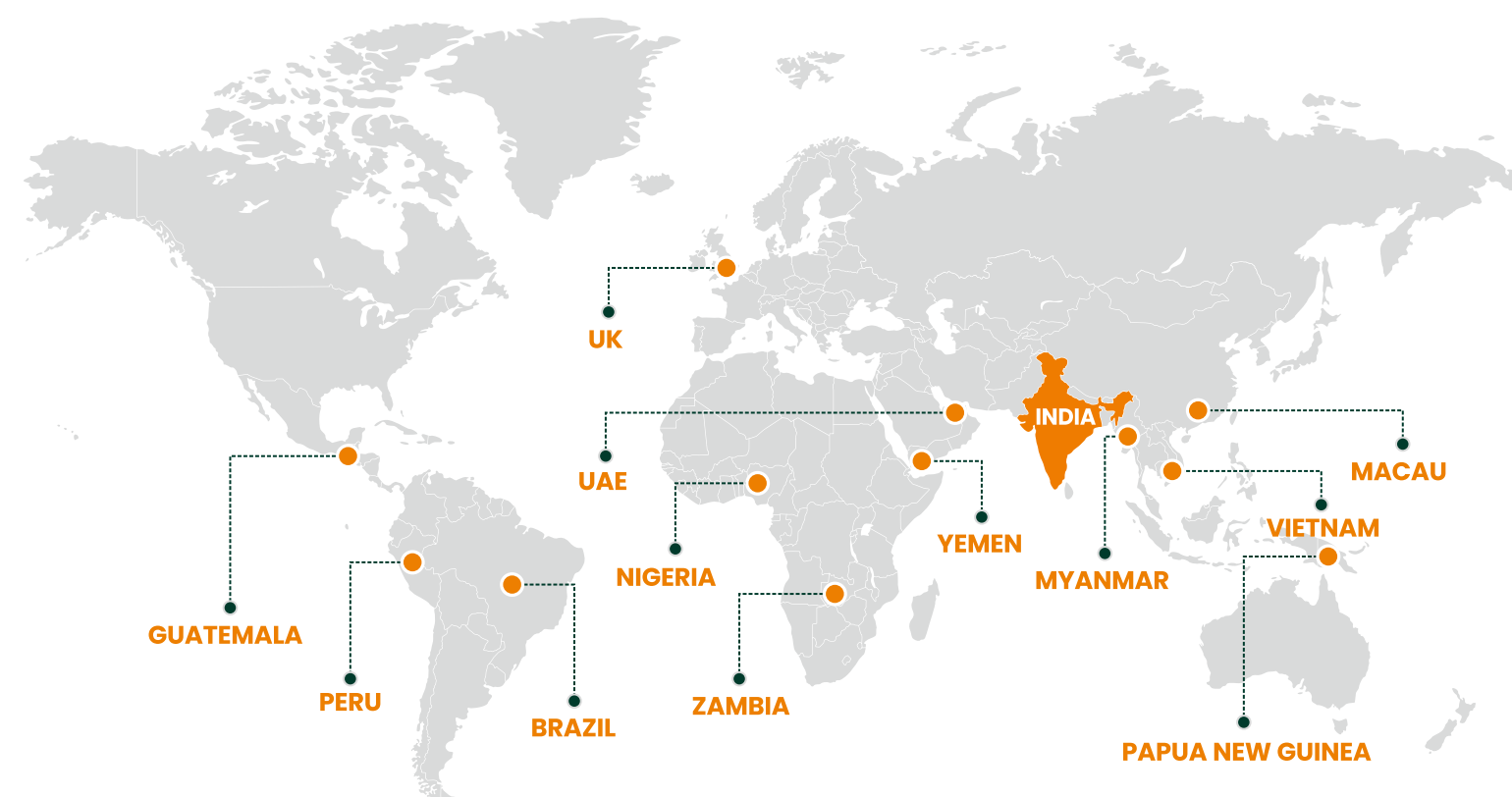


### FORMULATION & DEVELOPMENT

- Formulation of generic drugs to achieve bioequivalence.
- Modification of existing drug, formulation to improve their efficacy & safety.
- Development of sustained-release, extended-release, or controlled-release drug formulations.
- Reformulation of poorly soluble or poorly absorbed drugs to improve their bioavailability.
- Development of combination drug products.

## GLOBAL PRESENCE

Believe has a focused go-to market strategy which has a mix of front-end presence, partnership presence and distributor model to target the different market dynamics through its diversified product portfolio. With innovation products in the pipeline and differentiated portfolio of biologics, Believe aims to continue to grow in the row market with deeper market penetration and calibrated strategy.



### WORLD COUNTRIES

MACAU | UK | ZAMBIA | NIGERIA | MYANMAR | UAE | TANZANIA | GUATEMALA  
| PERU | BRAZIL | PAPUA NEW GUINEA | YEMEN | VIETNAM



## WHY CHOOSE BELIEVE?



## WHAT SETS BELIEVE APART



### RESEARCH EXCELLENCE

We invest heavily in research and development, leveraging cutting-edge technologies and scientific expertise to bring forth innovative solutions.



### GLOBAL REACH

With a strong global presence, we strive to make our products available to patients worldwide, addressing healthcare challenges on a global scale.



### COMMITMENT TO SUSTAINABILITY

We are dedicated to conduct our business in an environmentally responsible and sustainable manner, minimizing our impact on the planet.



### CUSTOMER SUPPORT

We go beyond developing medicines by providing comprehensive support programs to assist patients in accessing and using our products effectively.



### CONTINUOUS IMPROVEMENT

We continually evaluate and enhance our processes, systems and practices to ensure that we remain at the forefront of the pharmaceutical industry.

## OUR CORPORATE SOCIAL RESPONSIBILITIES

Our company is dedicated to not only providing high-quality pharmaceutical products but also to make a positive impact on society. We understand that our success is directly linked to the well-being of the communities we serve and we are committed to play a responsible role in creating a sustainable future. We believe that corporate social Responsibility (CSR) is an integral part of our business strategy and operations. Our CSR policy outlines the key area where we focus our efforts and investment to create a positive impact on society.



### HEALTH AND WELLNESS

We are committed to promote health and wellness among all communities through our products and services. We aim to provide affordable and accessible healthcare solutions to people at all stage of life.



### ENVIRONMENTAL SUSTAINABILITY

We recognize that our operations have a direct impact on the environment. We are dedicated to reduce our carbon footprint and promote environmentally responsible practices throughout our supply chain.



### EMPLOYEE WELL-BEING

We believe that our employees are our most valuable asset and we are committed to promote their health, safety and well-being. We provide our employees with safe working conditions, fair compensation and opportunities for personal and professional growth.



### COMMUNITY DEVELOPMENT

We believe in giving back to the communities where we operate. We support local initiatives that contribute to the well-being of the communities and aim to build strong, long-lasting relationships.



### ETHICAL BUSINESS PRACTICES

We adhere to the highest ethical standards in all our business dealings. We believe in honesty, transparency and accountability in all our interactions with our stakeholders. We are committed to regularly reviewing and updating our CSR policy to ensure that we are aligning with the latest industry standards and best practices. Our goal is to create a positive impact on society and to be responsible and sustainable business.

