



**Lifesurge**   
HEALTHCARE  
PVT. LTD.



**LIFESURGE CALL HEALTH FOR ALL.**

We believe that the health is the key to prosperity in every human life and care is the backbone of health, so we exist to put care in the healthcare.

Lifesurge was incepted to focus on transformative innovation to deliver smarter, more personalized care for patients and providers. We exist to span the spectrum of healthcare, which reflects in the solutions we create and cater, ranging from Infusion Therapy, Transfusion Therapy, Urology, Anaesthesia and Respiratory care. We provide the answers with precision, delivering breakthrough technologies to prevent, diagnose and treat health needs. Adapting quickly to changes in the world around us, harnessing leading-edge science and technology to deliver the best possible solutions for some of the world's most important health challenges forms our everyday routine.

The entire development process - from the initial idea to being used in the patient's home or as part of the daily hospital routine - we identify possible risks of therapies in accordance with medical specialists and patients. We evaluate them and develop prevention strategies in order to increase treatment quality and safety. With structured risk management, we reduce risks and improve safety in the healthcare field.



# CONTENTS

- **INFUSION THERAPY**
- **UROLOGY**
- **ANAESTHESIA**
- **GASTROLOGY**
- **SURGERY**
- **MISCELLANEOUS**

## Disposable Syringes

- High Clarity Transparent barrel Molded By Using Premium Quality Medical Grade Polypropylene.
- Thermoplastic Elastomer (TPE) Gasket For Smooth Movement Of The Plunger.
- Non-Toxic, Non pyrogen, ETO Sterile.
- Size Range : 1ml / 2ml / 3ml / 5ml / 10ml / 20ml / 50ml

### Option Available

- With Luer Slip / With Luer Lock
- With Needle / Without Needle

**PACKAGING: Blister Pack / Ribbon Pack**



## Hypodermic Needle

- Pain less Extra Thin Wall Bevel Silicone Coated Triangle Cut Needle.
- Made From High Quality SS304 Stainless Steel.
- With Colour Code As Per ISO: 6009 Standard For Easy Identification.
- Assembled and Packaged on totally automated machine.
- Non-Toxic, Non pyrogen, ETO Sterile.

### Option Available

Size Range : 16G/ 18G/ 19G/ 20G/ 21G/ 22G/ 23G/ 24G/ 25G/ 26G

**PACKAGING : Blister Pack**



## Infusion Set

- Soft and Kink Free Medical Grade PVC Tube.
- Sharp Spike With PVC Drip Chamber.
- Roller Clamp For Controlling Fluid Flow.
- Injection Site For Extra Medication.
- Siliconized Needle.
- Non-Toxic, Non pyrogen, ETO Sterile.

### Option Available

- Vented / Non Vented
- With Tube Latex / With Bulb Latex
- With Luer Lock
- With Y Connection and Luer Lock
- With Needle / Without Needle
- With 0.2 micron Bacterial Filter ( Paclitaxel )

**PACKAGING: HM Pouch / Paper pack / Ribbon Pack**



## Blood Transfusion Set

- Soft and Kink Free Medical Grade PVC Tube.
- Sharp Spike With PVC Drip Chamber.
- Roller Clamp For Controlling Fluid Flow.
- Siliconized Needle.
- Non-Toxic, Non pyrogen, ETO Sterile.

### Option Available

- Vented / Non Vented
- Single Moulded / Double Moulded Chamber
- With Tube Latex / With Bulb Latex
- With Y Connection and Luer Lock
- With Needle / Without Needle

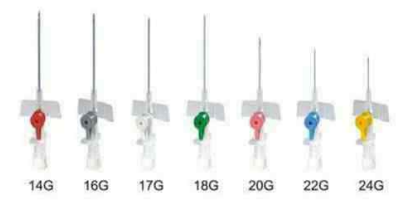
**PACKAGING: HM Pouch / Paper pack / Ribbon Pack**



## IV Cannula

- Thin-Walled PTFE Teflon Catheter.
- Luer Lock With And Without Injection Port & Wings.
- Standard Color code for easy identification.

Size	Colour	20G	22G
14G	Orange	22G	Blue
16G	Grey	24G	Yellow
18G	Green	26G	Violet



**PACKAGING : Blister Pack**

## Measured Volume / Burette Set

- Pediatric Volumetric Set With 60 drops/ml.
- Available In 110 ml & 150 ml Chamber with and Without Air vent.
- Non-Toxic, Non pyrogen, ETO Sterile.

### Option Available

- With Tube Latex / With Bulb Latex
- With Luer Lock
- With Y Connection And Luer Lock
- With Needle / Without Needle



**PACKAGING: HM Pouch / Paper pack / Ribbon Pack**

## Scalp Vein Set

- Pain less Extra Thin Wall Siliconized Needle.
- Kink Free Tubing With Soft Butterfly Wings For Easy Handling.
- Non-Toxic, Non pyrogen, ETO Sterile.
- **Size available: 20G/ 21G/ 22G/ 23G/ 24G/ 25G.**

### Option Available

- With Luer Slip / With Luer Lock



**PACKAGING: HM Pouch / Blister Pack**

## Extension Line With Three Way Stop Cock

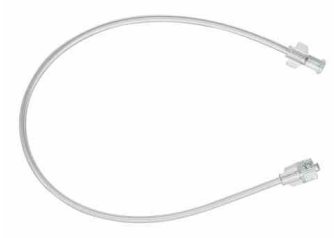
- Kink Free Tube.
- Three Way Stop Cock At One End & Male Luer Lock Connector On Other End.
- **Size Range : 10cm, 25cm, 50cm, 100cm, 150cm, 200cm.**



**PACKAGING: HM pouch / PAPER Pack**

## Pressure Monitoring Line

- Kink Free Tube.
- With Male And Female Connectors.
- **Size Range : 10cm, 25cm, 50cm, 100cm, 150cm, 200cm.**



**PACKAGING:** HM pouch / PAPER Pack

## Iv Flow Regulator With Extension Set

- Precise Flow Rate Control Of Iv Fluid With Range of 5 to 250 ml/hr.
- Used To Regulate The Flow Of Iv Fluid.
- Male Luer Lock At One End And Female Luer Lock Of Second End.
- Standard Length : 60 cm.



**PACKAGING:** HM pouch / PAPER pack





## Urine Collection Bags

- Transparent Medical Grade PVC Urine Bag Cloth.
- Soft & Kink Free Medical Grade PVC Tubing.
- Bags Graduated in ml. Capacity approx. 2000 ml.
- All Urine Collection Bags Provided With Non Return Valve.
- Customized Urine Bag Capacity Available On Request.
- **Variant : Top Outlet / Bottom Outlet.**



## Urine Collecting Bag With Measured Volume Urometer

- Urine Bag Graduated In ml with 250 ml Capacity Of Measured Volume Meter For Accurate Measurement of Urine Output.
- Urine Bag Capacity Approx 2000 ml With Moulded Hanger With Bottom Outlet.
- Transparent Medical Grade PVC Urine Bag Cloth.



## Urethral Catheter

- Made From Medical Grade Thermo-Sensitive PVC Material.
- Non-Irritant To Delicate Mucous Membranes Of Urethra.
- Perfectly Finished Closed Distal End For Smooth & Painless Insertion.
- Provided With Two Side Eyes For Efficient Drainage.
- Also Provided With Funnel-Shaped Color- Coded Connector At The Proximal- End.
- **SIZE : 8FG, 10FG, 12FG, 14FG, 16FG, 18FG, 20FG, 22FG, & 24FG.**



## Nelaton Catheter

- Designed For Short Term Bladder Catheterization.
- Made From Medical Grade Thermo-Sensitive PVC Material.
- Non-Irritant To Delicate Mucous Membranes Of Urethra.
- Perfectly Finished Closed Distal End For Smooth & Painless Insertion.
- Provided With Two Side Eyes For Efficient Drainage.
- Also Provided With Funnel- Shaped Color- Coded Connector At The Proximal-End.
- **SIZE : 8FG, 10FG, 12FG, 14FG, 16FG, 18FG, 20FG, 22FG & 24FG.**



## Male External Catheter

- This External Male Condom Catheter Is Specially Designed For Urine Incontinence For Day And Night Use To The Male Patients.
- External Male Condom Catheters Designed To Keep Men Dry And Comfortable Eliminating The Requirement Of Absorbents.
- The Catheters Are Placed Over The Penis And Connected To A Collection Device, Usually A Drainage Bag Attached To The Leg Or Bedside.



## Foley Balloon Catheter

- Smooth Tapered Rounded Tip Of Foley Balloon Catheter Facilitates Easy Introducing Into The Urethral.
- Made From Latex Rubbers, And Are Silicon Coated.
- The Symmetrical Balloon Expands Equally In All Directions To Perform its Function of Retaining Surface Bladder Efficiently.
- The Smooth Outer Surface Is Specially Treated With Medical Grade Silicone Fluid To Facilitate Easy Passage Through Urethral.
- Colour- Coded Sleeves Are Useful For Easy And Rapid Size Identification.
- **SIZE : 8FG, 10FG, 12FG, 14FG, 16FG, 18FG, 20FG, 22FG & 24FG.**



**Option Available :** 100% Silicon Catheter



## Twin Bore Nasal Oxygen Set

- Made From Soft, Non-Toxic PVC Hence, Non-Irritating Even in Long Term Use.
- Star Lumen Tube Ensures the Supply Of Oxygen Even If, The Tube is Accidentally Kinked.
- Smoothly Finished & Adjustable Nasal Tips To Maximize The Comfort.
- Soft Funnel- Shaped Connector Facilitates Easy Connection to The Oxygen Source.
- **SIZE : ADULT/ CHILD / NEONATAL**



## Oxygen Mask

- Clear And Soft Mask With Adjustable Strip And Integrated Nose Clip.
- Molded face mask with adjustable elastic strap for proper positioning of oxygen mask on the mouth and nasal area.
- Provide with 2-meter-long star lumen tube to ensure continuous flow of oxygen.
- Proximal-end fitted with soft funnel shaped connector to ease connection to the oxygen source.
- **SIZE : ADULT/ CHILD**
- **ALSO AVAILABLE NON – BREATHING MASK.**



## Nebulizer Mask

- Consist Of Nebulizer Mask With Adjustable Elastic Strip & Integrated Nose Clip, Nebulizer Chamber.
- Made from unique transparent non- toxic material.
- Nebulizer chamber with a capacity of 7cc.
- The connecting tube has internal serrations (Star Lumen).
- **SIZE : ADULT/ CHILD**



## Multi Flow Venturi Mask

- Clear And Soft Mask With Adjustable Strip And Integrated Nose Clip.
- Two- Color coded diluters for seven concentrations.
- Six- Color coded diluters for six concentrations: 24%, 28%, 31%, 35%, 40%, &50%.
- **SIZE : ADULT/ CHILD**





## BVF - HME Filter

- Bacterial Viral Filter – Heat Exchange Maintainers Filter.
- Use In To The Mechanical Ventilated Patients.
- HMEF is Humidification System With Gas Monitoring Port.
- Moisture Output : 32 mg H<sub>2</sub>O/L.
- Filtration Efficiency : 99.99%.
- Tidal Volume Range : 150-1500 mili leter.
- **SIZE : ADULT/ CHILD**



## Endotracheal Tube

### Endotracheal Tube Plain

- Pilot balloon with integral one way valve.
- Size of the tube clearly marked on the tube.
- Cuff is optimally designed for routine intubation.
- Murphy eye, high volume, low pressure cuff, oral/nasal.
- **SIZE : 2.0mm to 7.00mm**



### Endotracheal Tube Cuffed

- Non- Return Valve with indicator to facilitate the cuff inflation and deflation.
- Thin, smooth cuff inflates symmetrically eliminating any risk of herniation.
- Terminal end is suitable for 15mm connector.
- **SIZE: 3.0mm to 10.0mm**



## Also Available Products Of Anaesthesia.

- Catheter mount
- Guedel airway
- Respiratory exerciser ( 3 ball spirometer )
- Plain ventilator circuit
- Single water trap ventilator circuit
- Double water trap ventilator circuit
- T-recovery kit
- Nebulizer t pc kit
- Bain circuit
- Ambu bag (resuscitator bag)

## Ryle's Tube

- Smooth outer surface to reduce chances of tissue irritation.
- Tube With Radio-Opaque Line.
- Provision of four lateral eyes for efficient aspiration.
- Provided with soft tapered connector at the proximal- end to fit easily with standard accessories.
- Length – 105cm.
- **SIZE : 6FG, 8FG, 10FG, 12FG, 14FG, 16FG, 18FG, 20FG, 22FG**



## Infant Feeding Tube

- Made from implantation-tested PVC, non irritant to delicate mucous membranes.
- Super smooth coned tip having two lateral eyes at distal end.
- Color coded female luer mount provided for safe feeding with syringe or funnel.
- A radio opaque strip co-extruded as an integral part of the catheters wall.
- Length – 52cm.
- **SIZE : 5FG, 6FG, 7FG, 7.5FG, 8FG, 9FG, 10FG.**



## Chest Drainage Catheter

- Catheter manufactured from medical grade PVC is snugly fitted over the trocar.
- The device is specially designed for rapid non operative pleural and chest drainage for the relief of chest conditions such as tensions pneumothorax.
- Blunt smooth tip.
- Large smooth drainage eyes for efficient drainage.
- Markings provided at 2 cm to 20 cm from the distal tip assist to ascertain the depth of penetration.
- Proximal- end is fitted with tapered connector for easy connection to drainage bottle.
- **SIZE : 8, 10, 12, 14, 16, 18, 20, 22, 24, 28, 32, 36, 40.**



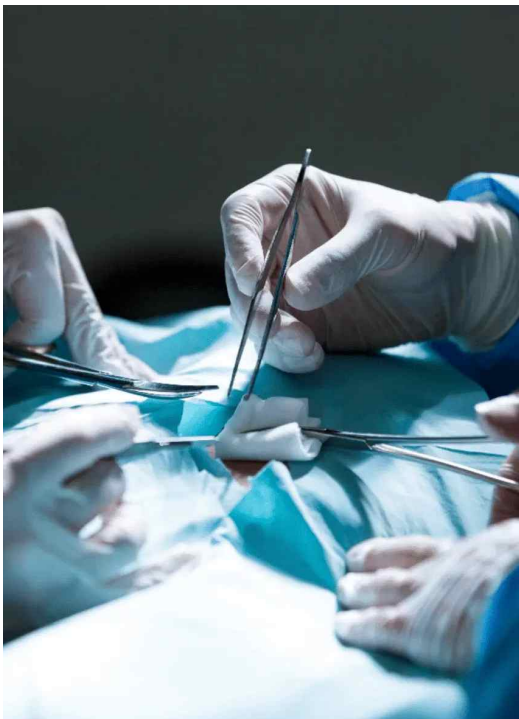
## Closed Wound Suction Kit

- Graduated bellow with connector.
- Curved Trocar With Catheter.
- Reservoir is designed especially for close wound drainage under low / negative pressure post- operatively with the option to use one catheter simultaneously.
- Bellow container capacity : 400ml and 800ml.
- **Size : 10FG, 12FG, 14FG, 16FG, 18FG.**



## Yankaur Suction Set

- Yankaur handle is open with four lateral eyes at distal end.
- Suitable for pre operative removal of secretion of body fluid.
- Proximal end is fitted with funnel connector which can be fitted with any type of suction apparatus.
- Universal connector at both the ends.



## Infant Mucus Extractor

- The Infant Mucus Extractor is especially designed for aspiration of mucus in the newly born babies to ensure trouble – free respiration.
- Our Infant Mucus Extractor is clear, transparent and has low friction surface.
- Transparent graduated chamber allows measurement and visual examination of the aspirate.
- Funnel shaped adapter at the proximal- end of suction tube is to ensure simple and secured connection.



## Umbilical Cord Clamp

- The umbilical cord clamp is a medical device used to hold the cord in place when the cut(surgery) is made, and the clamp may stay on for several days while the remaining cord attached to the baby dries.
- Designed for clamping the umbilical cord immediately after the birth.
- Protection against accidental re-opening.
- Appropriate angle for easy movement for clamping.
- Provided with grooves all along the length.
- Very safe for clinicians and patients because clipping surfaces are safely adjourned in notches to eliminate risk of injury.



## Blood Lancet

- Sterile, tri-bevel, an ultra-thin needle with high quality for perfect prick
- Small, lightweight, sturdy, portable, with single-use, and disposable safety lancet
- Anti-slip body with easily removable twists and pull-off safety cap
- Penetrate with precise depth which minimises pain and gives error-free prick
- Sophisticated design, standard fit for all lancing devices



[www.lifesurgehealthcare.com](http://www.lifesurgehealthcare.com)

REG. OFFICE | MFG. UNIT

**Lifesurge Healthcare Pvt. Ltd.**

Plot Survey No. 272, Rajpur- Katpur Road, Rajpur  
Dist- Patan, Gujarat- 384265, INDIA.



**+9187582 20920**



info@lifesurgehealthcare.com  
export@lifesurgehealthcare.com  
sales@lifesurgehealthcare.com

**ISO 13485:2016 CERTIFIED COMPANY**  
**CE CERTIFIED COMPANY**



To provide solutions & products that are effective. Our vision pushes us to develop high quality solutions.



To improve the quality of life & the quality of our work with our great products and solutions.