



COMPASSIONATE CANCER CARE



RMPL PHARMA LLP.



RMPL PHARMA LLP.

RMPL PHARMA LLP. is a part of ROYAL group of companies whose inception dates back to 1944. Our company which was incorporated in 2005, is one of the most reputed and leading merchant exporters in india of an extensive range of pharmaceuticals (mainly Oncology and other specialized products) to African, Gulf, European, & South East Asian countries. We are also engaged in wholesale distribution throughout india of specialized pharmaceuticals (mainly Oncology products) manufactured by reputed Indian & Multinational companies.

The Pharmaceutical range exported and traded by us includes products of the highest international quality manufactured by various Multinational companies and the most highly reputed Indian pharmaceutical companies. All our products are genuine and preserved in proper storage conditions as recommended by the manufacturers. We offer the most competitive prices for all our products. Our company policy is to provide our best service to all our customers at all times. We maintain the highest standards of business ethics and financial discipline.

Since our inception we have persistently endeavored to progressively improve the quality of service we provide to our customers, to increase our customer base, and to expand our range of pharmaceutical products. Our relentless efforts have helped us to expand our business in terms of geographical territory, customer base, and product range with resultant progressive growth in our sales turnover, and more importantly we have achieved excellent market reputation and an immaculate track record of very high business ethics and financial discipline.

ADRIADOX

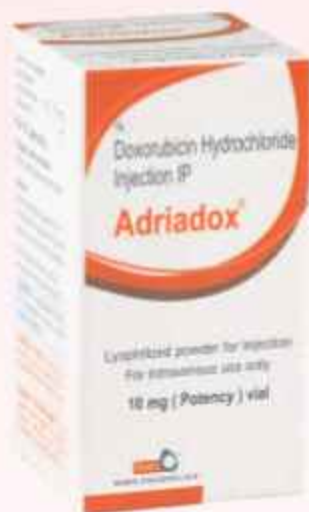
Doxorubicin HCl Injection 10mg/50mg



Indications

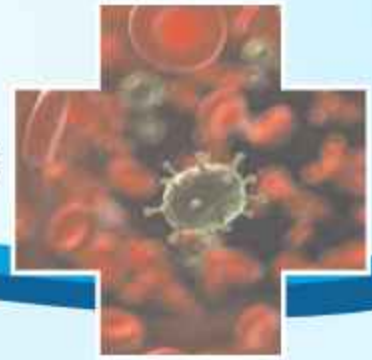
Used successfully to produce regression in disseminated neoplastic conditions such as -

- Carcinoma of the Cervix, Testis, Breast, Ovary and Lung.
- Acute Lymphatic Leukemia and Acute Myeloid Leukemia.
- Hodgkin's and Non-Hodgkin's Lymphoma.
- Soft tissue and Osteogenic Sarcoma.



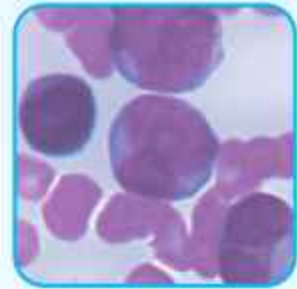
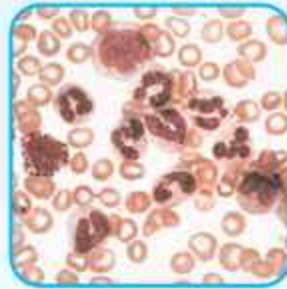
ARACYT

Cytarabine Injection 100mg/500mg/1000mg



Indications

- For remission induction in Acute Non Lymphocytic Leukemia of both adults and children.
- Acute Myelocytic Leukemia.
- Blast phase of Chronic Myelocytic Leukemia.
- Non Hodgkin's Lymphoma in adults and children.
- Intrathecal administration of Cytarabine injection is indicated in the prophylaxis and treatment of Meningeal Leukemia.
- Preservative Free.
- Available for intrathecal usage.
- Higher dose Cytarabine is more effective in myeloid malignancies, Particularly in high risk patients.¹



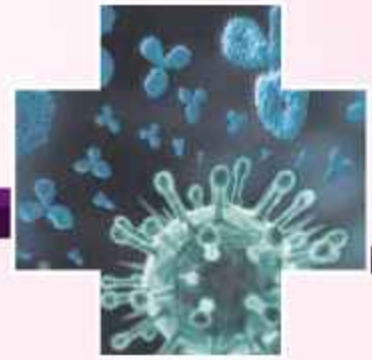
Preservative
Free



Reference:- 1. Aral Y, et al. Blood. 2015 Jun 1; pii: blood-2015-04-642652.

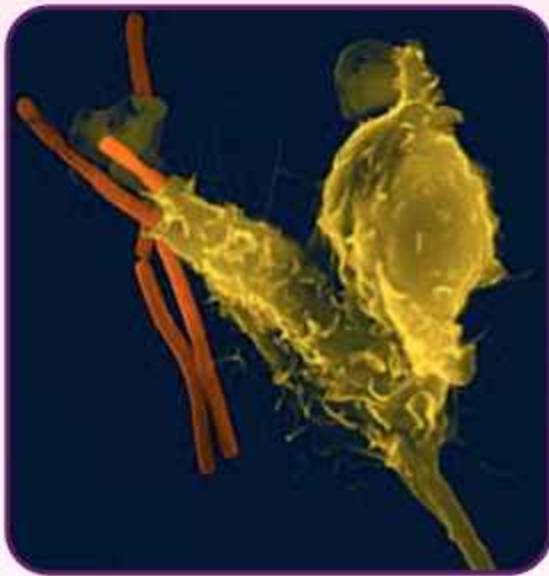
α CAL

Alfacalcidol Injection 2mcg/ml



Indications

Alfacalcidol has significant effects on the immune system, including regulatory T cells. It is considered to be a more useful form of vitamin D supplementation, mostly due to much longer half-life and lower kidney load.



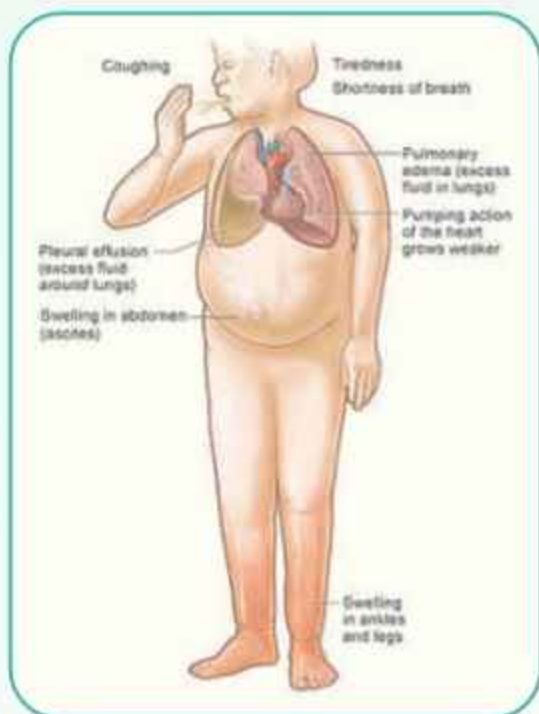
APREZINE

Hydralazine Injection 20mg/ Hydralazine Tablets 25mg



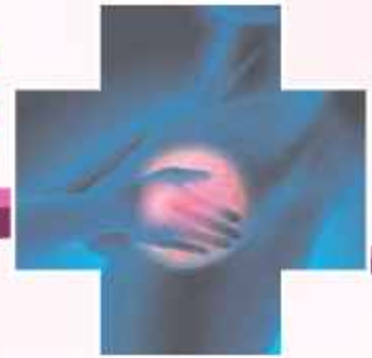
Indications

Medication used to treat high blood pressure and heart failure. Chronic heart failure (CHF), congestive cardiac failure (CCF).



ARIMIZOLE

Anastrozole Tablets 1mg



Indications

- For adjuvant treatment of postmenopausal women with hormone receptor positive early **Breast Cancer**.
- For the first-line treatment of postmenopausal women with hormone receptor positive or hormone receptor unknown **locally Advanced** or **Metastatic Breast Cancer**.
- For the treatment of **Advanced Breast Cancer** in postmenopausal women with **disease progression following tamoxifen therapy**.

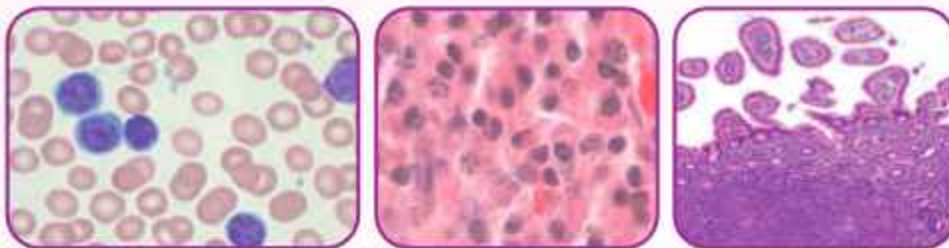


BENMUSTIN

Bendamustine 100mg injection

Indications

Bendamustine is a chemotherapy medication used in the treatment of chronic lymphocytic leukemia (CLL), multiple myeloma, and non-Hodgkin's lymphoma.



BLEOCARE

Bleomycin Injection 15 IU



Indications

- Squamous Cell Carcinoma affecting Head and Neck.
- Hodgkin's and Non-Hodgkin's Lymphoma.
- Testicular Carcinoma.



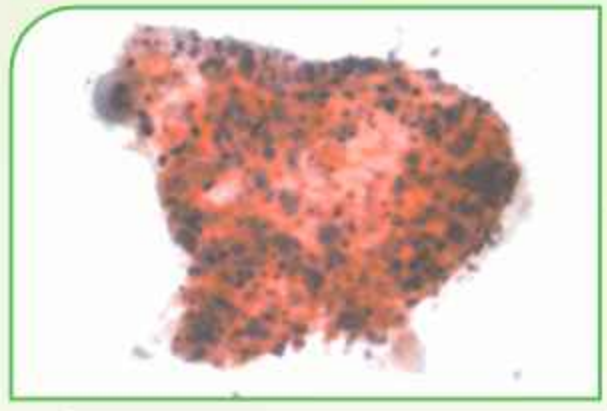
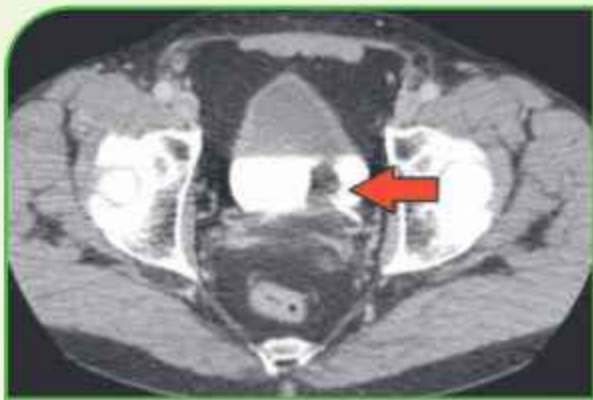
CANCYTE

Gemcitabine Injection 200mg / 1000 mg



Indications

It is a chemotherapy drug used to treat cancer of the bladder, pancreas, ovary and breast, and non-small cell lung cancer.



CANPLATIN

Cisplatin Injection 10mg / 50mg



Indications

- Metastatic Ovarian Cancer.
- Advanced Bladder Cancer.
- Metastatic Testicular Cancer.



CANZATAX

Paclitaxel Injection 30mg/100mg/260mg/300mg



Indications

Breast Carcinoma



Cervical Carcinoma



Lung Carcinoma



Ovarian Carcinoma



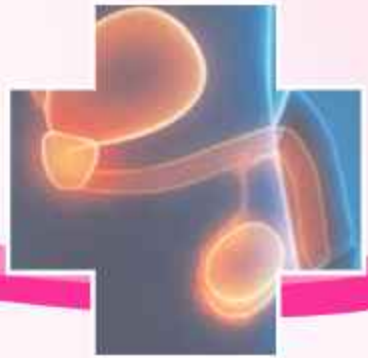
Weekly administration of Paclitaxel is highly active & well tolerated in Breast Carcinoma¹



Reference:- 1. Sparano JA, et al. N Engl J Med. 2008;358(16):1663-1671.

COSMEDAC

Dactinomycin for Injection 0.5mg



Indications

- Wilms' tumour.
- Childhood Rhabdomyosarcoma.
- Ewing's Sarcoma and Metastatic Nonseminomatous Testicular Cancer.
- Gestational Trophoblastic Neoplasia.



CARBOPIN

Carboplatin Injection 150mg/450mg



Indications

- Initial treatment of Advanced Ovarian Carcinoma.
- Secondary treatment of Advanced Ovarian Carcinoma.



CANTECAN

Irinotecan Injection 40mg/100mg

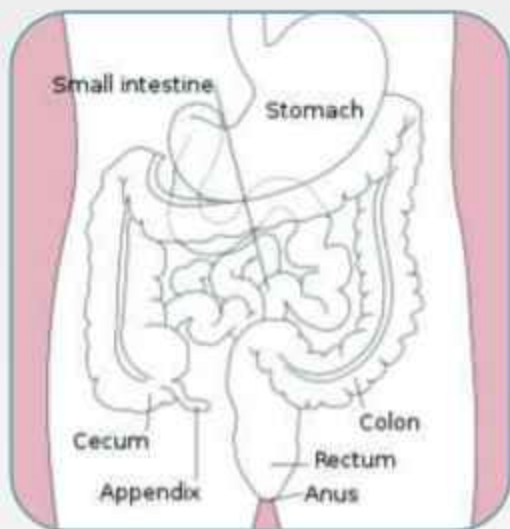


Indications

Irinotecan is a chemotherapy drug used to treat colon cancer and rectal cancer. It may also be used to treat other cancers.

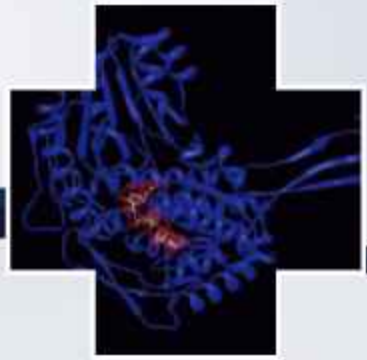
Colorectal cancer.

Synonyms Colon cancer, rectal cancer, bowel cancer.



CHRONOL

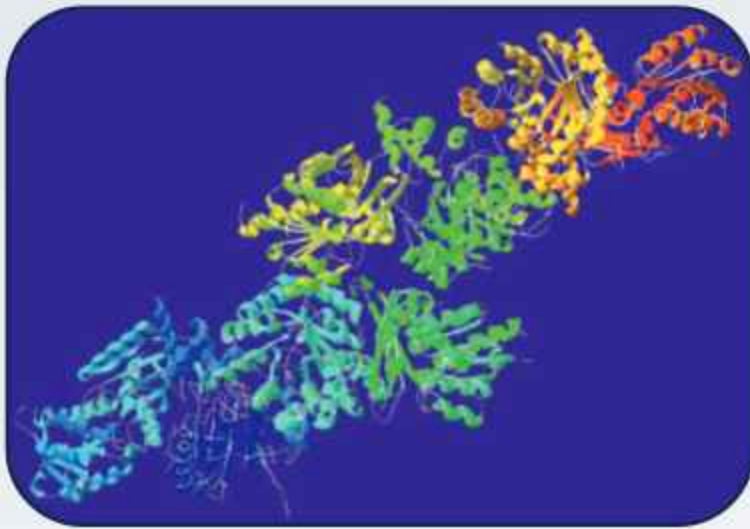
Disulfiram Tablets 500mg



Indications

Disulfiram : is a drug used to support the treatment of chronic alcoholism by producing an acute sensitivity to ethanol.

Disulfiram works by inhibiting the enzyme acetaldehyde dehydrogenase.



CARMENDAN

Levosimendan Injection 12.5 mg



Indications

Levosimendan is a calcium sensitiser used in the management of acutely decompensated congestive heart failure.

it increases the sensitivity of the heart to calcium, thus increasing cardiac contractility without a rise in intracellular calcium.

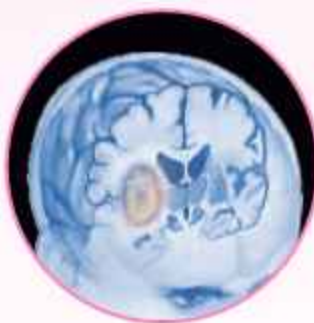


DRONIZOL

Zoledronic Acid Injection 4mg

Indications

- Hypercalcemia of Malignancy.
- Multiple Myeloma.
- Bone Metastases of Solid Tumours.



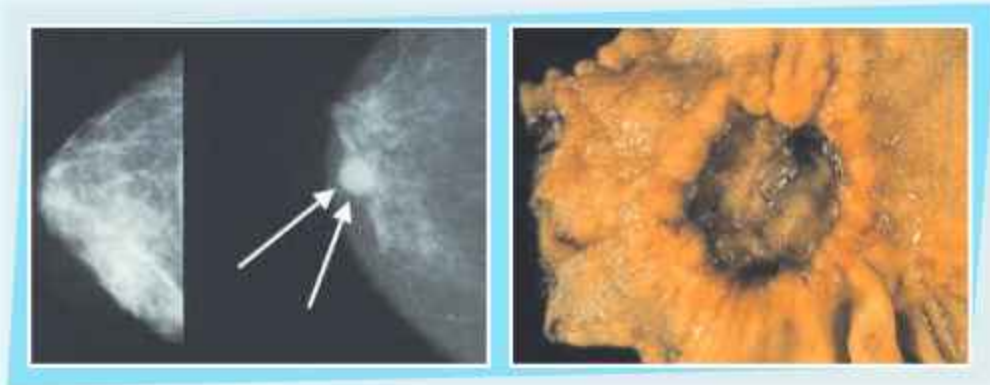
DE-SOTAX

Docetaxel injection 20mg/80mg/120mg



Indications

Docetaxel is a chemotherapy drug. It is used to treat many types of cancer including breast, prostate, stomach, head and neck, and non-small cell lung cancer.



DETIZENE

Dacarbazine for Injection 200mg



Indications

- In the treatment of Metastatic Malignant Melanoma.
- In Hodgkin's Disease as a secondary-line therapy when used in combination with other effective agents.



DEPOSILLIN LA-12

Benzathine Penicilline Injection 1200000 IU

Indications

Benzathine penicillin, is an antibiotic useful for the treatment of a number of bacterial infections. Specifically it is to treat strep throat, diphtheria, syphilis, and yaws. It is also used to prevent rheumatic fever.

- Syphilis • Rheumatic fever



ELOPLAT

Oxaliplatin for Injection 50mg/100mg



Indications

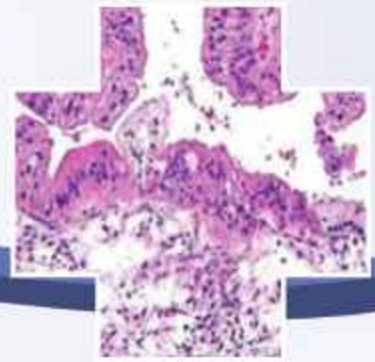
Used in combination with infusional Fluorouracil and Leucovorin Calcium

- Adjuvant treatment of **Stage III Colon Cancer** in patients who have undergone complete resection of the primary tumour.
- Treatment of **Advanced Colorectal Cancer**.



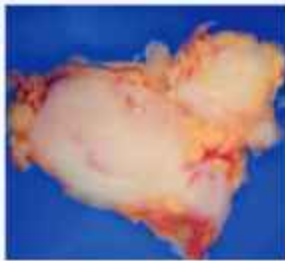
ETOPOSIDE

Etoposide 100mg injection/50mg Capsule



Indications

Etoposide is a chemotherapy medication used for the treatments of a number of types of cancer. This includes refractory testicular tumour, small lung cancer, lymphoma, leukemia, neuroblastoma, and ovarian cancer.



FEMATROZ

Letrozole Tablets 2.5mg

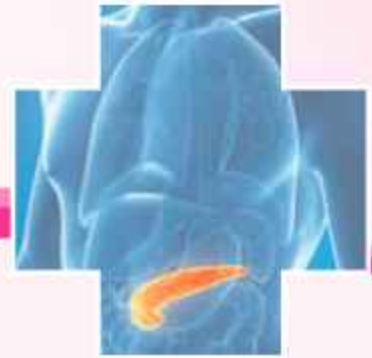
Indications

Indicated for the first line treatment of **Advanced or Metastatic Breast Cancer** (hormone receptor positive or receptor status unknown) in **postmenopausal women**.



5-FLU

Fluorouracil Injection 250mg/5ml & 500mg/10ml



Indications

- Palliative Management of Carcinoma of the Colon, Rectum, Breast, Stomach and Pancreas.



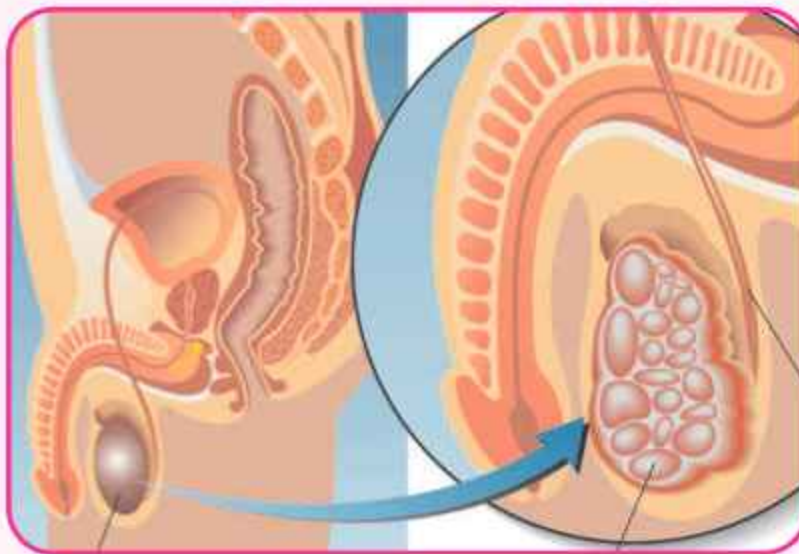
HOLOFOS

Ifosfamide Injection 1000mg/2000mg



Indications

- Indicated for use in combination with certain other approved antineoplastic agents for third-line chemotherapy of Germ Cell Testicular Cancer.
- Ifosfamide is combined with Mesna for prophylaxis of Hemorrhagic cystitis.



HYPOFOL

Propofol 200 mg



Indications

Propofol is a short-acting medication that results in a decreased level of consciousness and a lack of memory for events.

Its uses include the starting and maintenance of general anesthesia, sedation for mechanically ventilated adults, and procedural sedation.

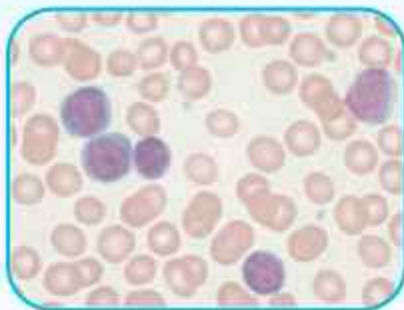


LEUKOBUCIL

Chlorambucil Tablets 2mg

Indications

Leukobucil is chemotherapy medication used to treat chronic lymphocytic leukemia (CLL), Hodgkin lymphoma, and non-Hodgkin lymphoma.



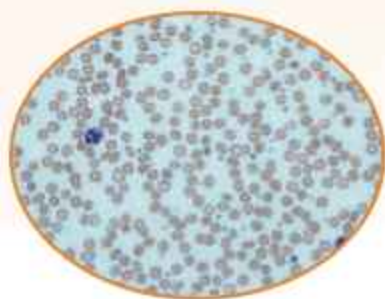
LEUCOVORIN CALCIUM

Leucovorin Calcium Injection 50mg



Indications

An active metabolite of folic acid (also called folinic acid and citrovorum factor), which does not require metabolism by dihydrofolate reductase, the molecular target of folate antagonist-type chemotherapeutic drugs.

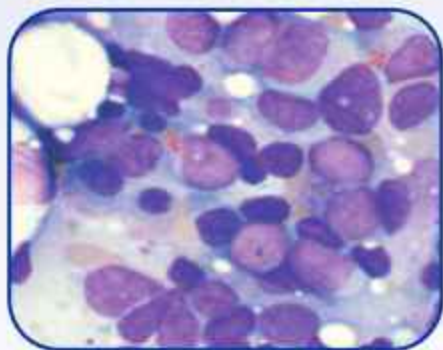


LEUKOGINASE

L-Asparaginase 10000 IU Injection

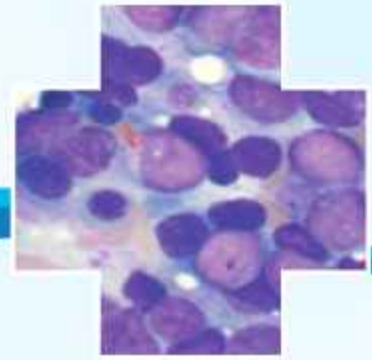
Indications

L-asparaginase is used to treat acute lymphoblastic leukemia, acute myeloid leukemia (AML), and non-Hodgkin's lymphoma.



LANVIS

Thioguanine 40mg Tablet



Indications

Thioguanine, is a medication used to treat acute myeloid leukemia (AML), acute lymphocytic leukemia, and chronic myeloid leukemia.



LOW- K

Potassium Chloride 600mg Tablet

Indications

Potassium chloride is used to cause cardiac arrest .



MELKERAN

Melphalan Tablets 2mg / Injection 50mg



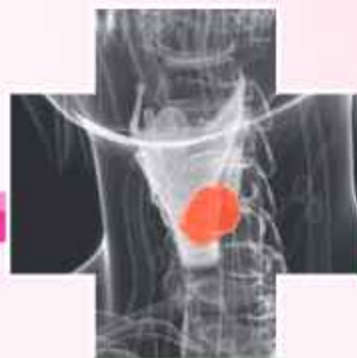
Indications

- Palliative treatment of Multiple Myeloma.
- Palliation of non-resectable Epithelial Carcinoma of the Ovary.



METHOTREX

Methotrexate Injection 50mg/500mg /1000mg and Methotrexate Tablets 2.5mg



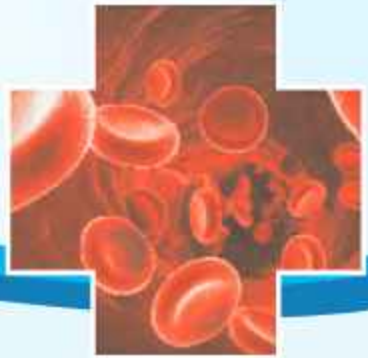
Indications

- Psoriasis.
- Rheumatoid Arthritis.
- Gestational Choriocarcinoma.
- Breast Carcinoma.
- Epidermoid Cancer of Head & Neck.
- Lung Cancer, particularly squamous cell and small cell types.
- Advanced stage Non-Hodgkin's Lymphoma.
- In Acute Lymphatic Leukemia, Methotrexate Injection is used in the prophylaxis of Meningeal Leukemia.
- In high doses, followed by Leucovorin rescue, is effective in prolonging relapse free survival in patients with nonmetastatic osteosarcoma.



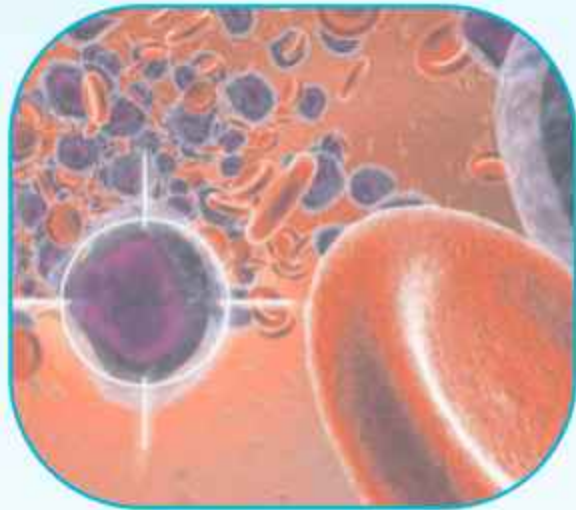
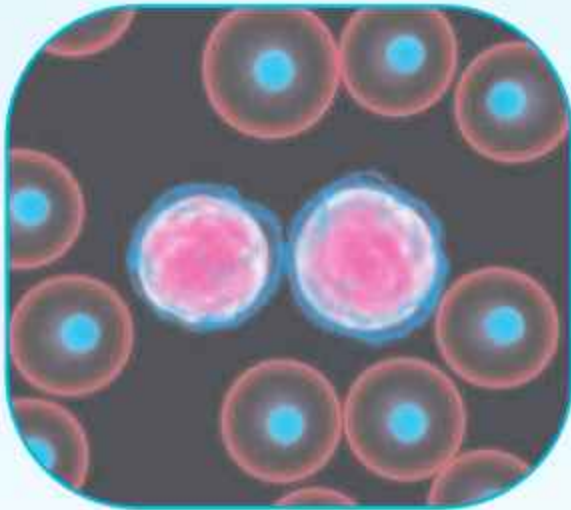
MERINETHOL

Mercaptopurine Tablets 50mg



Indications

- For the induction of remission and maintenance therapy in patients with Acute Lymphatic Leukemia.
- Acute Myelogenous Leukemia.



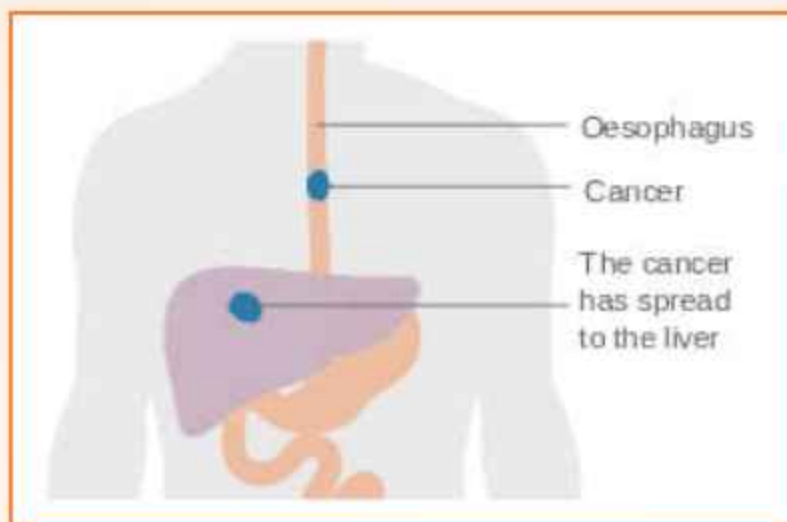
MITOMYCIN

Mitomycin Injection 10mg



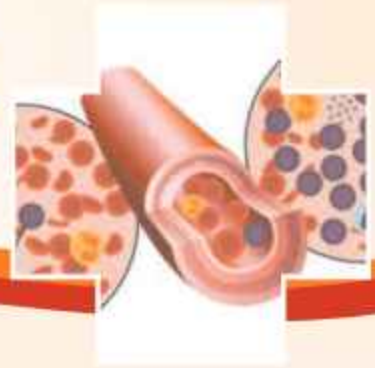
Indications

- Mitomycin is chemotherapeutic agent by virtue of its antitumour activity.
- It is given intravenously to treat upper gastro-intestinal cancers (e.g. esophageal carcinoma), anal cancers, and breast cancers, as well as by bladder instillation for superficial bladder tumours.



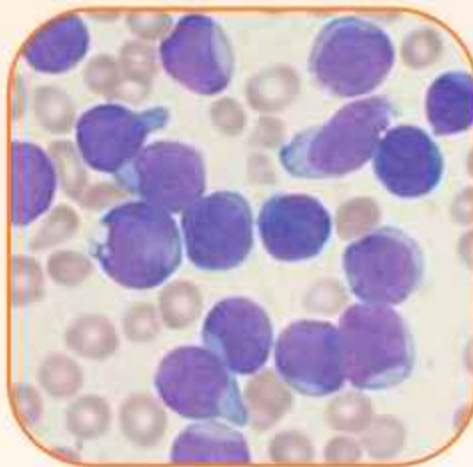
MYLOTINIB

Imatinib Tablets 400mg



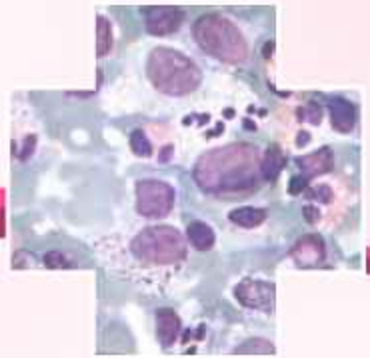
Indications

- Mylotinib is used for chronic myelogenous leukemia and acute lymphocytic leukemia.



MYOBLASTIN

Vinblastin Injection 10mg



Indications

Hodgkin's lymphoma, non-small cell lung cancer, bladder cancer, brain cancer, melanoma, and testicular cancer.



MICRISTIN

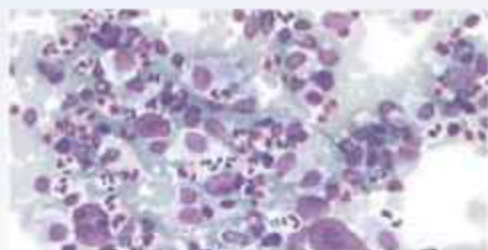
Vincristin Injection 1mg

Indications

Vincristine is used to treat a number of types of cancer. This includes acute lymphocytic leukemia, acute myeloid leukemia, Hodgkin's disease, neuroblastoma, and small cell lung cancer among others.

Hodgkin's lymphoma

Synonyms Hodgkin lymphoma, Hodgkin's disease



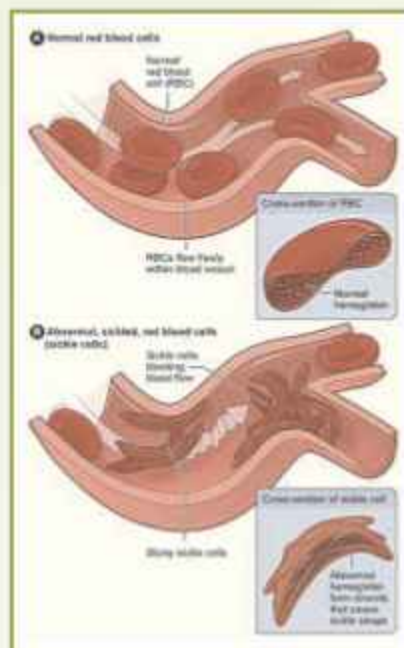
MYDREA

Hydroxyurea Capsules 500mg



Indications

Hydroxyurea is an antineoplastic (anti-cancer) agent used to treat melanoma, resistant chronic myelocytic leukemia, and recurrent, metastatic, or inoperable carcinoma of the ovary and primary squamous cell (epidermoid) carcinomas of the head and neck.



METOLAZONE

Metolazone Tablets 5mg



Indications

It is primarily used to treat congestive heart failure and high blood pressure. Metolazone indirectly decreases the amount of water reabsorbed into the bloodstream by the kidney, so that blood volume decreases and urine volume increases. This lowers blood pressure and prevents excess fluid accumulation in heart failure. Metolazone is sometimes used together with loop diuretics such as furosemide or bumetanide, but these highly effective combinations can lead to dehydration and electrolyte abnormalities.



MICOR

Milrinone Lactate 10mg/10ml Injection

Indications

Milrinone Lactate, is a medication used in patients who have heart failure. It is a phosphodiesterase 3 inhibitor that works to increase the heart's contractility and decrease pulmonary vascular resistance. Milrinone also works to vasodilate which helps alleviate increased pressures (afterload) on the heart, thus improving its pumping action. While it has been used in people with heart failure.



NOLVATAM

Tamoxifen Citrate Tablets 10mg/20mg



Indications

Indicated for the treatment of Breast Cancer, particularly in oestrogen receptor positive patients.



NATAMYCIN OPHTHALMIC SOLUTION



Indications

Is an antifungal medication used to treat fungal infections around the eye. This includes infections of the eyelids, conjunctiva, and cornea. It is used as eyedrops.



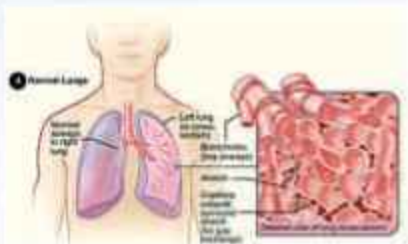
PIRFENIDONE

Indications

Pirfenidone is a medication used for the treatment of idiopathic pulmonary fibrosis (IPF). It works by reducing lung fibrosis through downregulation of the production of growth factors and procollagens.

Idiopathic pulmonary fibrosis.

Synonyms Cryptogenic fibrosing alveolitis, diffuse fibrosing alveolitis, usual interstitial pneumonitis.



PEDMOX

Syrup Amoxicillin



Indications

Amoxicillin is an antibiotic often used for the treatment of a number of bacterial infections.



PROPYLTHIOURACIL

Indications

Propylthiouracil (PTU) is a medication used to treat hyperthyroidism.

Propylthiouracil is in the antithyroid family of medications. It works by decreasing the amount of thyroid hormone produced by the thyroid gland and

blocking the conversion of thyroxine (T₄) to triiodothyronine (T₃).



PARAFALGAN I.V.

Paracetamol I.V. 1000mg/100ml



Indications

Paracetamol is a medication used to treat fever and mild to moderate pain.

Paracetamol significantly relieves pain in acute migraine but only slightly in episodic tension headache

Paracetamol for Infusion is indicated for the short-term treatment of moderate pain, especially following surgery, and for the short-term treatment of fever, when administration by intravenous route is clinically justified by an urgent need to treat pain or hyperthermia and/or when other routes of administration are not possible.



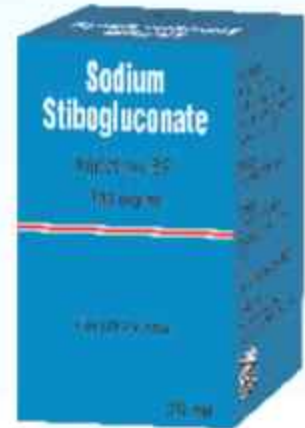
SODIUM STIBOGLUCONATE

Sodium Stibogluconate 100mg/ml



Indications

Sodium Stibogluconate is a medication used to treat leishmaniasis.



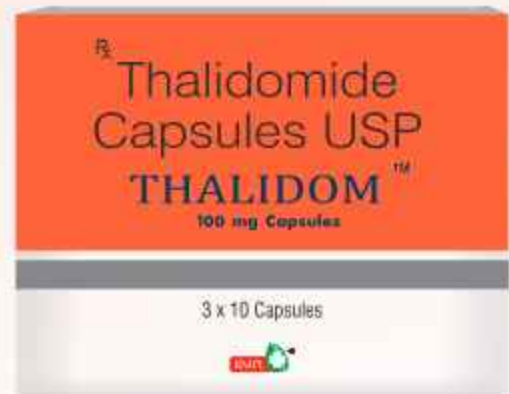
THALIDOM

Thalidomide 100 mg

Indications

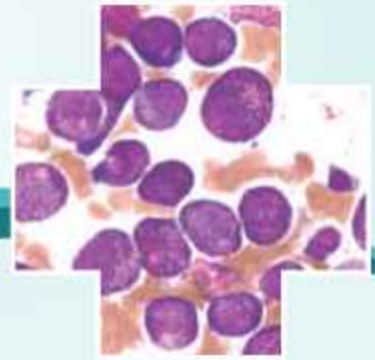
Thalidomide is a medication used to treat a number of cancers (including multiple myeloma).

Thalidomide is primarily indicated for the acute treatment of the cutaneous manifestation of moderate to severe erythema nodosum leprosum (ENL).



Ves-ATRA

All Trans Retinoic Acid /Tretinoin Softgel Capsules 10mg



Indications

For the induction of remission in patients with Acute Promyelocytic Leukemia-

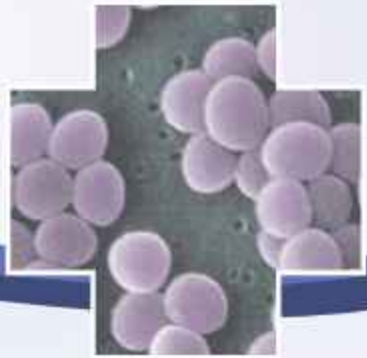
Who are refractory to or who have relapsed after anthracycline chemotherapy.

For whom anthracycline based chemotherapy is contraindicated.



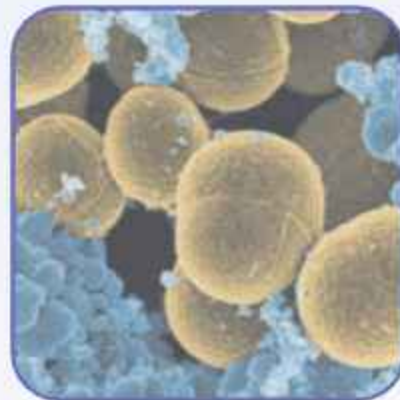
VANCOBACT

Vancomycin HCl for I.V. Infusion 500mg/1000mg



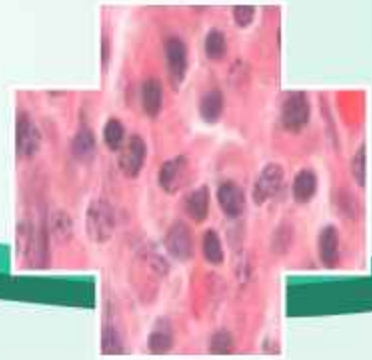
Indications

- Life-threatening infections due to susceptible Gram +ve organisms, which are resistant to penicillins and cephalosporins.
- Endocarditis, Osteomyelitis, Pneumonia, Septicaemia and Skin and Soft Tissue infections caused by Staphylococcus Aureus, particularly Methicillin-resistant Staphylococcal strains.



VELIMIDE

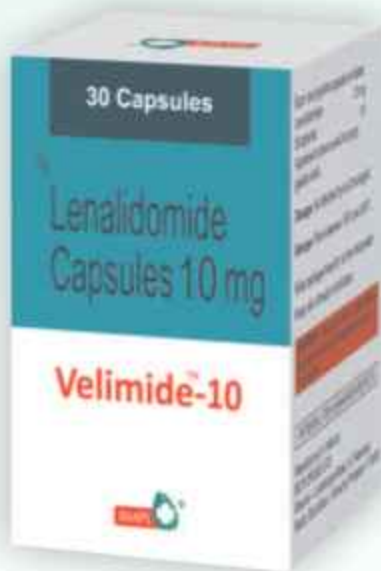
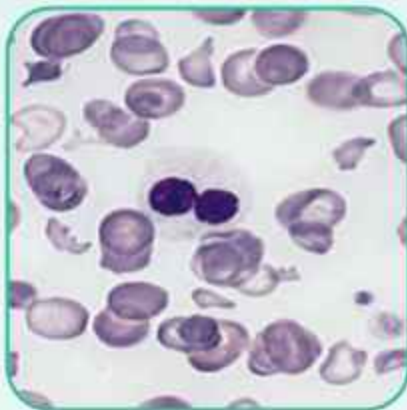
Lenalidomide 10 mg / 25 mg



Indications

Lenalidomide is a medication used to treat multiple myeloma and and myelodysplastic syndromes.

Lenalidomide has been used to successfully treat both inflammatory disorders and cancers.



XELOBINE

Capecitabine Tablets 500mg



Indications

Metastatic Breast Carcinoma



Metastatic Colorectal Carcinoma



- Important component of Xelox (Capecitabine plus Oxaliplatin) regime used in Colorectal Carcinoma*.
- Capecitabine combined with Docetaxel offers **superior survival** in anthracycline-pretreated **Advanced Breast Carcinoma**.¹
- Single agent Capecitabine is **effective, safe, cost effective** and provides superior **Quality of Life** in previously treated **Metastatic Breast Cancer**.²



Reference:- 1. O'Shaughnessy J, et al. J Clin Oncol. 2002;20(12):2812-23

2. Ershler WB. The Oncologist. 2006;11:325-335.

*Data on file





Thank You



RMPL PHARMA LLP.

Corporate Office

Office No. 2, 1st floor, Sunbeam Chambers,
7 New Marine Line, Opp. Liberty Cinema, Mumbai - 400020, INDIA
Tel.: +91 22 2200 4057 / 2200 6811 • Mobile: +91 98203 44456
Email: rmpl123@yahoo.in • Website: www.rmplpharma.com

ISO 9001 : 2015, ISO 45001: 2018 & WHO-GMP & GDP Certified Company