



About Us

At **Shree Dhanwantri Herbals Private Limited**, we combine **deep-rooted Ayurvedic knowledge** with **modern manufacturing capabilities** to create high-quality, reliable herbal health products. With over **70 years of experience**, our formulations are developed with **care, precision, and a strong focus on consistency and safety**.

Our strength lies in balancing traditional Ayurvedic ingredients with robust, certified production systems. Every product is manufactured in **ISO 9001:2015** and **GMP-certified facilities** and we ensure the highest hygiene and quality standards are maintained.

As we grow, our focus remains on delivering **affordable, trustworthy, and well-researched Ayurvedic solutions** for everyday wellness.

What Sets Us Apart?



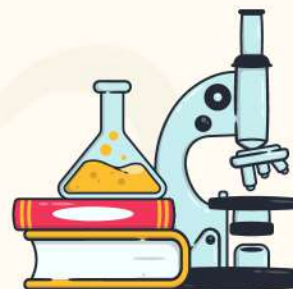
Strict Quality Control

We use the finest raw materials, backed by thorough testing at every stage to ensure purity and effectiveness



Reliable Manufacturing Infrastructure

Scalable, compliant systems that support both classical and proprietary Ayurvedic product lines



Dedicated R&D Team

Continuously working on improved formulations and new formats aligned with evolving health needs



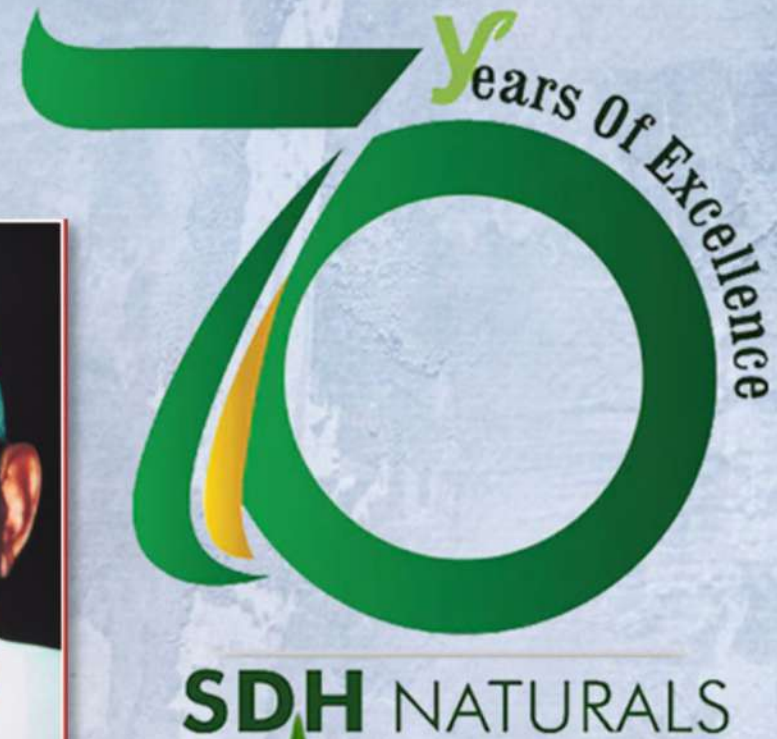
Strong National Distribution

A widespread network serving government bodies, hospitals, NGOs, and retailers across India

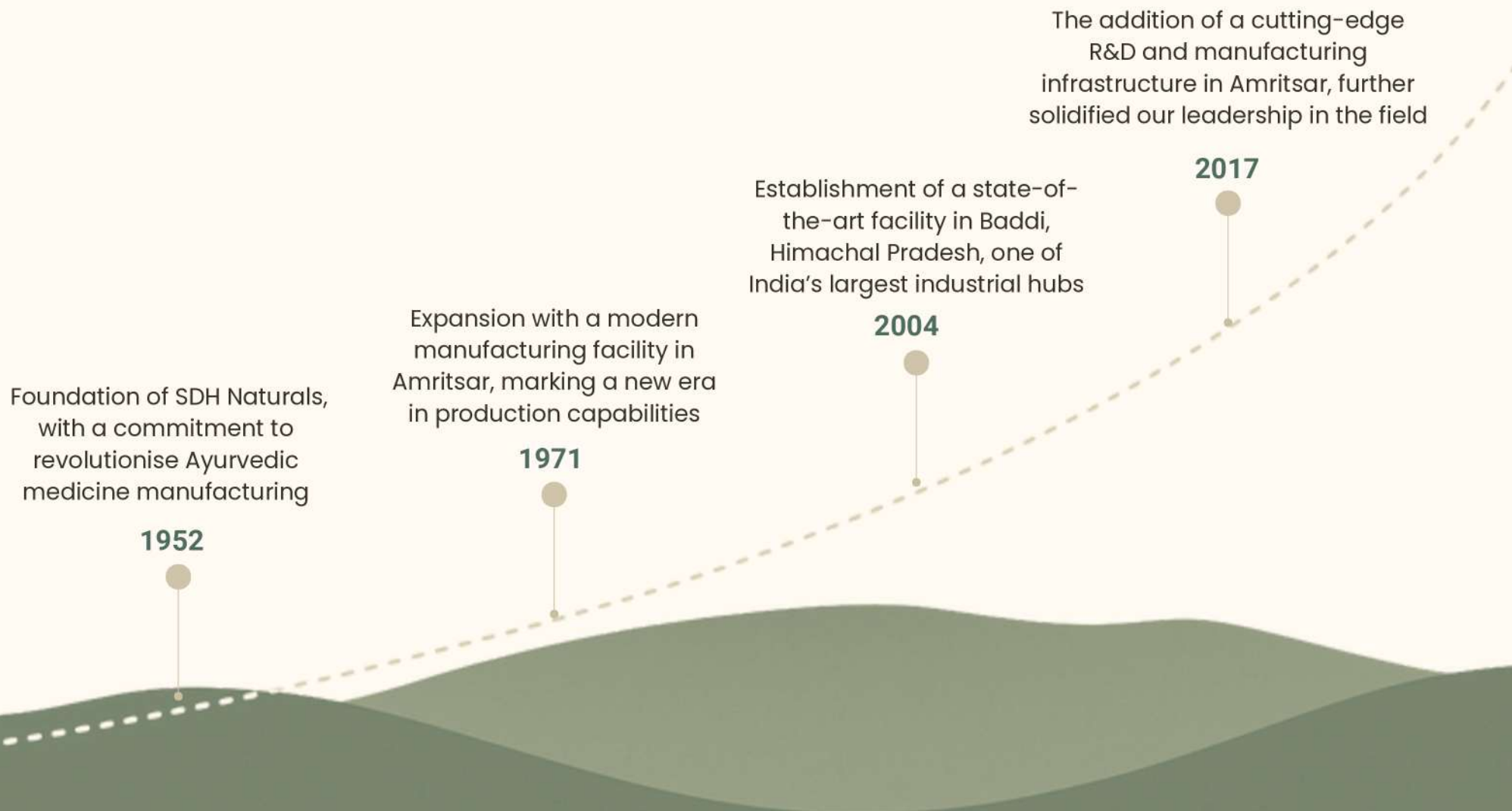
Our History

Founded in **1952** by **Late Vaidya Din Dyal Singh Ji** in Amritsar, SDH Naturals was born from a vision to transform the manufacturing of Ayurvedic medicines.

Over the past **70+ years**, SDH has evolved from its origins in **traditional Ayurvedic formulations** to become a trusted name in India, known for its focus on **innovation, quality, and sustainability**.



Our Journey



INFRASTRUCTURE

State-of-the-Art Manufacturing Facilities

SDH Naturals operates 2 GMP-certified manufacturing units totalling over 2.95 lakh sq. ft, featuring fully-automatic and semi-automatic machinery.

Unit 1 - Amritsar

Manufacturing Area - 175000 sq ft
QC, QA and R&D block - 15000 sq ft
Admin Block - 5000 sq ft



Unit 2 - Baddi

Manufacturing Area - 45000 sq ft
QC & QA Block - 10000 sq ft
Herbal Garden - 40000 sq ft
Admin Block - 5000 sq ft



Our Core Values



PURITY

Rooted in traditional
Ayurvedic sourcing and
clean formulations



PRECISION

Pharmaceutical-grade
quality, validated by modern
testing



INTEGRITY

Ethical manufacturing,
transparent partnerships



SCALABILITY

Infrastructure that grows
with your brand



TRUST

70+ years of consistent
outcomes, built on credibility



MISSION

Our **mission** is to develop and manufacture authentic Ayurvedic formulations through advanced **R&D, world-class infrastructure,** and **stringent quality systems.**

We aim to empower individuals and institutions with safe, effective, and accessible herbal solutions - rooted in tradition, aligned with modern healthcare needs, and guided by integrity, innovation, and excellence.

VISION

Our **vision** is to become the most trusted name in Ayurvedic healthcare, by building world-class formulations, manufacturing at uncompromising standards, and earning long-term credibility across practitioners, institutions, and consumers.

Our Certifications



ZED Certified



FDA Registered
Cosmetic Facility



AYUSH Premium
Mark Certified

Form C
Government of India
Food Safety and Standards Authority of India
License under FSS Act, 2006

argfity eapp / License Number: 1212299600076

1. Name & Registered Office address of Licensee / argfityeapp to village codes as per city code: SHREE DHANWANTRI HERBALS, HADIBAST NO. 334, VPO NAAG KALAN, MAJITHA ROAD, AMRITSAR, PUNJAB, AMRITSAR, Punjab-143001

2. Address of Authorized Premises / argfityeapp as per city code: HADIBAST NO. 334, VPO NAAG KALAN, MAJITHA ROAD, AMRITSAR, PUNJAB, AMRITSAR, Punjab-143001

3. Kind of Business / argfityeapp as per: Manufacturer - Food or Health Supplements and Nutraceuticals etc.

4. Dairy Business Details / argfityeapp as per: No

5. Category of License / argfityeapp as per: Central License

This license is granted under and is subject to the provisions of FSS Act, 2006 all of which must be complied with by the licensee. The licensee may also do more activities, such as selling other food items & non-food items as per the FSS Act, 2006.

Place / work: FSSAI Delhi Regional Office-I
Issued On / Date: 11-03-2022 (New License)
Valid Upto / Date: 10-03-2027 (For details, refer Annexure)

Designated Officer
Officer in-charge

Annexures:
1. Product Annexure
2. Validity Annexure
3. Non-Food C. Annexure
4. Conditions Of License

Note:
1. Application for renewal of License can be filed as early as 180 days prior to expiry date of License. You can file application for renewal or modification of License by login into FSSAI's Food Safety Compliance System (<https://fssai.gov.in>) with your user id and password or call us at 18001121300 for any clarification.
2. This License is only to commence or carry on food businesses and not for any other purpose.
3. This is computer generated license and doesn't require any signature or stamp by authority.

Page 1 of 11

FSSAI Licensed
Facility

GOVERNMENT OF PUNJAB
(DEPARTMENT OF AYURVEDA)
SECTOR-11-D, CHANDIGARH
FORM 26 E - 1
(See Rule 155 - B)

(Certificate of Good Manufacturing Practices (GMP) to manufacturer of Ayurveda / Sidha or Unani drugs).

Certified that manufacturing unit licensee, namely M/s. Shree Dhanwantri Herbs, situated at, Hadibast No 334, VPO Nag Kalan-143601 Majitha Road via Majitha District Amritsar State of Punjab Licence No. 20 Ay-Pb Comply with the requirements of Good Manufacturing Practices of Ayurveda, Sidha, Unani drugs as laid down in Schedule T of the Drugs and Cosmetic Rules 1945.

This certificate is valid 08-03-2022 Up to 07-03-2027

Date:
Place: CHANDIGARH

State Drug Licensing Authority

GMP Certified
Facility

Certificate of Compliance
This is to certify that
Hazard Analysis & Critical Control Point System of
SHREE DHANWANTRI HERBALS
ADDRESS: - HADIBAST NO. 334, VPO NAAG KALAN, MAJITHA ROAD, AMRITSAR-143001, PUNJAB (INDIA)
Has been independently assessed by DGACERT and is compliant with the requirements of
HACCP
For the following scope of activities:-
MANUFACTURING, DEVELOPMENT, STORAGE, INSPECTION, PACKAGING AND DESPATCH OF AYURVEDIC HERBAL MEDICINES, AYURVEDIC HERBAL COSMETIC, AYURVEDIC, HERBAL FOOD SUPPLEMENTS AND AYURVEDIC HERBAL ANIMAL FOOD SUPPLEMENTS.
Certificate No.: 22806551021HA
Initial Registration Date: 05/03/2024
Issuance Date: 05/03/2024
Date of Expiry: 04/03/2027
1st Surveillance Audit Due: 04/03/2025
2nd Surveillance Audit Due: 04/03/2026
DGACERT
HACCP
Auth. Signature
Auth. Stamp
QR Code

HACCP Certified
Facility



FDA (USA)
Registered Facility



UAE MOHAP Registered
Manufacturing Site



The System Behind Consistent Excellence



Backed by 70+ years of trust in Ayurvedic healthcare, with strong systems and values



Defined by professionalism, innovation, and collaborative execution



A future-ready mindset – open to continuous improvement and technology integration



Digitised, CBO-controlled operations with secure document management



Supported by skilled professionals and scientific advisors ensuring consistent lab performance



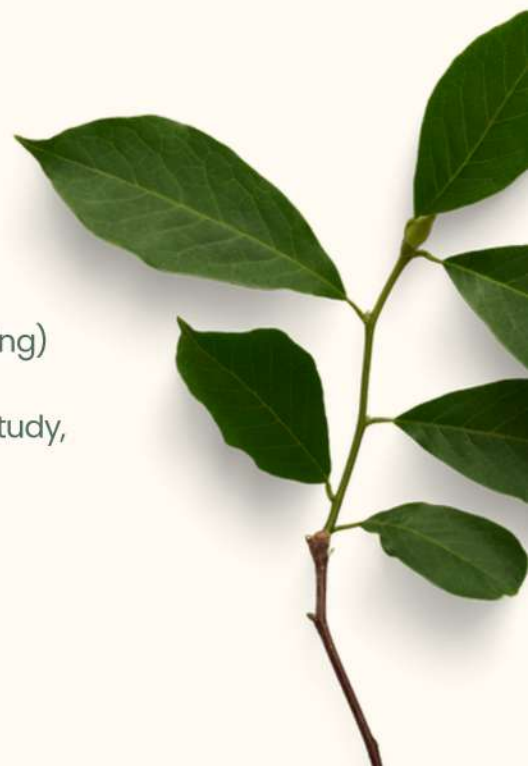
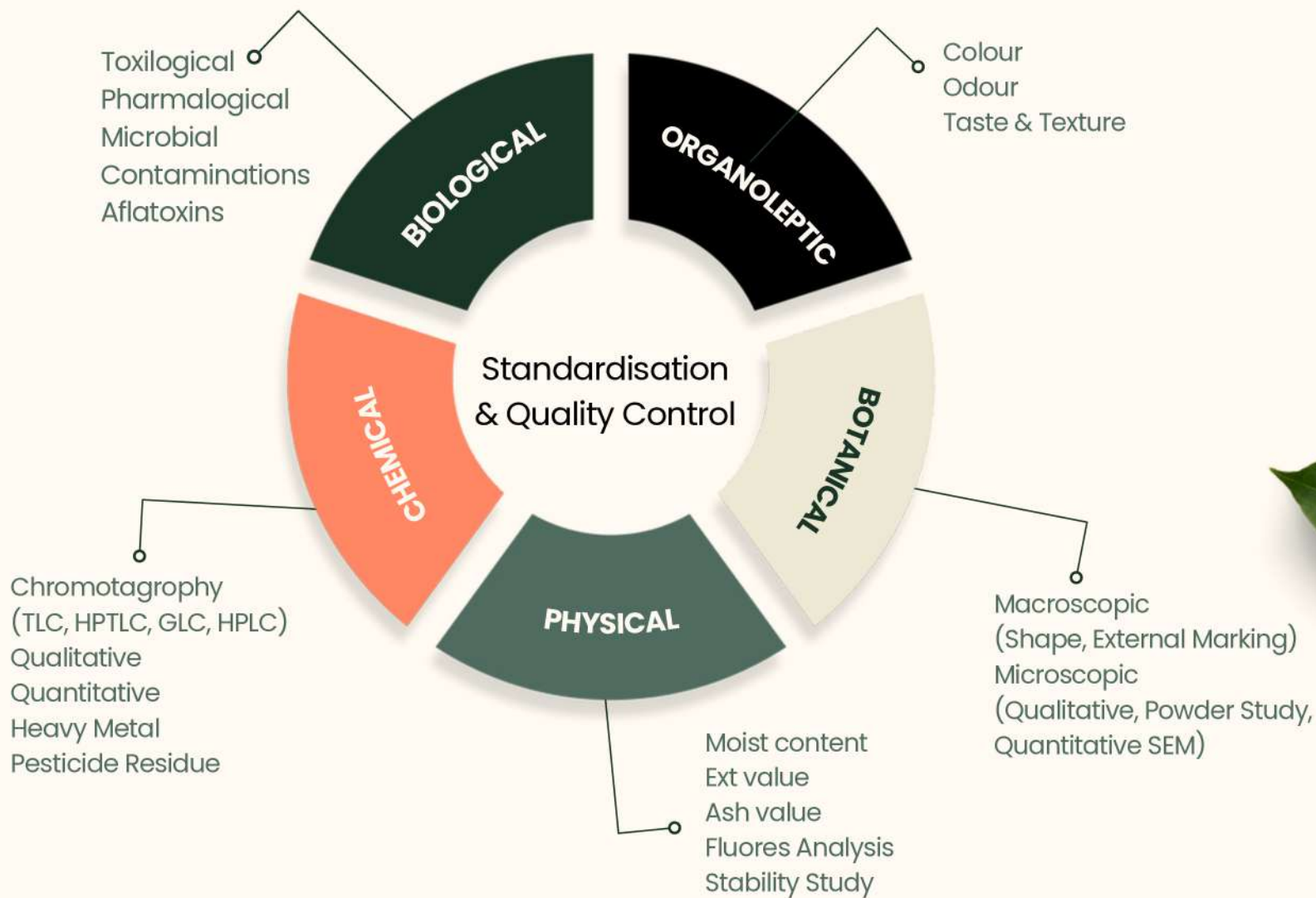
Reliable infrastructure with uninterrupted power, DG backup, and eco-compliant ETP systems



Standardization & Quality Control



Our standardization techniques aren't just followed, they're enforced.



Dosage Forms



CAPSULES



TABLETS



POWDERS



CAPLETS



EFFERVESCENT
TABLETS



SYRUP



SHAMPOO



RESIN



GELS



SACHETS



GRANULES



CREAMS



ASAV - ARISHTA



TOOTHPASTE



CHYAWANPRASH



OILS



OINTMENTS



EYE DROPS



FACE WASH



SPRAYS



ROLL ONS



Third Party Manufacturing



At SDH Naturals

We partner with you to develop, manufacture, and package world-class herbal formulations –backed by decades of Ayurvedic expertise and modern pharmaceutical excellence.

Why SDH?



70+ Years of
Ayurvedic Knowledge

45 +

45+ Years in Contract
Manufacturing



GMP-Certified, Hi-
Tech Infrastructure



450+ Ready Ayurvedic &
Herbal Formulations



In-House R&D, Quality
Control & Branding Support

our product	→	our brand	→	your packaging
our product	→	your brand	→	your packaging
your product	→	your brand	→	your packaging
your product idea	→	SDH R&D + branding	→	your brand packaging

Ready to Build Your Brand?

R&D

White Label

Private Label

Export Ready
Packaging



Specialised Formulations Across Categories

Personal Wellness & Everyday Care



Skincare



Haircare



Oral Care



Vet Care



Cosmetics



Pet Care

Therapeutic & Clinical Care



Cardiac Care



Ortho Care



Respiratory Care



Liver Care



Renal Care



Gastro Care

Preventive, Hormonal & Holistic Health



Immunity Booster



Neutraceuticals



General Health Care



Child Care



Men's Health Care



Women's Health Care

Cosmetic Manufacturing Expertise



Face Care

(Daily essentials & advanced skincare solutions)



Face Wash (Foam, Gel, Cream-Based)



Face Serums



Toners & Face Mists



Moisturisers



Face Scrubs



Face Masks

Body Care

(Nourishment, exfoliation & wellness from neck to toe)



Body Lotions & Butters



Body Scrubs



Body Washes, Bath Gels & Cleansers



Sunscreens



Massage Oils



Period Care

Hair Care

(From scalp therapy to styling & repair)



Shampoos



Conditioners & Masks



Hair Serums



Herbal Hair Oils



Natural Hair Colour



Hair Vitalisers & Scalp Mists

Speciality Cosmetics

(Premium care for targeted segments)



Lip Care



Under-Eye Creams & Roll Ons



Ubtan & Lepa Blends



Intimate Hygiene Products



BB Creams / Herbal Tinted Moisturizers



Tailams

Production Capacity Overview

per shift



300 M

TABLETS



7.5 M

BOTTLES OF 60-120
ML OF OIL



175 M

CAPSULES



8 M

TUBES OF
CREAM/GEL/OINTMENT/
BALM OF 30 GM



1500 Metric Tonnes

POWDERS, GRANULES,
CHURNAS



2.5 M

BOTTLES OF EYE DROPS



17.5 M

BOTTLES OF 100ML
SYRUP



1.2 M

OF JAR OF
CHYAWANPRASH



5 M

BOTTLES OF 200 ML
OF ASAVA ARISHTA



A Glimpse Into Our R&D and Manufacturing Infrastructure



Stability Chamber: Ensuring Product Shelf-Life & Quality

Built to ICH & WHO Standards – For Global-Grade Shelf-Life Assurance

What Sets Us Apart ?

Fully equipped, ICH-compliant stability chambers

Controlled temperature & humidity environments with 24/7 monitoring

Supports long-term, intermediate, and accelerated testing

Calibrated and validated regularly as per regulatory norms

Why It Matters ?

Predicts the real-world shelf-life of your products

Ensures formulation stability across varying climatic conditions

Critical for regulatory approvals & export documentation



Stability Chamber: Ensuring Product Shelf-Life & Quality

Built to ICH & WHO Standards – For Global-Grade Shelf-Life Assurance

Our Facility Highlights

ICH-Compliant Zones:

- Accelerated ($40\pm 2^{\circ}\text{C}$, $75\pm 5\%$ RH) for 6 months
- Long-Term ($30\pm 2^{\circ}\text{C}$, $65\pm 5\%$ RH) up to 60 months

Climatic Zone Coverage:

Zones I–IV (India, US, Europe, Japan, Africa, SE Asia)

Sample Schedules:

- Exhibit & validation batches: 0, 3, 6, 9, 12, 18, 24 months
- Annual review & reconciliation by QA
 - Microbial & physico-chemical testing at every time point

Integrated with SOP QA-055

Sample reconciliation, deviation handling & shelf-life evaluation



Trusted by India's Leading Wellness & Healthcare Brands

From Ayurvedic formulations to large-scale production – these are just some of the companies who rely on SDH Naturals for quality, innovation, and scale.



Selected Brands Manufactured by Us



Empowering Brands with Scalable Ayurvedic Solutions



Dr R.S Singh

Director - Marketing

rssingh@shridhanwantri.com

SHREE DHANWANTRI HERBALS PRIVATE LIMITED

AN ISO 9001:2015 COMPANY

Adm. Office & Unit-I : HADBAST No. 334, V.P.O. Nag Kalan-143 601. Majitha Road,
Distt. AMRITSAR (Pb.) INDIA

Unit-II : Village Kishanpura, P.O. Gurumajra-174 101, Teh. Baddi, Distt. SOLAN (H.P.) INDIA

Website: www.shreedhanwantri.com