



oscillation solid dose RMG  
granulation liquid MASS MIXER  
ROLL COMPACTOR blenders SIFTER  
fbd all type of mill capsules syrup  
TABLET COMPRESSION SAIPRESS & OINTMENT  
PRESS single I/II/IV lab model fbp punches  
& doublesided rotary inspection



SAIMACH PHARMATECH PVT. LTD.

REGISTERED OFFICE :

Plot No.5 & 6, Laxmi Industrial Estate, Behind Navneet Prakashan Compound, Ajod Dairy Road,  
Rakhial. Ahmedabad 380023 Gujarat INDIA  
Tele-Fax : +91 - 79 - 2276 0100. Mobile : +91 6356 28 5555 | +91 6356 29 5555  
E-mail : sales@saimach.com | contact@saimach.com | sales@saimach.in | contact@saimach.in  
www.saimach.in | www.saimach.com

MANUFACTURING UNIT :

Plot No. 1712, Phase 3, Vatva GIDC, Vatva, Ahmedabad-382445. Gujarat. India.

**Manufacturer & Exporter Of Oral Solid Dose Granulation,  
Tablet Compression / Presses, Capsule, Liquid / Syrup &  
Ointment Section Machineries.**

[www.saimach.in](http://www.saimach.in) | [www.saimach.com](http://www.saimach.com)  
[sales@saimach.com](mailto:sales@saimach.com)



# ABOUT US

leading brand for  
**PHARMACUTICAL MACHINERIES** with **2300+**  
**SUCCESSFUL** Installations

SAIMACH PHARMATECH PVT. LTD. as an OEM has focused in Roll Compactor Machine, Tablet Presses (Tableting Machine) along with its Punches & Dies/Tablet Tools, Granulation Machines, Automatic Coating Machines for respective technology, starting from Development Machineries for Innovative Formulations up to scale up Machineries. The founders of the company are Professional Mechanical Engineers having more than 25 to 28 years of manufacturing and domestic / export marketing of pharmaceutical machineries, who established their Goodwill with the customers with responsible & loyal approach.

Our state-of-the-art plant is located at Ahmedabad City, well known city of Gujarat State (India). The manufacturing plant and office is located very nearer (approximately 10 km distance) to the Ahmedabad Airport. The prime goal of the Company is "To Touch the Hearts of our customers by product and services at superior quality with most modern engineering, at a competitive price." To achieve our goal, the company always ready to well-come the valuable suggestions, innovative ideas & feedback from the customers to improve the efficiency and performance of the products / equipments in a better way. SAIMACH always value the trust of our customers, and keep their interests paramount in every development/improvement we do, every choice we exercise. Through the ongoing process of achieving the product excellence, we re-think every business process, product and service from the standpoint of our customer – so as to exceed expectations at every touch point. We also believe in excellence of execution in large complex projects as much as small everyday tasks. "If something is worth doing, it is worth doing well."

"The whole is always is greater than some of its parts" – In our fast growing knowledge economy, organization can prosper by the spirit of "Thinking Together – Team Work". Our Marketing Team is in direct contact with customers for any technical /after sales support. The Team also access new requirements of customers for future with new or continuous innovations backed by strong Technical / Design & Development Department. The Production, Quality Control and Design & Development Teams are with highly qualified Engineers & well equipped with latest software of machine design, latest manufacturing machines & Inspection Equipments with one-and-only common goal that "Delight our Customers through innovative products, by utilizing advance technologies & services".- SAIMACH Manufacturing range includes Tablet Section Machineries, Granulation Section Machineries & Automatic Coating Machines to the Pharmaceutical Companies as well as Chemical, Candy, Food, Catalyst Industries, Salt Industries, Camphor Industries, Naphthalene Balls Industries, Fertilizer Industries etc.

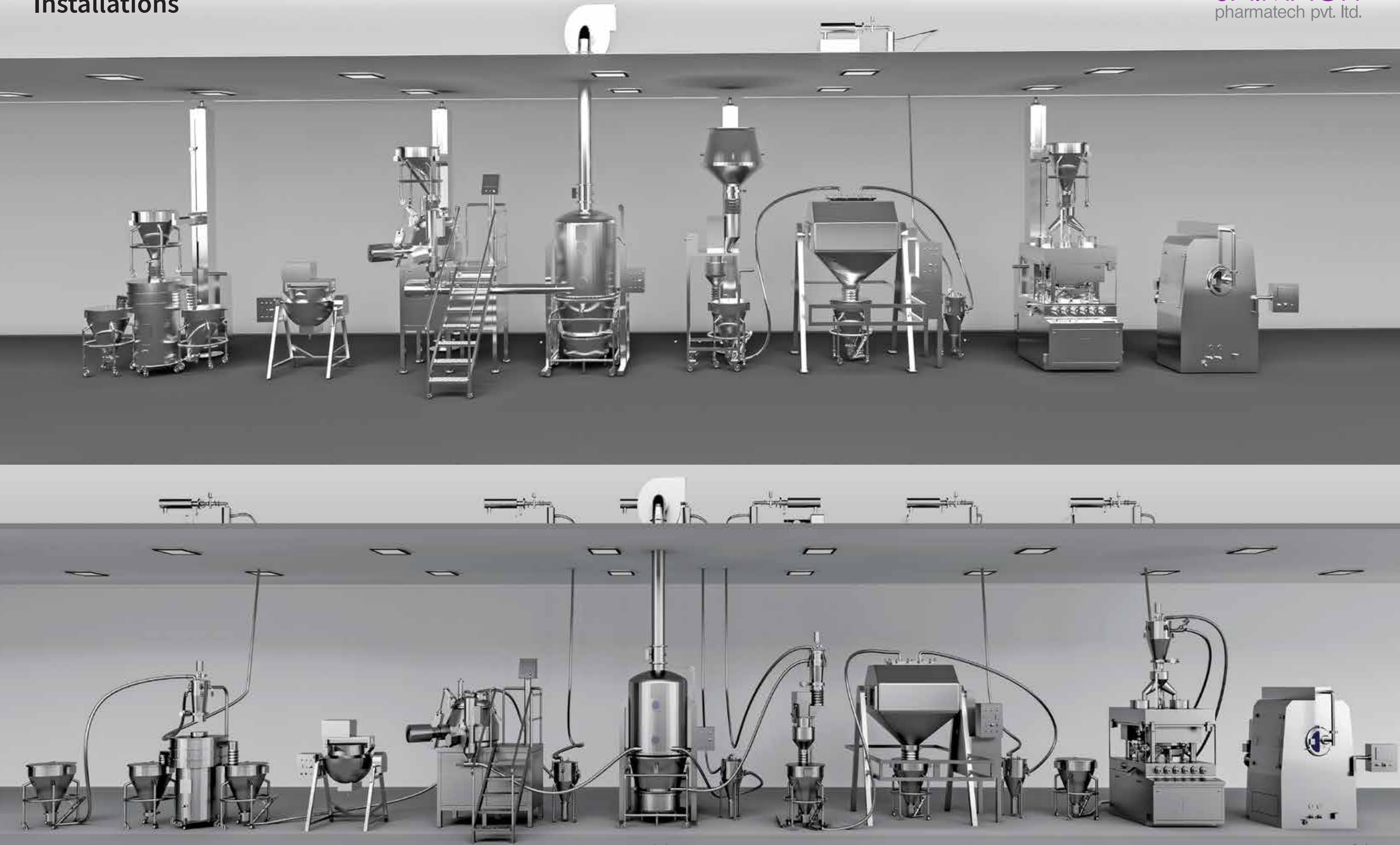
We possess no greater asset than the quality of Human Capital and no greater priority than the retention, growth and well being of our vast pool of human talent. We honor human values, business ethics & honest growth. We respect competition, because there's more than one way of doing things right. We can learn as much from the success of others as from our own failures.



leading brand for  
**PHARMACUTICAL MACHINERIES**  
with **2300+** SUCCESSFUL  
Installations

Manufacturer & Exporter of Oral Solid Dose Granulation,  
Tablet Compression / Presses,  
Capsule, Liquid / Syrup & Ointment Section Machineries.

[www.saimach.in](http://www.saimach.in) | [www.saimach.com](http://www.saimach.com)



# RAPID MIXER GRANULATOR

Optional : Wet Cone Mill with VFD



## SALIENT FEATURES :

- Model is available from 5 liter to 1200 liter working capacity.
- Fully automatic operation based on PLC control (optional).
- Inline Cone Mill (optional).
- ACVFD for Impeller motor & chopper motor (optional).
- Better productivity & lesser mixing time.
- Contact parts are SS 316.
- Uniform mixing & granulation.
- Less handling. More hygienic.
- cGMP with documentation.
- Pneumatically Operated Top Lid & Discharge

## TECHNICAL SPECIFICATIONS :

MODEL	SMRMG	SMRMG	SMRMG	SMRMG	SMRMG	SMRMG	SMRMG	SMRMG	SMRMG	SMRMG	SMRMG
	10	25	50	100	150	250	400	600	800	1000	1200
Gross Volume Liter	10	25	50	100	150	250	400	600	800	1000	1200
Working Volume Liter	8	20	40	80	120	200	320	480	640	800	960
Mixer Motor (HP)	1.5	5	7.5	10	16	30	40	50	60	75	100
Chopper Motor (HP)	1	2	3	3	3	5	7.5	7.5	10	14	14
Compressed Air Pressure	6 to 8 (bar)										
Power Supply	AC 415 V ± 10%, 3 Phase, AC										

# FLUID BED DRYER



## SALIENT FEATURES :

- Very versatile process equipment.
- Fully automatic operation based on PLC control. (optional)
- Minimum handling and more hygienic.
- Top Mounted telescopic cylinder for auto bag shaking. (optional)
- Solid Flow Monitor. (optional)
- HEPA Filter, Police Filter, Blower Silencer, Inlet - Outlet Ducting, PLC-HMI. (optional)
- Clamp type bottom mesh for container.
- Capacity available from 2 kgs. to 500 kgs.
- MOC SS 316 Contact Parts.
- cGMP with documentation.

## TECHNICAL SPECIFICATIONS :

MODEL	SMFBD - 15	SMFBD - 30	SMFBD - 60	SMFBD - 120	SMFBD - 200	SMFBD - 250	SMFBD - 300
Container Gross Volume Liters.	46	71	142	280	475	780	650
Maximum Batch Capacity (0.5bd) Kg.	10 to 15	20 to 30	40 to 60	80 to 120	160 to 200	200 - 250	200 to 300
Blower Motor HP**	5	7.5	10	15	20	25	30
Air Flow (CFM) ± 10%	430	706	1060	1880	2590	3000	3235
Steam Consumption (kg /hour)	30	50	80	140	216	220	250
Electric Heater (KW)	20	20	36	60	70	N.A.	N.A.
Steam Pressure (kg / cm2)	3.5	3.5	3.5	3.5	3.5	3.5	3.5
Compressed Air Pressure (bar)	6	6	6	6	6	6	6
Drying temp (°C)	35-80	35-80	35-80	35-80	35-80	35 - 80	35 - 80
Power Supply	415 V, ± 10%, 3 Phase, AC						



# FLUID BED PROCESSOR



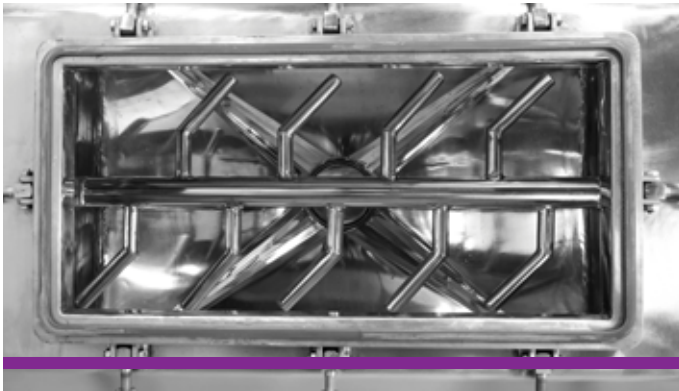
## SALIENT FEATURES :

- Very versatile process equipment.
- Fully automatic operation based on PLC control. (optional)
- Minimum handling and more hygienic.
- Top Mounted telescopic cylinder for auto bag shaking. (optional)
- Solid Flow Monitor. (optional)
- HEPA Filter, Police Filter, Blower Silencer, Inlet - Outlet Ducting, PLC-HMI. (optional)
- Clamp type bottom mesh for container.
- Capacity available from 2 kgs. to 500 kgs.
- MOC SS 304 / 316.
- cGMP with documentation.

## TECHNICAL SPECIFICATIONS :

MODEL	SMFBD - 15	SMFBD - 30	SMFBD - 60	SMFBD - 120	SMFBD - 200	SMFBD - 250	SMFBD - 300
Container Gross Volume Liters.	46	71	142	280	475	780	650
Maximum Batch Capacity (0.5bd) Kg.	10 to 15	20 to 30	40 to 60	80 to 120	160 to 200	200 - 250	200 to 300
Blower Motor HP**	5	7.5	10	15	20	25	30
Air Flow (CFM) ± 10%	430	706	1060	1880	2590	3000	3235
Steam Consumption (kg / hour)	30	50	80	140	216	220	250
Electric Heater (KW)	20	20	36	60	70	N.A.	N.A.
Steam Pressure (kg / cm2)	3.5	3.5	3.5	3.5	3.5	3.5	3.5
Compressed Air Pressure (bar)	6	6	6	6	6	6	6
Drying temp (°C)	35-80	35-80	35-80	35-80	35-80	35 - 80	35 - 80
Power Supply	415 V, ± 10%, 3 Phase, AC						

# OCTAGONAL BLENDER



## SALIENT FEATURES :

- Available in various models i.e Octagonal, V-Type or Double Cone Blender.
- Available for smaller volume capacity or Pilot Scale volume capacity
- In compliance with cGMP guideline.
- Effective blending with help of mixing baffles.
- Easy to clean.
- PLC/HMI system (Optional)
- Flameproof Construction (Optional)
- Product contact parts made of SS 304 & Non-contact parts SS 304

## TECHNICAL SPECIFICATIONS :

MODEL	SMOB	SMOB	SMOB	SMOB	SMOB	SMOB	SMOB	SMOB	SMOB	SMOB
	50	100	200	300	500	800	1000	1200	1500	2000
Gross Capacity (Liter)	50	100	200	300	500	800	1000	1200	1500	2000
Working Capacity (Liter)	35	75	140	210	350	560	700	840	1050	1400
Machine RPM (Max.)	24	24	24	24	16	16	16	16	16	12
Discharge Port Diameter (Inch)	3	4	6	6	6	8	8	10	12	12
Main Drive Motor (HP)	1	1	2	2	3	5	7.5	7.5	7.5	10

\* Available in various models i.e Octagonal, V - Type or Double Cone Blender.

# AUTOMATIC TABLET COATING MACHINE



### OPTIONAL FEATURES

- CIP/WIP Systems
- Pan Interchangeability (with trolley and parking racks up to 60")
- Steam & electric heat exchanger
- Tablet charging by bin loader
- Sugar Coating System
- Exhaust Air Treatment System
- Mass Flow Meter Based Spray Rate Control Systems

### SALIENT FEATURES :

- **Inlet Air Handling Units (AHU)**
  - Our range of high-quality air handling systems are an integral part of our Automatic Tablet Coating Machine. The control of temperature & humidity within the Automatic Tablet Coating Machine is critical to the performance of the machine and we make sure that each AHU is designed for the application. Each unit is designed to meet the customer's needs and these air handling systems can be configured to meet the most demanding environmental conditions.
  - Modular design to meet process requirements and space limitations
  - Dehumidification of inlet air using chilled water, brine or desiccant systems
  - Mist removal system is provided
  - Air heating system with a choice of energy sources such as steam or electrical energy
  - Filtration to the highest standards
- **Anti-Bearding Spray Nozzles**

With the new Anti-Bearding Nozzles, an excellent spray pattern is achieved without any beard formation. For the first time the distance between the bed & the spray nozzle is displayed on the HMI screen. The spray angle and distance are adjustable. The nozzles are easy to clean.
- **Changeable Pan System**

Now, you can exchange a pan in the equipment. This gives batch size flexibility in the same equipment. Investment is only required for a single piece of equipment. This feature is modular and can be supplied as an option.
- **Single Tablet Discharge**

The discharging system is designed & engineered to discharge a single tablet from the pan without manual intervention. The discharge system can be installed without any tools & is easy to remove from the pan after discharge.
- **Robust & Reliable Process Control**

With a high-tech PLC – HMI system is the heart of the equipment control center, all the process parameters are within very accurate control as well as accessible for operator to monitor as well as record. Exhaustive controls are provided for utilities as well.



### TECHNICAL SPECIFICATIONS :

MODEL	SAC - 24	SAC - 36	SAC - 48	SAC - 60	SAC - 66	SAC - 72
Pan Diameter – Inch (mm)	24 (600)	36 (920)	48 (1220)	60 (1525)	66 (1675)	72(1830)
Brim Volume (Liter)	25	105	212	630	790	1025
Working Capacity – (Kg)	5 to 20*	20 to 70*	70 to 150*	120 to 300*	180 to 400*	350 TO 585
Pan mouth diameter (mm)	250	380	400	520	520	600
Pan Speed (RPM)	1 to 24	1 to 24	1 to 16	1 to 9	1 to 9	1 to 9
Main Motor (Hp)	1	2	3	5	7.5	7.5
Inlet Blower Motor (Hp)	1.5	1.5	5	10	10	15
Inlet Air Flow	750 CMH @200 WC	1400 CMH @200 WC	3000 CMH @200 WC	6000 CMH @200 WC	7500 M <sup>3</sup> /Hr @200 WC	7500 M <sup>3</sup> /Hr @200 WC
Exhaust Blower Motor (Hp)	7.5	10	25	50	50	60
Air Flow Outlet	750 CMH @900 WC	1400 CMH @900 WC	3000 CMH @900 WC	6000 CMH @900 WC	7500 CMH @900 WC	7500 CMH @900 WC
Spraying Nozzle	1	2	3	5	6	6
Spray Rate (gm/minute)	50 to 130	50 to 130	50 to 130	50 to 130	50 to 130	50 to 130
Peristaltic Pump Motor (Hp)	0.5	1.0	1.0	1.0	1.0	1.0
Peristaltic Pump Speed (RPM)	1 to 100	1 to 100	1 to 100	1 to 100	1 to 100	1 to 100
Solution Preparation tank (Liter)	25 (0.25hp)	50 (1 hp)	100 (1 hp)	150 (1.5hp)	150 (1.5hp)	200 (1.5hp)
CIP Pump Motor (Hp)	1.5	1.5	2	2	2	2
Steam consumption Kg/Hour @4 bar	32	70	150	350	380	380
Compressed air CFM @6 bar	10	10	60	90	110	110
Wet Scrubber Pump Motor (Hp/RPM)	1 / 2880	2 / 2880	2 / 2880	2 / 2880	2 / 2880	2 / 2880
Automizing Purging Air (CFM)	20	40	60	60	75	90
Automizing Purging Air Pressure (Kg/Cm <sup>2</sup> )	2.0 to 6.0	2.0 to 6.0	2.0 to 6.0	2.0 to 6.0	2.0 to 6.0	2.0 to 6.0
Chilled Water @3 bar Pressure &	10 USGPM	12 USGPM	50 USGPM	85 USGPM	85 USGPM	110 USGPM
5°CHW Inlet temperature						



# MULTI MILL



## TECHNICAL SPECIFICATIONS :

MODEL	SM-MM-200
Output *	50 to 200 Kg/Hour
Rotor Assembly Diameter	250 mm. Approx.
Rotor Speed	750 / 1500 / 2300 / 3000 RPM
Beaters	12 Nos. with knife and impact edges and 2 Nos. scraper blades
Screen dimension	Inner Dim. 265 mm./ Height 140 mm
Motor	3.0 HP / 1440 RPM / 3 Phase
Starter	"DOL" with reversible switch
Material charging height	1450 ± 5 mm.
Material discharging height	750 ± 5 mm.

# CONE-MILL



## TECHNICAL SPECIFICATIONS :

Output*	Up to 20 Kg/ Hour to 100 kg	Up to 200 Kg/ Hour to 400 kg
	(Through different models & sizing condition)	
Rotor Drive	Belt	Belt
Rotor	Cone type	Cone type
Electric Motor	2 HP / 3 Phase	5 HP / 3 Phase

# COMMINUTING MILL



## TECHNICAL SPECIFICATIONS :

MODEL	SM-CM-300
Output *	25-300 Kg / Hour
Rotor speed	1000 - 2250 - 4500 RPM
Rotor Blades	Fix Beaters (Stainless Steel with knife and impact edge).
Beaters quantity	16 Nos.
Feeding	Manual
Screens	1. Round/Square hole perforated S. S. Sheet 2. Woven S. S. wire mesh
Electrical Motor	5.5 KW / 7.5 HP / 1440 RPM / 3 Phase

# SIFTER



## TECHNICAL SPECIFICATIONS :

MODEL	SMSM 30"	SMSM 36"	SMSM 48"	SMSM 60"
Screens	SS 316	SS 316	SS 316	SS 316
Screen Diameter	750 mm	914 mm	1220 mm	1524 mm
Capacity/Hour *	30 to 300 Kg	40 to 360 Kg	50 to 450 Kg	60 to 600 Kg
Electric Motor	0.5HP/1440 RPM / 3 Phase	1 HP / 1440 RPM / 3 Phase	1.5 HP / 1440 RPM / 3 Phase	2 HP / 1440 RPM / 3 Phase

# OSCILLATING GRANULATOR HORIZONTAL SINGLE / DOUBLE ROTOR



## TECHNICAL SPECIFICATIONS :

MODEL	SMOG-HORIZONTAL
Hopper Size	33 Liter
Screen Area	388 mm (W) X 762 mm (L)
Stirrer Size	Ø 138 mm x 368 mm Length
Oscillation	110 Per Minute
Output *	30 to 200 Kgs./Hour
Power supply	1 HP / 1440 RPM / 3 Phase

MODEL	SMOG-250	SMOG-500
Oscillation Speed	180 Per Minute	180 Per Minute
Output *	20 to 250 Kgs./Hour	50 to 500 Kg/Hour
Motor	2 HP / 1440 RPM / 3 Phase	2 HP / 1440 RPM / 3 Phase
Drive	Motor with Gear Box	Motor with Gear Box

# LIFTING & POSITIONING SYSTEM – POWDER BIN LOADER



## SALIENT FEATURES :

- Design is GMP compliance.
- All contact parts AISI 316 & non-contact parts AISI 304.
- Suitable for inline process with Milling, Sifter or other equipment.
- 360 degree Swivelling movement of lifting arm.
- Structure cladding is SS 304 quality and matt finished.
- Hydraulic power pack system for lifting.
- If the power goes off, the loader remains where it was.
- Limit switches are provided to stop the hydraulic drive when the stroke is completed.

# PASTE KETTLE



## SALIENT FEATURES :

- Available with 5 to 300 Liter Gross Capacity.
- Structure: Stainless steel matt finish.
- Contact Parts: SS 316
- Non-Contact Parts : SS 304
- Available with Steam or Electrical heating.
- Fittings : Pressure Gauge. / Safety Valve. / Coupling for Steam Inlet & Outlet Connection.
- The Product is discharge manually by tilting the bowl through suitable mechanical arrangement.
- Electrical Stirrer : Centered Stirrer. Motor coupled with worm reduction gear box having desired output reduced speed.

# MASS MIXER



## TECHNICAL SPECIFICATIONS :

MODEL	SMM 50	SMM 100	SMM 150	SMM 200	SMM 300
Capacity	50 kg	100 kg	150 kg	200 kg	300 kg
Over flow Capacity	110 Liter	220 Liter	330 Liter	440 Liter	660 Liter
Working Capacity	88 Liter	156 Liter	234 Liter	310 Liter	475 Liter
Speed of Stirrer	35 RPM	35 RPM	28 RPM	28 RPM	15 RPM
Electric Motor Ø 3	3 HP	5 HP	7.5 HP	10 HP	15 HP

# HOT AIR TRAY DRYER



MODEL	SM-TD-24	SM-TD-48	SM-TD-96
Loading capacity	24 Trays	48 Trays	96 Trays
No of Doors	One	One	Two
No of Blowers	One	One	One
Motor	1 HP / 1440 RPM / 415 V	1 HP / 1440 RPM / 415 V	2 HP / 1440 RPM / 415 V
	50 Hz / 3 Phase	50 Hz / 3 Phase	50 Hz / 3 Phase
Electrical Heating Load	12 kW	18 kW	27 kW
Tray Loading	Rack System	One Trolley	Two Trolley
Tray Size	812 mm X 406 mm X 31 mm (32 Inch X 16 Inch X 1 ¼ Inch)		
Trolley Dimension	Fixed Racks	840 mm X 960 mm X 1780 mm	

# VACUUM TRAY DRYER

## SALIENT FEATURES :

- Design is cGMP – Current Good Manufacturing Practices compliance.
- All Product contact parts AISI 316/316L & non contact parts AISI 304.
- Simple & compact Design for Easy to Operate, Clean, Convenient & User Friendly.
- High Vacuum and Low Temperature Drying Operation with Solvent Recovery.
- Condenser, Receiver for Solvent Recovery & Cyclone separator to recovery the solid particle.
- Homogeneous drying with Uniform Properties.
- Safety Features
- Vacuum Relief Valve.
- Overload relay & Emergency stop.

## OPTIONAL FEATURES

- PLC Controls with HMI touch screen.
- SCADA system with 21 CFR Part 11 Compliance.
- Flame proof motor and Operating Panel.

## TECHNICAL SPECIFICATIONS :

MODEL	SMM 50	SMM 100	SMM 150	SMM 200
Model	SVTD - 6	SVTD - 12	SVTD - 24	SVTD - 48
Number of Trays	6	12	24	48
Maximum Loading capacity approximately in Kg				
@0.5 gram/cc bulk density	18	36	72	144
Loading per tray (Kg)	2 to 3.5	2 to 3.5	2 to 3.5	2 to 3.5
Number of shelves	3	5	9	17
Tray Size (mm)	820 X 410 X 50 (H)	820 X 410 X 50 (H)	820 X 410 X 50 (H)	820 X 410 X 50 (H)





# CONVENTIONAL COATING PAN



## TECHNICAL SPECIFICATIONS :

MODEL	12"	18"	24"	30"	36"	42"	48"	60"	72"
Loading Capacity in Kg.	05	7 / 8	20 / 25	40 / 45	60 / 80	90 / 100	110 / 120	150 / 210	200 / 250
Motor HP	0.5	0.5	1.0	1.5	1.5	2.0	2.0	5.0	7.5
Blower HP	0.25	0.25	0.5	0.5	1.0	1.0	1.0	2.0	2.0
Blower fan Volume CFM	90	90	150	150	150	150	150	300	300
Heater Capacity in Kw.	1.0	1.0	3.0	3.0	3.0	3.0	3.0	5.0	5.0

# COLLOID MILL MACHINE



## TECHNICAL SPECIFICATIONS :

MODEL	SMCM-15 (Horizontal)
Output *	100 to 1500 Liter/Hour
Particle size reduction **	5 to 10 Microns
Hopper capacity	15 Liters
Motor	3 HP / 2850 RPM / 3 Phase

# METAL DETECTOR



## SALIENT FEATURES :

- Automatic Balance Coil Principle
  - Client Name and Address Entry
  - Operator Code and Operator Name Entry
  - Batch Code and Batch Name Entry
  - Membrane Touch Pad with 08 Keys
  - Tamper Proof Controls and Password Protection
  - Continuous Self Check and Calibration Verification
  - 100 Product Memories
  - 0-255 Settings for Sensitivity
  - Water Proof Search Coil
- Integral Alarm, On Delay and OFF delay Timers
  - 20Characters X4 Lines LCD For Clear Information
  - Solid State Relay for Arc Free Switching
  - Internal Data Store and Real Time Clock
  - Automatic Parameter Retention
  - Detection and rejection Counters
  - Logging Capability to a Printer for
  - HACCP and ISO Documentation with Parallel Printer interface
  - RS 232 and RS 485 Compatible

# TABLET INSPECTION MACHINE



## SALIENT FEATURES :

- Inspection on both sides of Tablet.
- As per cGMP Standard.
- Reversible of Tablet.
- Foot switch provided on both side for stopping the machine.
- Vibration provided for removing of dust.
- The unit is mounted on caster wheel.
- 0.25 HP Motor.
- Input Power Supply – 220-230V / Single Phase

# TABLET & CAPSULE INSPECTION MACHINE



## TECHNICAL SPECIFICATIONS :

Model	SMTCI
Power Supply	230V / 50 Hz /1 Phase / AC
Conveyer Drive	0.5 Hp Gear Motor Bonfigloli or equivalent
Roller Drive	0.25 Hp Gear Motor Bonfigloli or equivalent
Conveyer speed regulator	ACVFD
Roller speed regulator	ACVFD
Vibrator	230V with regulator
Illuminator	Electronic choke tube light
Castor wheel	Pu type

# ROLL COMPACTOR cGMP

200 / 50 & 200/75  
Plain & Water Jacketted  
Optional : Hydraulic System  
for Rear Roller Inline Mill



Inline Mill with VFD

## ALSO AVAILABLE ONLINE ROLL COMPACTOR...

- |                           |                 |
|---------------------------|-----------------|
| 1. POWDER CHARGING HOPPER | 5. GRANULATOR   |
| 2. POWDER FEEDING HOPPER  | 6. SIFTER       |
| 3. POWDER FEED SCREW      | 7. STORAGE DRUM |
| 4. COMPACTING ROLLER      |                 |

## TECHNICAL SPECIFICATIONS :

MODEL	SMRC-200/50	SMRC-200/75
Output *	5 to 60 Kgs / hr.	10 to 100 Kgs / hr.
Roll Size	Ø 200 mm X 50 mm (W)	Ø 200 mm X 75 mm (W)
Roll Speed	6 to 25 RPM (Step Pulley drive)	6 to 25 RPM (Step Pulley drive)
Feed Screw Speed	5 to 60 RPM (Through A.C. Drive)	5 to 60 RPM (Through A.C. Drive)
Roll Drive Motor	5 HP, 960 RPM, 440 V, 3 Ph 50 Hz,	5 HP, 960 RPM, 440 V, 3 Ph 50 Hz,
Feed Screw Drive Motor	3 HP, 1440 RPM, 440 V, 3 Ph 50 Hz,	3 HP, 1440 RPM, 440 V, 3 Ph 50 Hz,

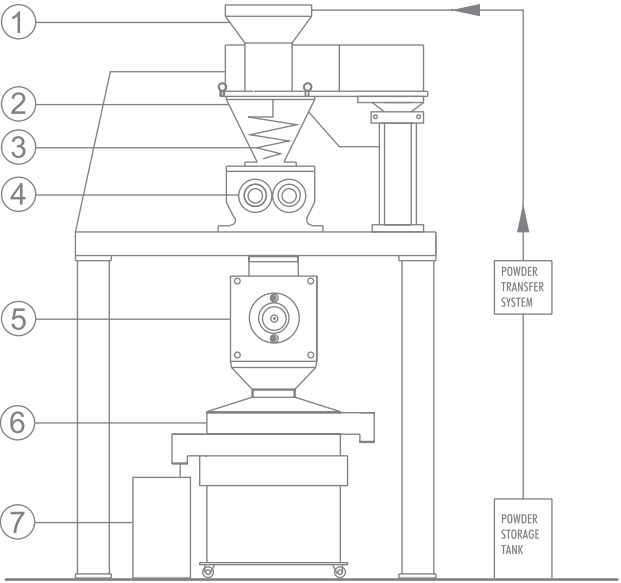
# ROLL COMPACTOR cGMP

200 / 100, 200 / 150, 200/200 & 300/300  
Plain & Water Jacketted  
Optional : Hydraulic System  
for Rear Roller



## TECHNICAL SPECIFICATIONS :

MODEL	SMRC-200/100	SMRC - 200/150	SMRC - 200/200	SMRC - 300/300
Output *	50 to 250 Kgs / hr.	50 to 350 Kg/Hour*	50 to 450 Kg/Hour*	100 to 1000 Kg/Hour*
Roll Size	Ø 200 mm X 100 mm (W)	Ø 200 mm X 150 mm Width	Ø 200 mm X 200 mm Width	Ø 300 mm X 300 mm Width
Roll Speed	6 to 25 RPM (Step Pulley drive)	6 to 22 RPM (Step Pulley drive)	6 to 22 RPM (Step Pulley drive)	6 to 22 RPM (Step Pulley drive)
Feed Screw Speed	5 to 60 RPM (Through AC Variable Frequency Drive)			
Roll Drive Motor	7.5 HP, 960 RPM, 440 V, 3 Ph 50 Hz,	10 HP / 960 RPM / 3 Phase	15 HP / 960 RPM / 3 Phase	25 HP / 960 RPM / 3 Phase
Feed Screw Drive Motor	3 HP, 1440 RPM, 440 V, 3 Ph 50 Hz,	5 HP / 1440 RPM / 3 Phase	5 HP / 1440 RPM / 3 Phase	7.5 HP /1440 RPM / 3 Phase



Also Available Online Roll Compactor...

- POWDER CHARGING HOPPER
- POWDER FEEDING HOPPER
- POWDER FEED SCREW
- COMPACTING ROLLER
- GRANULATOR
- SIFTER
- STORAGE DRUM



# ROLL COMPACTOR cGMP CANTILEVER TYPE

with Flakes Crusher & Mill or  
+ Powder Transfer System  
(Vacuum Conveying System)  
Plain & Water Jacketted  
Optional : Hydraulic System for Rear Roller

### SALIENT FEATURES :

- In Compliance with cGMP guidelines.
- Contact Parts are made of S.S. 316 except rollers.
- Very compact design available in Plain, Water Jacketed or Flamepro of Model.
- Screw is driven through AC Variable Frequency Drive. Safety slipping clutch between gearbox and feed screw.
- ELNP (Electroless Nickel Plating) or Hard chrome plated with mirror finished compacting rolls made of tools steel.
- Rolls drive through twins shaft gearbox with drive unit coupled to it using coupling, which ensures synchronization of the rolls with a steady torque loading.
- Pre-Compression chamber guides the products to roll without any slippage or leakage.
- Pre-densifier screw comprises of cylindrical or conical shape, which is well polished and made of AISI SS-316 quality material.
- The feed screw assembly can be lifted by hand-operated hydraulic pump. This facilitates ease in cleaning.
- Scraper assembly also designed to dismantle for ease of cleaning.
- A separate panel board which consist all controls and indicators of the compactor are permanently built in namely, on/off rolls, on/off feed screw, main switch, forward / reverse switch, ammeters for rolls and feed screw and emergency stop to avoid short circuit or fire hazard at the time of cleaning with water.
- Electrical interlocking between main roll drive and fixed screw drive.
- Water jacketing arrangement. (optional)
- Hydraulic power pack system for Rear Roller. (optional)
- AC Variable frequency drive for Rollers. (optional)



### TECHNICAL SPECIFICATIONS :

MODEL	SMRC-200/50	SMRC-200/75
Output *	5 to 60 Kgs / hr.	10 to 100 Kgs / hr.
Roll Size	Ø 200 mm X 50 mm (W)	Ø 200 mm X 75 mm (W)
Roll Speed	6 to 25 RPM (Step Pulley drive)	6 to 25 RPM (Step Pulley drive)
Feed Screw Speed	5 to 60 RPM (Through A.C. Drive)	5 to 60 RPM (Through A.C. Drive)
Roll Drive Motor	5 HP, 960 RPM, 440 V, 3 Ph 50 Hz,	5 HP, 960 RPM, 440 V, 3 Ph 50 Hz,
Feed Screw Drive Motor	3 HP, 1440 RPM, 440 V, 3 Ph 50 Hz,	3 HP, 1440 RPM, 440 V, 3 Ph 50 Hz,

# LAB MODEL ROLL COMPACTOR cGMP

OPTIONAL : HYDRAULIC SYSTEM FOR REAR ROLLER



with Inline Mill with VFD

### SALIENT FEATURES :

- To increase the bulk density
- To achieve better granulation & sieve analysis
- To reduce process cost and improve the end product quality
- Free flowing granules
- Dust free granules to facilitates handling
- Compact granules to reduce pack size
- Granules to fill in smaller capsule
- Granules for Tableting process

### TECHNICAL SPECIFICATIONS :

Model	SMRC-100/25	SMRC - 200/25
Working Capacity	2 to 5 Kgs./Hour	Up to 5 Kg/Hour
Roll Speed	2-29 RPM Variable	1 - 30 RPM
Screw Speed	5-86 RPM Variable	1 - 100 RPM
Roller Motor	1.5 Hp / 3 Phase	3 HP / 3 Phase
Feeder Motor	1 Hp / 3 Phase	2 HP / 3 Phase



Corrugated Roller Flakes / Chips



Plain Roller



Straight Knurling



Diamond Knurling





# SINGLE SIDED ROTARY TABLETING MACHINE cGMP



### SALIENT FEATURES :

- In compliance with cGMP guidelines
- Turret of SG IRON 500/7 Graded Casting
- Robust with high quality Engineering
- Small batch production
- Safe/Simple to operate and easy to maintain
- Higher Turret RPM upto 40 (16 & 20 Station)
- Main Moter AC Variable Frequency Drive (optional)
- Force Feeder (optional)
- Aluminum covers for Turret teeth



### TECHNICAL SPECIFICATIONS :

Model	SMD-16	SMD-20	SM - 3H - 12
Tooling	D	D	SPECIAL (Bolus)
No. of Station	16	20	12
Maximum Operating Pressure	10 Tons	10 Tons	12 Tons
Maximum Tablet Diameter	23 mm (25 mm on Demand)	23 mm (25 mm on Demand)	40 mm
Maximum Depth of fill	20 mm	20 mm	30 mm
Output Tablets /Hour *	14,400 to 38,400	18,000 to 48,000	10,800 & 15,840
Electric Motor	2 Hp / 960 RPM	2 Hp / 960 RPM	5 Hp / 1440 RPM



Also Available  
Standard Model

# DOUBLE SIDED ROTARY TABLETING MACHINE cGMP

## HIGH SPEED ROTARY TABLET PRESS



Also Available  
Standard Model



### SALIENT FEATURES :

- Robust with high quality Engineering
- Turret of SG IRON 500/7 Graded Casting
- Medium batch production
- Maximum output upto 216000 tablets per hour (for 45 Station)
- Tablets of upto 23 mm Diameter for 'D' Tooling and 16 mm Diameter for 'B' Tooling
- Safe / Simple to operate and easy to maintain
- Designed as per cGMP standards



### TECHNICAL SPECIFICATIONS :

Type	SMB4 - D - 27	SMB4 - 35	SMB4 - 45
No. of station	27	35	45
Type of tooling	D	B	BB
Output tablets / hour * (Single Layer)	58,320 to 129,000	75,600 to 168,000	97,600 to 216,000
Maximum operating pressure (main)	10 Tons	6.5 Tons	6.5 Tons
Maximum tablet diameter	23 mm (25 mm on Demand)	16 mm	11.1 mm
Maximum depth of fill	20 mm	17.5 mm	17.5 mm
Upper punch penetration	1.5 to 8 mm		
Main electric motor	3.70 kW / 5hp, 1440 RPM 415 V, 50 Hz., 3Phase		
Powder Force Feeder Motor (Optional)	0.75 kW/1.0 hp , 1440 RPM, 415V, 3 Phase, 50Hz		
Overall dimensions (cm)	105 x 106 x 181 H		
Case Dimension (cm)	130 x 131 x 200 H		
Net weight	1490 kg		
Gross Weight	1680 kg		



SAIPRESS I cGMP

HIGH SPEED ROTARY TABLET PRESS



SALIENT FEATURES :

- Tablet Press with outstanding engineering, performance and reliability.
- Turret of SG IRON 500/7 Graded Casting
- Quality tablet production at high speed.
- Double Sided Tablet Press in compliance with cGMP Guidelines
- Higher Output up to 216,000 tablets per hour (for 45 Station)
- Simple and convenient operation, offering operator Protection, cleanliness and ease of maintenance.
- All the tablet parameters can be fine tuned during the operation of the machine from outside the tableting zone.
- Three piece Turret with Stainless Steel 316 L Die Plate (optional)
- Gravity Feeding System ( Feed Frame)
- AC Variable Frequency Drive for Main Motor
- Easy outside controls.
- Auto lubrication pump.



TECHNICAL SPECIFICATIONS :

Type	SMB4 - D - 27	SMB4 - 35	SMB4 - 45
No. of station	27	35	45
Type of tooling	D	B	BB
Output tablets / hour * (Single Layer)	58,320 to 129,000	75,600 to 168,000	97,600 to 216,000
Maximum operating pressure (main)	10 Tons	6.5 Tons	6.5 Tons
Maximum tablet diameter	23 mm (25 mm on Demand)	16 mm	11.1 mm
Maximum depth of fill	20 mm	17.5 mm	17.5 mm
Upper punch penetration	1.5 to 8 mm		
Main electric motor	3.70 kW / 5hp, 1440 RPM 415 V, 50 Hz., 3Phase		
Powder Force Feeder Motor (Optional)	0.75 kW/1.0 hp , 1440 RPM, 415V, 3 Phase, 50Hz		
Overall dimensions (cm)	105 x 106 x 181 H		
Case Dimension (cm)	130 x 131 x 200 H		
Net weight	1490 kg		
Gross Weight	1680 kg		

SAIPRESS II cGMP

HIGH SPEED ROTARY TABLET PRESS



SALIENT FEATURES :

- Tablet Press with outstanding engineering, performance and reliability.
- Turret of SG IRON 500/7 Graded Casting
- Quality tablet production at high speed.
- Double Sided Tablet Press in compliance with cGMP Guidelines
- Higher Output up to 216,000 tablets per hour (for 45 Station)
- Simple and convenient operation, offering operator Protection, cleanliness and ease of maintenance.
- All the tablet parameters can be fine tuned during the operation of the machine from outside the tableting zone.
- Three piece Turret with Stainless Steel 316 L Die Plate (optional)
- Gravity Feeding System ( Feed Frame)
- AC Variable Frequency Drive for Main Motor
- Easy outside controls.
- Auto lubrication pump.



TECHNICAL SPECIFICATIONS :

Type	SPD II - 37	SPD II - 45	SPD II - 61
No. of stations	37	45	61
Type of tooling	D	B	BB
Output tablets/hour *	53,280 to 222,000	64,800 to 270,000	87,840 to 366,000
Max. operating pressure (main)	10 Tons	6.5 Tons	6.5 Tons
Max. tablet diameter	23 mm (25mm on Demand)	16 mm	11.1 mm
Max. depth of fill	20 mm	17 mm	17 mm
Upper punch penetration	1.5 to 8 mm		
Power (total)	9 kW / 12 hp		
Main electric motor	7.5 kW / 10 hp, 1440 RPM, 415 V, 50 Hz, 3 Phase		
Force feeder motor (2 Nos.)	0.75 kW / 1 hp		
Overall dimensions (cm)	147 X 140 X 187 H		
Case dimension (cm)	168 X 183 X 224 H		
Net weight	2500 kg		
Gross Weight	2835 kg		





# SAIPRESS IV cGMP

## HIGH SPEED ROTARY TABLET PRESS



### SALIENT FEATURES :

- In Compliance with cGMP Guidelines
- Turret of SG IRON 500/7 Graded Casting
- High Speed Double Sided Rotary Tablet Press with Pre-Compression Facility
- Maximum Output upto 540000 tablets per hour (for 75 Station)
- Easy Accessibility for Quick Cleaning and Product Conversion
- Improved Tablet Quality; Handles Difficult Products Easily due to
- Pre-Compression Facility
- Precise Weight Control
- Ensures Hygienic Production Conditions and Operator Safety
- All Tablet Parameters can be fine tuned during operations from outside the tableting zone
- Force Feeding System
- Hydraulic Power-Pack System
- Auto Lubrication system
- Upper punch penetration system
- Safety interlocking for upper guards
- Front and Easy Outside Controls for machine and tablet parameters
- Three Piece Turret with Stainless Steel 316 L die-plate



### TECHNICAL SPECIFICATIONS :

Type	SPD IV - 45		SPD IV - 61	SPD IV - 75
No. of stations	45		61	75
Type of tooling	D		B	BB
Output tablets / hrs. Max. 60 RPM	64,800 to 324,000		87,840 to 439,200	108,000 to 540,000
Max. operating pressure (main)	100 kN		65 kN	65 kN
Max. operating pressure (pre - crompression)	10 kN		10 kN	10 kN
Max. tablet diameter	23 mm (25mm on Demand)		16 mm	11.1 mm
Max. depth of fill	20 mm		17 mm	17 mm
Upper punch penetration	1.5 to 8 mm			
Power (total)	12.75 kW / 17 hp			
Main electric motor	11.25 kW / 15 hp			
Force feeder motor (2 Nos.)	0.75 kW / 1 hp			
Overall dimensions (c m) (Guard Close)	167 X 178 X 209 H			
Net weight & Grass Weight	3750 kg (Nw) & 4100 Kg (Gw)			

# SAIPRESS FC SINGLE SIDED

## ROTARY TABLETING MACHINE cGMP

### ALSO AVAILABLE WITH PRE-COMPRESSSION



### TECHNICAL SPECIFICATIONS :

MODEL	SMD-16-FC	SMD-20-FC	SMD-26-FC	SMD-32-FC
No. of Stations	16	20	26	32
Type of Tooling	D	D	B	BB
Output Tablets / Hour *	14,400 to 40,320	18,000 to 50,400	23,400 to 65,520	28,800 to 80,640
Max. Op. Pressure (Tons)	10	10	6.5	6.5
Max. Tablet Diameter (mm)	23 (25 on demand)	23 (25 on demand)	16	11.1
Max. Depth of Fill (mm)	20	20	17.5	17.5
Main Electric Motor	2 HP	2 HP	2 HP	2 HP

# SCT - I SINGLE SIDED ROTARY

## TABLETING MACHINE cGMP



### SALIENT FEATURES :

- With color touch screen computer interface with most modern software
- In compliance with cGMP guidelines
- Center drive system built-in gear box
- Single Rotary Tablet Press with Bi-Layer facility
- With motorized Pre-Compression of 10 Ton (100 KN)
- With motorized Main-Compression of 10 Ton (100 KN)
- With motorized die fill adjustment
- Main Motor & Force Feeder (optional) with AC Variable Frequency Drive
- With Load Cell for Pre-Compression and Main Compression.
- Maximum Turret speed up to 35 rpm
- Bi-Layer with feed frame mechanism optional (Need to select this option during machine built up only)
- No oil Lubrication required.
- No Hydraulics. Complete freedom from oil leakage
- All upper guard with interlock
- Lower guard with Stainless Steel 304 well polished & upper guards with acyclic material
- With built-in gravity feeder (feed frame) for single layer also Force Feeder - Optional
- With Machine Start up & Stop rejection
- AWC (Auto weight control) with Computerized Force Monitoring & Control - Optional





# SAIPRESS VI cGMP

## HIGH SPEED DOUBLE SIDED ROTARY TABLET PRESSES

with Interchangeable Turret Facility  
(with CFC & AWC)



### SALIENT FEATURES :

- High Speed Double Sided Rotary Tablet Press  
Available with 51 Station "D" Tooling, 65 Station "B" Tooling & 81 Station "BB" Tooling
- Ultrafast<sup>1</sup> - Interchangeable Turret Design/Facility
- Fully Automatic Compaction Force Monitoring & Control  
AWC-AFR System - 21 CFR part 11 Compliance
- 15" Colour Touch Screen IPC (Industrial PC) with SCADA Operating system
- Number of recipes storage & recall facility
- Pre-Compression Main Compression Rollers -Servo motorized Control
- 3-piece Turret with SS 316L Die plate and Upper & Lower part Electro less Nickel Plating
- Super thick transparent upper guard designed especially for sound reduction and operator safety
- Bi-layer Operation Facility - ease of setting and separate first Layer sampling available
- Ease of operation with sensitive touch with visual indication of security messages
- Batch data are reordered/stored automatically and will be downloaded.
- The data/information of product can be recorded & saved under a file name
- Equal Pre & Main Compression Force of 100 kN
- Force Feeder System (3 Paddle) with zero clearance design
- Three-way Tablet Discharge Chute (Good, Reject & Sample)
- Depth of Die fill -Servo motorized Control
- Load-cell Available at Pre-Compression & Main Compression
- Data can be printed which displayed, recorded & stored
- Auto Tablet Sampling
- Online continues Compaction Force bar graph
- Availability of Online data Integration system
- Multi-Level Password Protection
- Contact parts Stainless Steel 316L quality
- Auto lubrication System
- Ejection Force Mechanism System
- Online after sales service support
- Three way password system
- Individual tablets auto rejection /beyond permissible weight limit
- Individual Punch Force data available
- Recipes data storage, monitoring & control with data recall



### TECHNICAL SPECIFICATIONS :

MODEL	SPD VI-51	SPD VI-65	SPD VI-81
No of Station	51	65	81
Type of Tooling	D	B	BB
Turret Exchange / Replaceable Facility	Yes	Yes	Yes
Output Tablets/hour (For Single Layer only)	73,440 to 489,600	93,600 to 624,000	116,640 to 777,600
Maximum Operating Pressure (Main)	100 kN	65 kN	65 kN
Max. Operating Pressure (Pre-Compression)	100 kN	65 kN	65 kN
Max. Tablet Diameter	23 mm (25mm on demand)	16 mm	11 mm
Maximum Depth of Fill	20 mm	17 mm	17 mm
Upper Punch Entry	2 to 4 mm	2 to 4 mm	2 to 4 mm
Main Electric Motor	15 HP / 415 V / 3 Phase	15 HP/415V/ 3 Phase	15 HP/415V/ 3 Phase

## TABLET DE-DUSTING MACHINE



### TECHNICAL SPECIFICATIONS :

MODEL	SM-100
Output (for 8mm tablet)*	5,000 to 2,70,000 tablet / Hour
Electric Motor	0.25 HP. / 1440 RPM / 3 Phase
Max. Tablet Diameter	25 mm (40mm on Demand)
Min. Tablet Diameter	5 mm
Net Weight	70 kg

## TABLET DE-DUSTING MACHINE ELEVATING TYPE



### TECHNICAL SPECIFICATIONS :

MODEL	SM-500
Max. Tablet Diameter	Up to 40 mm
Output *	1,74,000 Tablets / Hour for 8mm diameterer Tablet
Power Supply	0.5 HP, Single Phase, AC

## DUST EXTRACTOR MACHINE



### TECHNICAL SPECIFICATIONS :

MODEL	SM-DE-150	SM-DE-300
Fan Volume (CFM)	150 CFM (250 m3/Hour)	300 CFM (500 m3/Hour)
Filtration Area	0.84 m2	1.34 m2
Dust Storage Capacity	25 Liters	40 Liters
Electric Motor	1 HP / 3 Phase	1 HP / 3 Phase

## LAB MODEL TABLET PRESS



### TECHNICAL SPECIFICATIONS :

Type	LAB - 8	LAB - 10	LAB - 12 MT
No. of Station	8	10	12
Type of tooling	D	B	D,B & BB
Output tablets / hour *	2,000 to 14,400	2,000 to 18,000	2,000 to 7,200
Maximum Operating Pressure	6 Ton	6 Ton	6 Ton
Maximum Operating Pre -Pressure	1 Ton	1 Ton	1 Ton
Maximum tablet diameter	19 mm(23mm caplet)	16 mm	19 mm(23mm caplet)
Maximum depth of fill	20.5 mm	17.5 mm	20.5 mm
Upper punch penetration	2 to 6 mm	2 to 6 mm	2 to 6 mm
Power	2 Hp / 1440 RPM	2 Hp / 1440 RPM	2 Hp / 1440 RPM
Gross weight (kg)	400	400	400
Over all dimensions (mm)	840 x 635 x 1200 H	840 x 635 x 1200 H	840 x 635 x 1200 H

## LAB MODEL SIFTER

### TECHNICAL SPECIFICATIONS :

MODEL	SMSM 12"
Screens	SS 316
Screen Diameter	300 mm
Capacity/Hour *	02 to 10 Kg
Electric Motor	0.25 HP / 3 Phase



## LAB MODEL MULTI MILL



### TECHNICAL SPECIFICATIONS :

MODEL	SM MM 50"
Output *	2 to 10 Kg/Hour
Rotor Assembly Diameter	156 mm. Approx.
Rotor Speed	750 / 1500 / 2300 / 3000 RPM
Beaters	12 Nos. with knife and impact edges and 2 Nos. scraper blades
Screen dimension	Inner Dim. 168 mm./ Height 88 mm
Motor	0.5 HP / 1440 RPM / 3 Phase
Starter	"DOL" with reversible switch
Material charging height	1450 ± 5 mm. 955 ± 5 mm.
Material discharging height	750 ± 5 mm. 450 ± 5 mm.



# LAB MODEL RAPID MIXER GRANULATOR



## TECHNICAL SPECIFICATIONS :

MODEL	SMRMG 10	SMRMG 25	SMRMG 50
Gross Volume Liter	10	25	50
Working Volume Liter	8	20	40
Mixer Motor (HP)	1.5	5	7.5
Chopper Motor (HP)	1	2	3
Compressed Air Pressure	6 to 8 (bar)		
Power Supply	AC 415 V ± 10%, 3 Phase, AC		



With Wet Cone Mill with VFD

# LAB MODEL FLUID BED DRYER



## TECHNICAL SPECIFICATIONS :

MODEL	SMFBD - 05	SMFBD - 10	
Container Gross Volume Liters.	46	71	142
Maximum Batch Capacity (0.5bd) Kg.	10 to 15	20 to 30	40 to 60
Blower Motor HP**	5	7.5	10
Air Flow (CFM) ± 10%	430	706	1060
Steam Consumption (kg /hour)	30	50	80
Electric Heater (KW)	20	20	36
Steam Pressure (kg / cm2)	3.5	3.5	3.5
Compressed Air Pressure (bar)	6	6	6
Drying temp (°C)	35-80	35-80	35-80
Power Supply	415 V, ± 10%, 3 Phase, AC		

# LAB MODEL BLENDER



## TECHNICAL SPECIFICATIONS :

MODEL	SMOB	SMOB	SMOB	SMOB	SMOB
	01	02	05	10	25
Gross Capacity (Liter)	01	02	05	10	25
Working Capacity (Liter)	0.7	1.4	3.5	7	17.5
Machine RPM (Max.)	24	24	24	24	24
Discharge Port Diameter (Inch)				3	3
Main Drive Motor (HP)	0.5	0.5	0.5	1	1

# DIES & PUNCHES

**\*\* Also Punches & Dies available with Multiple Tips / RS II or any Tablet Press Machine.**



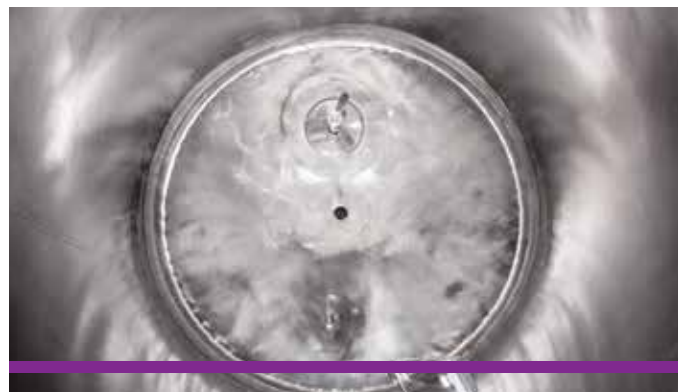


# LIQUID SYRUP MANUFACTURING PLANT



## APPLICATION :

Orals  
Liquids  
Suspensions  
Cough Syrups  
Drop Solutions  
Expectorants  
Antacid Suspensions



## SALIENT FEATURES :

- Design of process, equipment's and transfer piping
- Transfer systems for sugar/ Glucose through a vacuum system
- Sugar preparation system with jacketed, insulated and clad vessel with bottom entry propeller mixer for vigorous mixing
- In-line high shear mixer for suspensions
- Capable Filtration System for the clear / suspension syrups
- Sanitary piping systems with butterfly valves
- Stainless steel operating platform with staircase and railing
- EHEDG / 3A approved twin lobe pumps
- CIP & SIP System for cleaning & sanitization of the system
- 21 CFR Part 11 compliant PLC / SCADA based automation system
- System Qualification Documents like IQ, DQ, FAT, & OQ Protocols
- Highly experienced team for installation and validation support

# OINTMENT MANUFACTURING PLANT

Capacity : 5 – 10,000 Kgs.



  
**SAIMACH**<sup>TM</sup>  
pharmatech pvt. ltd.  
sales@saimach.in | www.saimach.in

The ointment manufacturing plant is used by the pharmaceutical & cosmetic industries for the production of lotions, toothpaste and Saimach is the leading manufacturer of it.

The Ointment Manufacturing Plants is a universal mixing system developed for the production of emulsions and suspensions in the pharmaceutical industry in particular, but also in cosmetics industries.

Our systems are fully optimized for delivering the best performance with reduced life-cycle costs.

## APPLICATION :

### PHARMACEUTICALS :

Sterile & Non-Sterile Ointment, Cream, Gel, Lotion, Medicated toothpaste

### COSMETIC :

Lotions, Cream, Shaving Creams, sun Cream gels, Hair Dyes creams, Shampoos, Conditioners, Tooth Paste, Bath Additives, Footcare Products and Many more.