

# FORMULATIONS CRAMS APIS

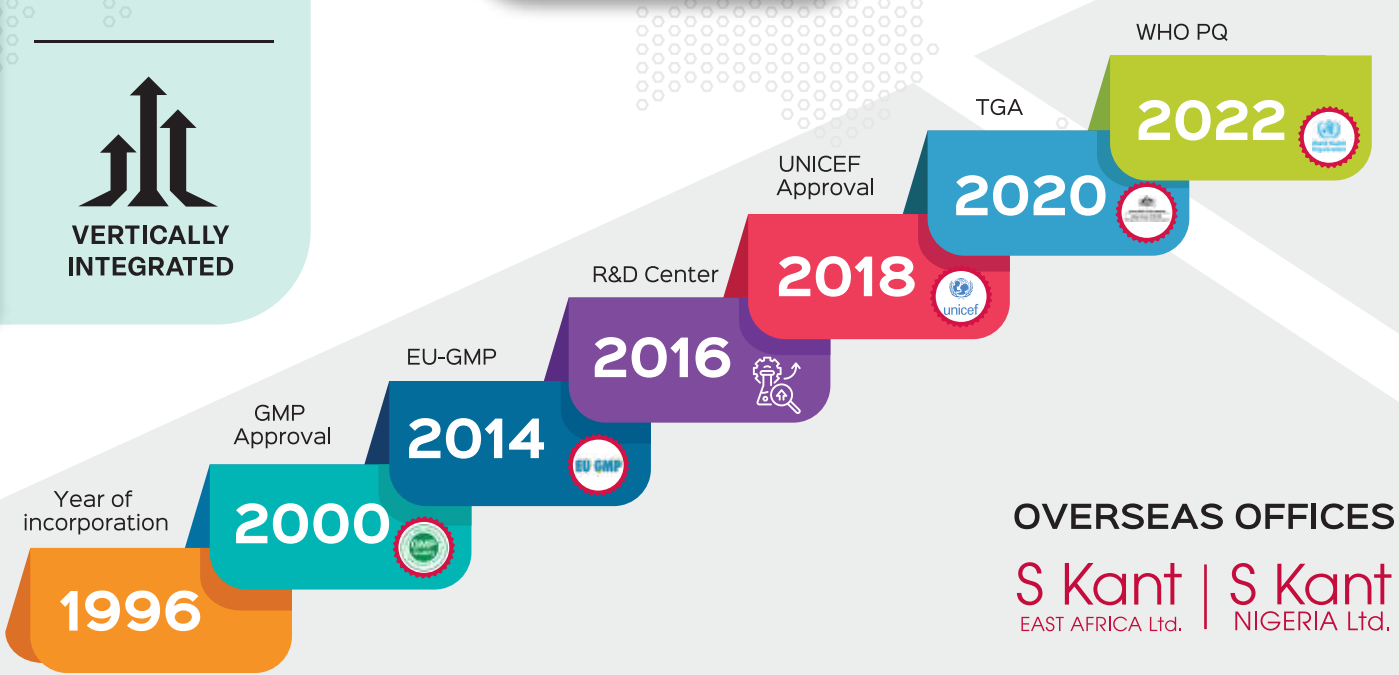


25 YEARS OF  
EXCELLENCE

**90+**  
COUNTRIES  
SERVED



VERTICALLY  
INTEGRATED



## OVERSEAS OFFICES

**S Kant** | **S Kant**  
EAST AFRICA Ltd. | NIGERIA Ltd.

**EU GMP**



## DOSAGE FORMS

# 6



**TABLETS**  
3.5 Billion units



**CAPSULES**  
600 Mil Units



**DRY POWDERS FOR ORALS**  
20 Mil Units



**LIQUID ORALS**  
75 Mil Bottles



**TOPICALS**  
100 Mil tubes



**ORAL GELS**  
100 Mil tubes

## CDMO / CMO



**Manufacturing Partner For**  
Europe, UK, Canada, South Africa, Australia.



**Integrated R&D Center**  
for product & analytical  
Method Development & feasibility



**FMD Compliance**  
[SER / ATD]



**Dedicated Tech Transfer Team**  
consisting of subject matter experts.



**Stability Chambers**  
for all ICH Zones.

## TECHNOLOGY TRANSFER

**ORAL SOLIDS**  
100,000 Units

**TOPICAL PREPARATIONS**  
200 kg

### ORAL LIQUID

**Syrup**  
300 Litres

**Suspension**  
500 Litres

## KNOWLEDGE BANK

- In- House Regulatory Team
- Industry Experts for IPR & BE Studies

RESEARCH

EXHIBIT / VALIDATION  
MANUFACTURING

CTD FILING

COMMERCIAL  
SUPPLY



## R & D

- Independent State-of-the-Art R&D Center of 709 SQ.M for development of finished dosage forms.
- Knowledge bank of 60+ Scientists



### Formulation Development

- Oral Solids: Tablet | Capsule | Dry Powder for oral.
- Oral Liquids: Clear Syrup | Suspensions Topicals Preparations: Cream | Ointment | Gel (Experience in development of dispersible, extended release & taste masked formulations.)



### Analytical Development

- Sophisticated Analytical Instruments. Diffusion cell for IVRT Testing & Viscometers for Oral Liquid & Topical Preparations.
- Stability Chambers (Walk-in type) for all ICH Zones & Photostability .



### Packing Development

- In house team for evaluation of RLD Primary Packing Material & new packing material development.
- Artwork team well acquainted with regulatory requirements such as FMD Compliance, GS1, Pharma code, etc.



### Regulatory Affairs

- In House team for compilation of CTD Dossiers.
- Tie-up with industry experts for IPR, eCTD preparation & BE studies.

## BACKWARD INTEGRATION

DEDICATED PILOT PLANT / MFG LINE FOR SCALE UP / TECH TRANSFER / EXHIBIT BATCHES.

### APIs

- Artemisinin - based Salts
- Artemether / Dihydroartemisinin / Artesunate
- Lumefantrine
- Silver sulfadiazine

### Excipients

- Metallic Stearates (Magnesium, Calcium, Zinc)

## KEY BRANDS

**SKDERM**

**FUZI-SK**

**LARTEM**

**Supyra**

**MUCOLEX**

**VitamaKS**

**SKAZI**

**GO! GEL**

**SILVERKANT**

**Fungarin**  
Oral Gel

**BACTROKANT**

**Lariact**

**OMESK**

**DAWAKOF**

**AMINOVIT**

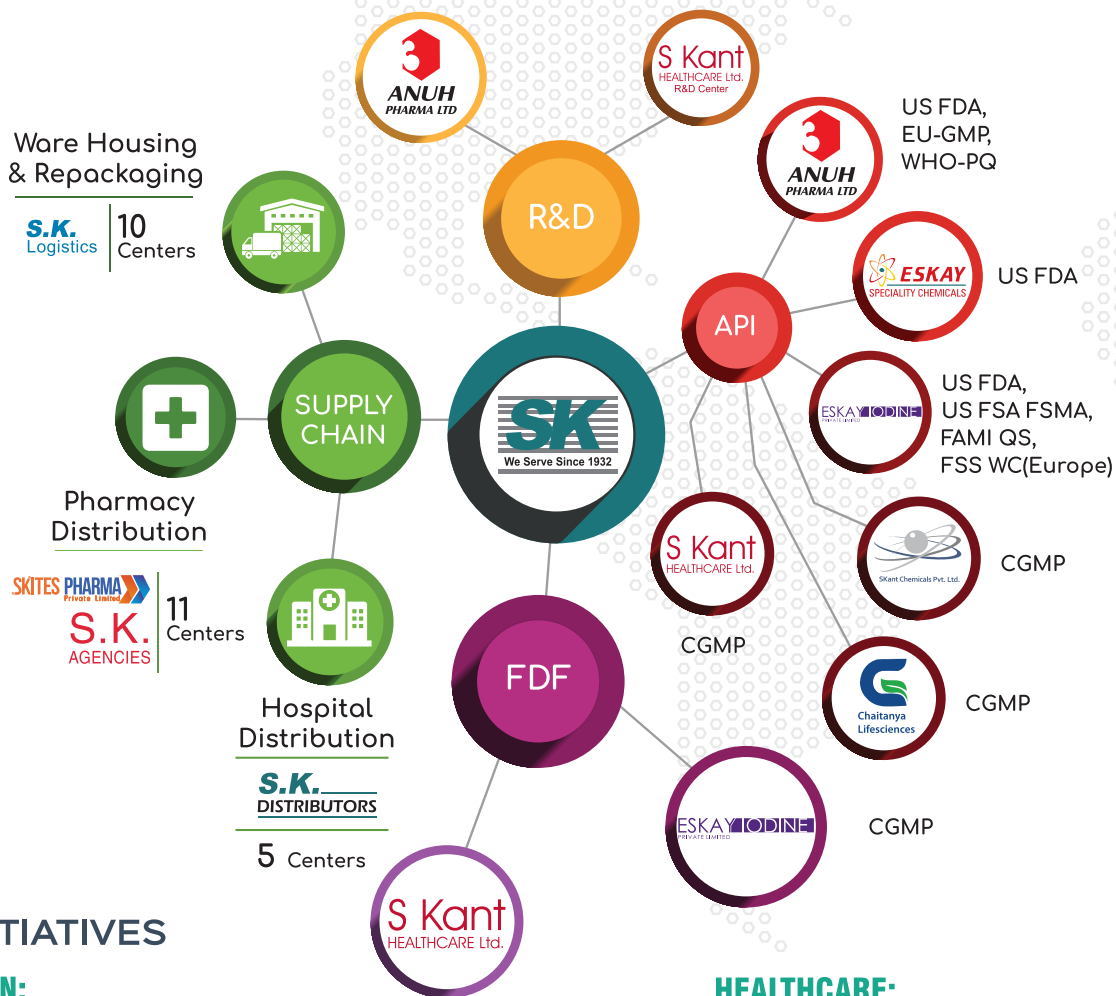
**NYSKA-P**

**GLIKANT**

**D-ABSORB**



# SK GROUP COMPANIES



## CSR INITIATIVES

### EDUCATION:

- SK Convention Center
- SK Balmandir ( Playschool)
- SK Vocational Classes
- SK College of Business Management
- SK School of Business Management
- SK College of Science & Technology

### HEALTHCARE:

- SK Diabetic Retinopathy Care Center
- SK Sumangal Medical Center
- SK Blood Bank

### ENVIRONMENT:

- Surya van
- 2.3 Mw solar power plant

**QUALITY HAS BEEN THE ONLY PLAN AT SK SINCE 1932**