

Passion for a Healthy Future



Look into our world

Passion for a Healthy Future



Welcome at Expert Pharmaceuticals Pvt. Ltd.



Introductions of Expert

Heritage

- ✦ **Expert Pharmaceuticals, Established 5th Sept 2013 in Ahmedabad**
- ✦ **Promoters – Khambhatta Family.**
- ✦ **The group is initially engaged in contract manufacturing and gradually increased its activity span by introducing its own product for pharma solutions.**
- ✦ **The group has presence in manufacturing pharmaceutical process equipment for life-sciences industry since more than 50 years.**
- ✦ **Well versed in pharmaceutical formulations industry.**
- ✦ **The company is planning to handle contract manufacturing of International market for Granules, Tablets & other Solid Oral Dosage Form.**

*Introductions
Of
Expert*

- Vision Of Expert
 - E :-EMPOWER
 - X: -XYSTUS (Facility)
 - P:- PRODUCT
 - E:-EFFICACY
 - R:-REGULATORY
 - T:-THEORY
- Passion for a healthy future by empower of xystus (facility) for product efficacy with compliance of regulatory theory.

Passion for a Healthy Future



*Introductions
Of
Expert*

E For EMPOWER



Passion for a Healthy Future

*Introductions
Of
Expert*

X For XYSTUS (Facility)



Passion for a Healthy Future



*Introductions
Of
Expert*

P For PRODUCT



Passion for a Healthy Future



*Introductions
Of
Expert*

E For EFFICACY



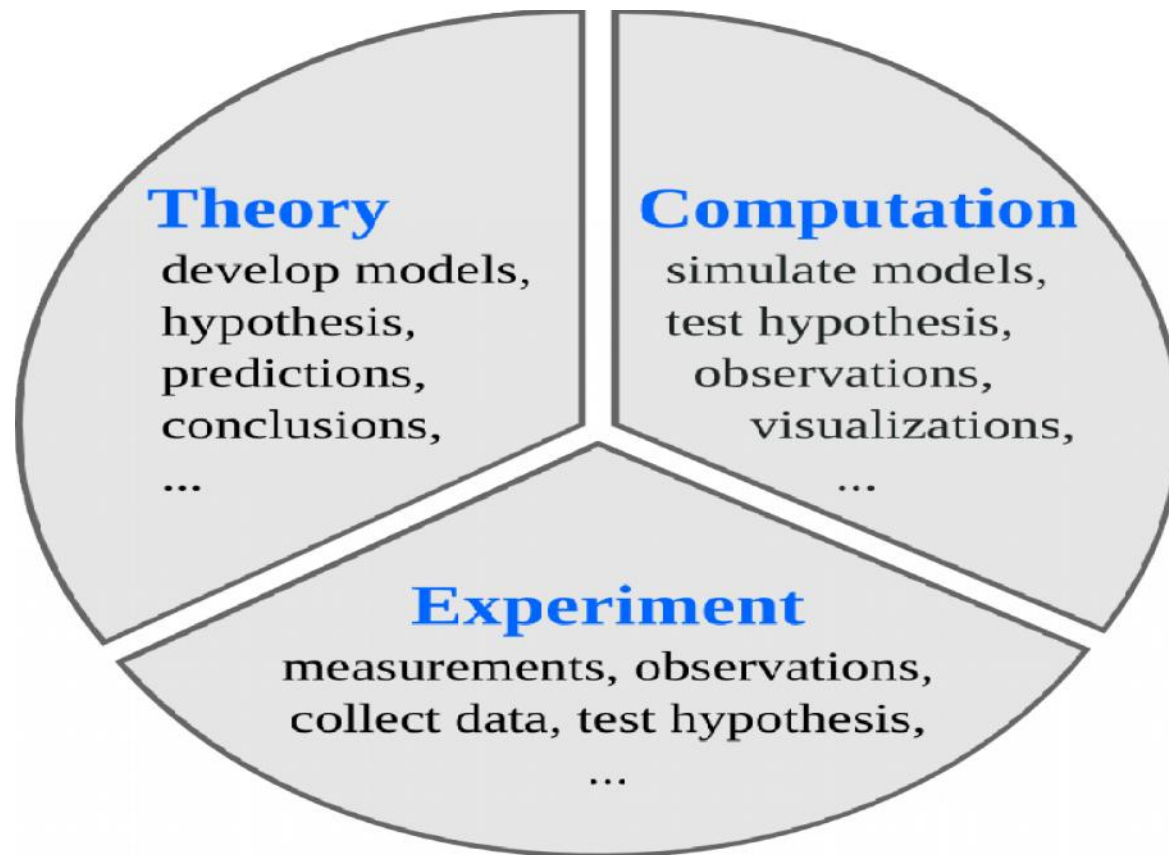
Introductions
Of
Expert

R For REGULATORY



Introductions
Of
Expert

T For Theory



Mission

Quality Policy

We at Expert Pharmaceuticals Pvt. Ltd. maintain the highest standards of quality; the product shall meet relevant internal and pharmacopoeia standards and the statutory requirements. In addition, the company shall ensure that all the steps involved in the design, development and manufacture of a product lead to the intended level of quality performance in the market. This commitment to quality require us to ensure that our facility is geared up to provide the right environment, that our operations procedure & products are under specified conditions, that our personnel are trained and quality conscious, that our products are designed with built-in quality, that our packaging provides the requisite security and cosmetic appeal and that our products provide complete customer satisfaction.

Facility View

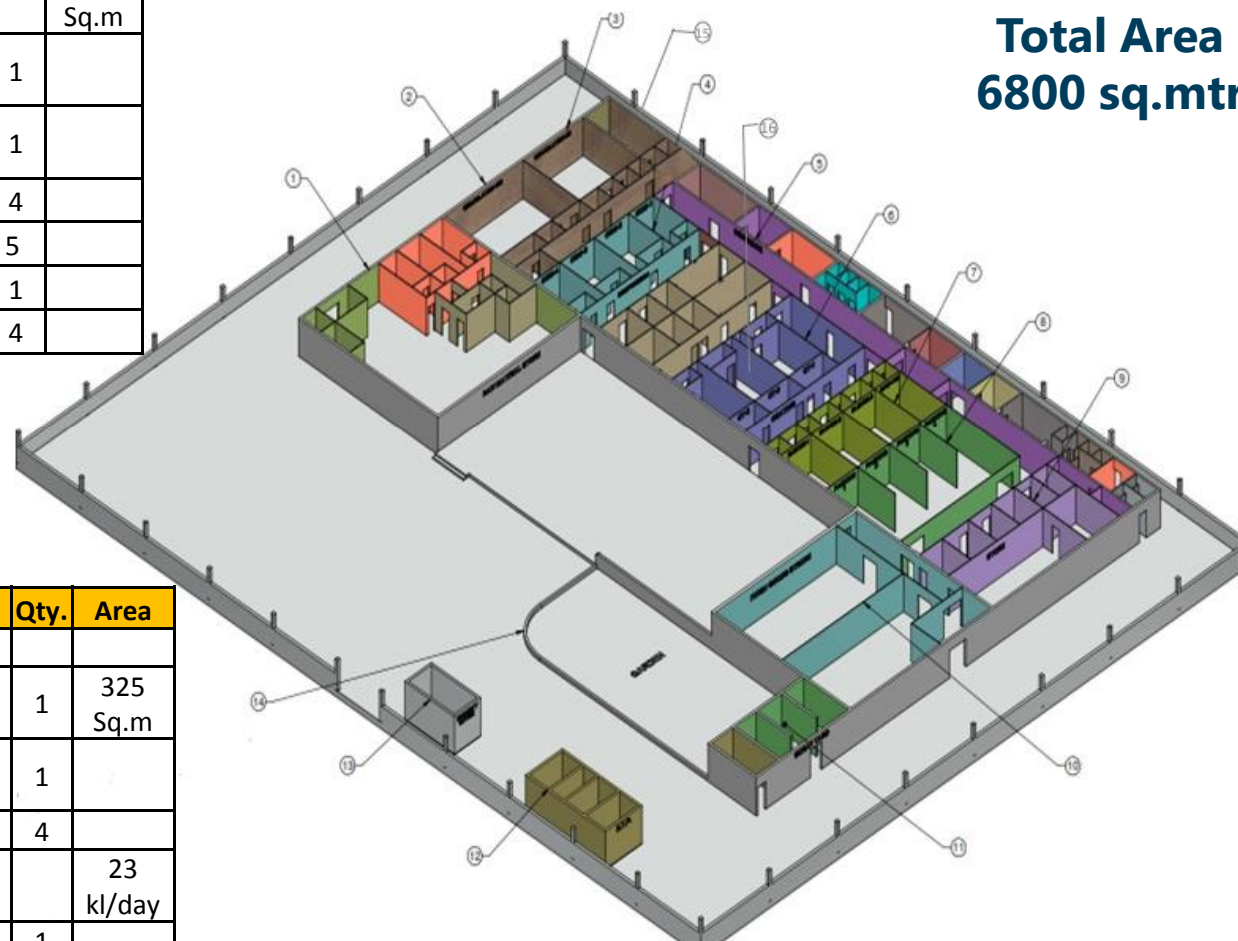


A State -of -the -Art facility in 6800 Sq. mtrs for Solid Dosage mainly for tablet section having capacity of 720 tones of granules and 744 million tablets considering average weight of 900 mg yearly at Moraiya , Ahmedabad

Site Layout

Sr.	Discription	Qty.	Area
1	Raw material		325 Sq.m
2	Granulation-120	1	
3	Granulation-400	1	
4	Compression	4	
5	Corridor	5	
6	Coating	1	
7	blister	4	

Sr.	Discription	Qty.	Area
8	Packing		
9	Store	1	325 Sq.m
10	Finish Good Store	1	
11	Scrap Yard	4	
12	ETP		23 kl/day
13	Security Office	1	
14	Garden	2	
15	Blending Room-400	1	
16	Capsule	2	



**Total Area
6800 sq.mtr**

Personnel

Introduction of HR Manual

The specific policies that follow promote the philosophy of EXPERT PHARMACEUTICALS PVT. LTD. with regard to standards of excellence; terms of employment; employee development; and employee services.

- Employing talented individuals whose creativity and imagination will support and contribute to achieving the Company's business and quality objectives.
- Communicating Company standards and expectations in all aspects of employment including performance.
- Valuing diversity, and assure equal employment opportunity and a workplace where relationships are based on mutual respect.
- Treating all staff, workers, contractors and customers in a professional, non-discriminatory manner.
- Providing safe, effective working conditions, and. providing competitive terms and conditions in our workplace market

[Managing Director]

Personnel

EMPLOYING STAFF

- * Position Creation Policy
- * Recruitment and Selection Policy
- * Background Checkup Policy
- * Joining Document Policy
- * Resignation and Full & Final Settlement Policy
- * Farewell Policy
- * Termination Policy
- * Induction Policy and Checklist
- * Assets Policy
- * Mobile Policy

Personnel

MANAGING EMPLOYEE PERFORMANCE

- * Time Management and Working Hours Policy
- * Indiscipline and Misconduct Policy
- * No Gift Policy
- * Controlling Absence Policy
- * Capability Procedure
- * Performance Appraisal Policy

Personnel

DEALING WITH EMPLOYEE CONCERNS

- * Grievance Procedure[Complain, Dispute Solution and Record]
- * Prevention of Bullying and Harassment at Work
- * "Vigil Mechanism" Policy

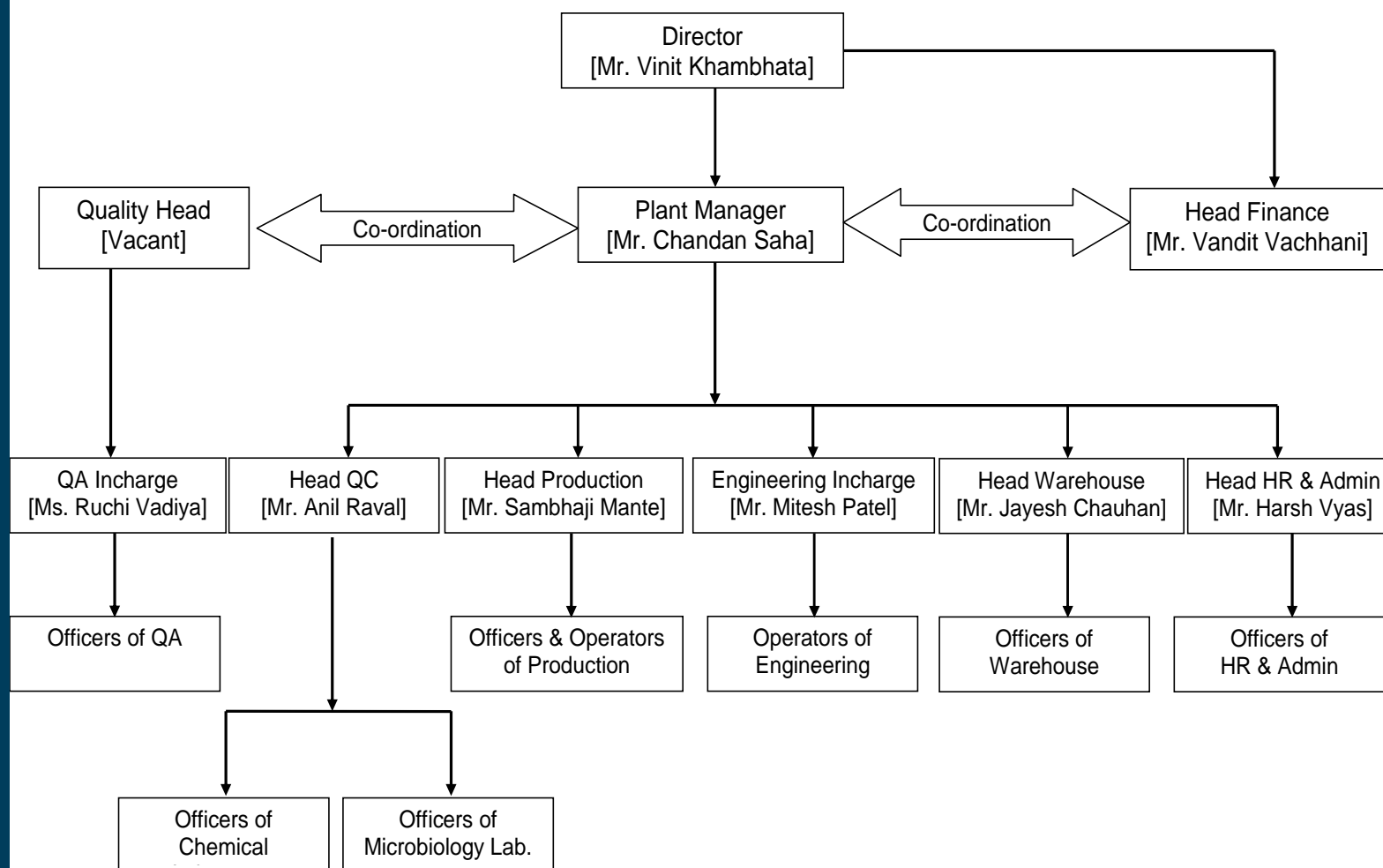
Personnel

SUPPORTING OUR STAFF IN THE WORKPLACE

- * Equality Policy
- * Transport Policy
- * Uniform Policy
- * Leave Policy
- * National & Festival Holiday Policy
- * Compensatory off Policy
- * Extra Good Work Policy
- * Staff Imprest Amount Procedure
- * Travel Policy
- * Award and Appreciations
- * Health and Safety Policy
- * Loan Policy
- * Salary Advance Policy
- * Marriage and Birthday Policy

Personnel

Expert Pharmaceuticals Private Limited Organogram



**Critical
Utility**

Utility

Boiler

**Air Compressor
Oil Free**

Screw Chiller

Cooling Tower

Make

Thermax (2 Nos.)

**Atlas Copco
Kaishan**

Trane

Varun

Capacity

**850 kg / hr &
750 kg /hr**

**130 CFM
90 CFM**

200 TR

300 TR

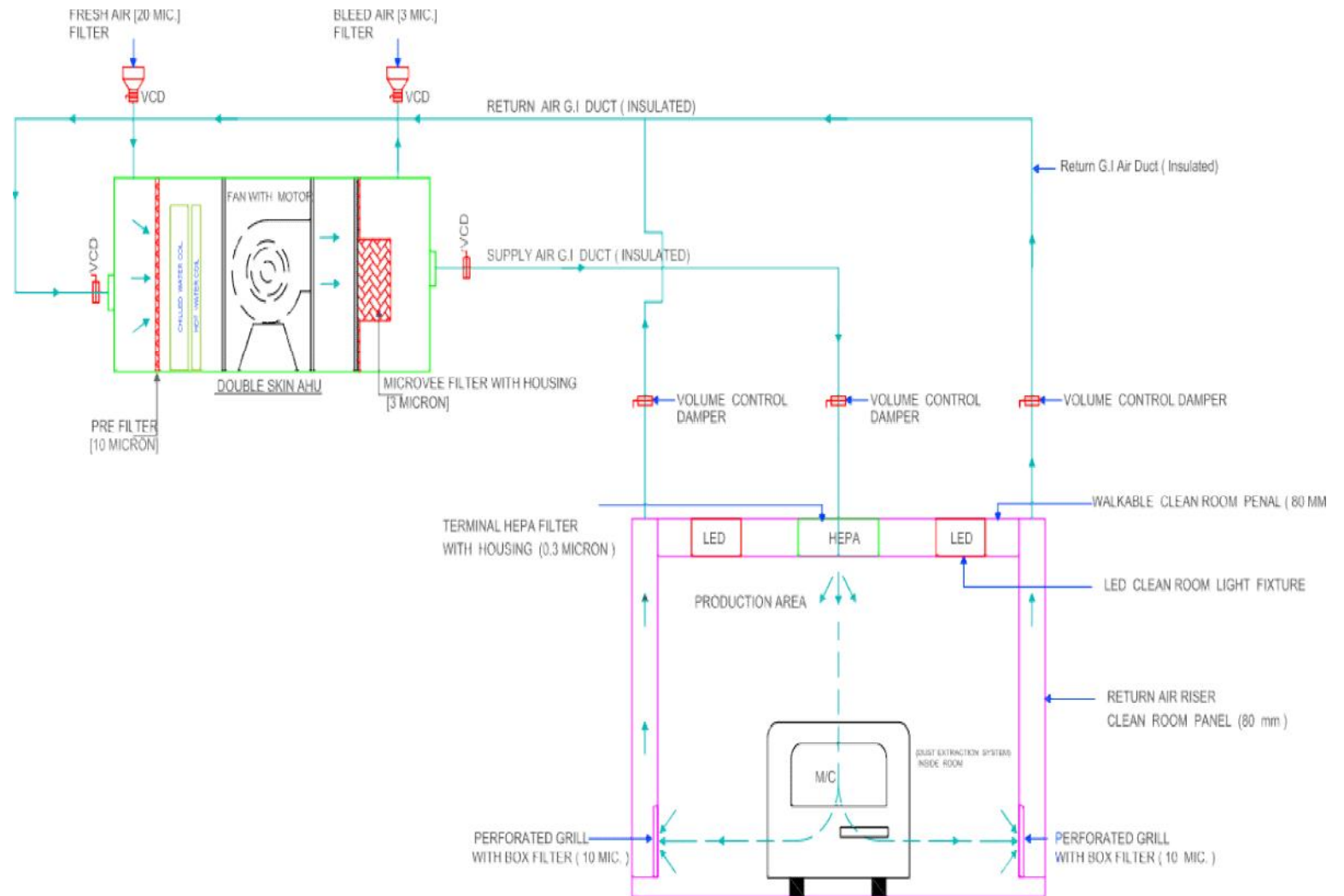
- **DG Set – Supernova Engineering Ltd (500 KVA)**
- **Purified water generation and distribution loop system**
- **Total nos. of AHU's - 32 nos.**

HVAC System

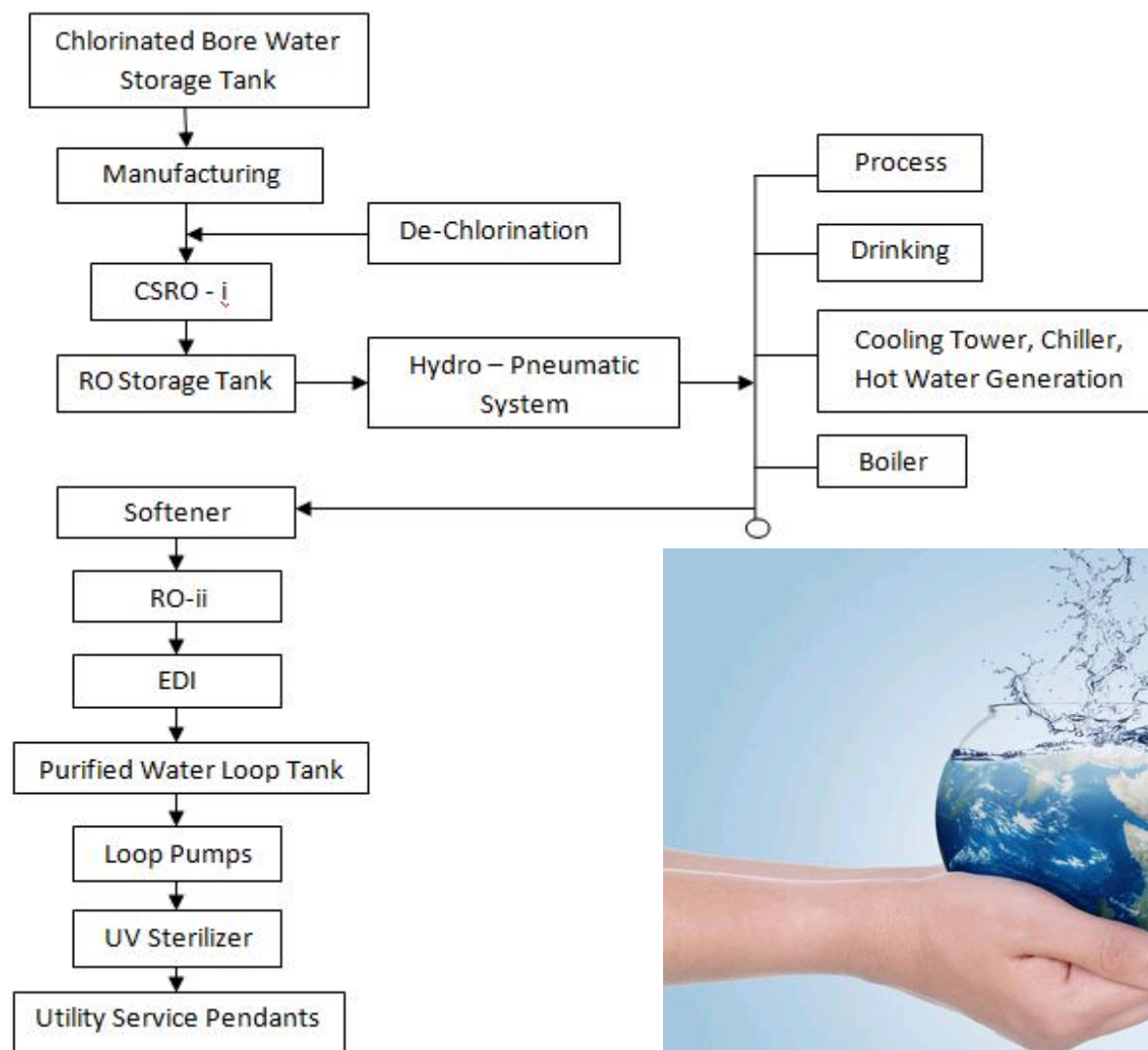
- **Double Skin construction with 25 mm thick pressure injected polyurethane**
- **Foam sandwich insulation with thermal break & internal coving**
- **DIDW Backward curved fans**
- **Motor with IP -55 protection**
- **4-6 row deep chilled water cooling coils**
- **Electrical re-heaters**
- **20-Micron filter at AHU Fresh Air intake**
- **0-micron filter**
- **3-micron filter (after the fan)**
- **0.3-micron HEPA filter
(for Class 100000 area)**



Typical Air Handling System



Typical Water Generation & Distribution



Total Water Handling Capacity of 500 liters/hour

**Production Equipments
(Granulation)**



GRANULATION 1

Fluid Bed Dryer - 400 kgs

Rapid Mixer Granulator - 800 litres

Blender - 2500 litres

Mills and Other Equipments like Sifter



GRANULATION 2

Fluid Bed Processor - 120 kgs

Rapid Mixer Granulator - 400 litres

Blender - 1500 litres

Mills and Other Equipments like Sifter



*Production
Equipments
(Compression
&
Coating)*



**Tablet Press of Cadmach make – 3 Nos.
Ideal Production Capacity of 4,68,000
tablets/hour**



Auto Coater of 48" Capacity

*Production
Equipments
(Packing)*

EPI 2500 ELAMACH make – 2 Nos.

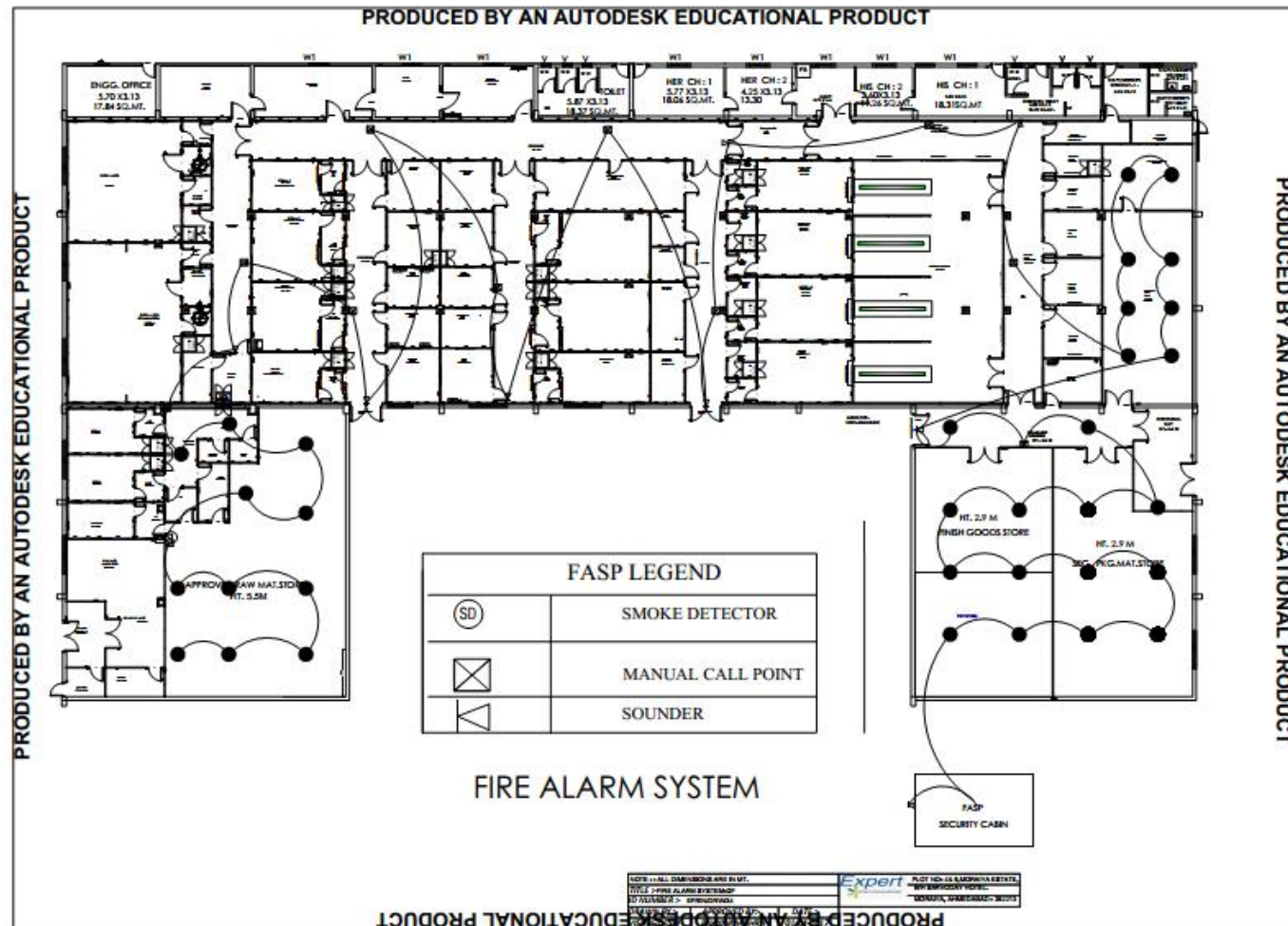
IMAPG Blister Machine – 1 Nos.

Shivshakti Blister Machine – 1 Nos.

Ideal Production Capacity of 30,00,000 tablets/shift



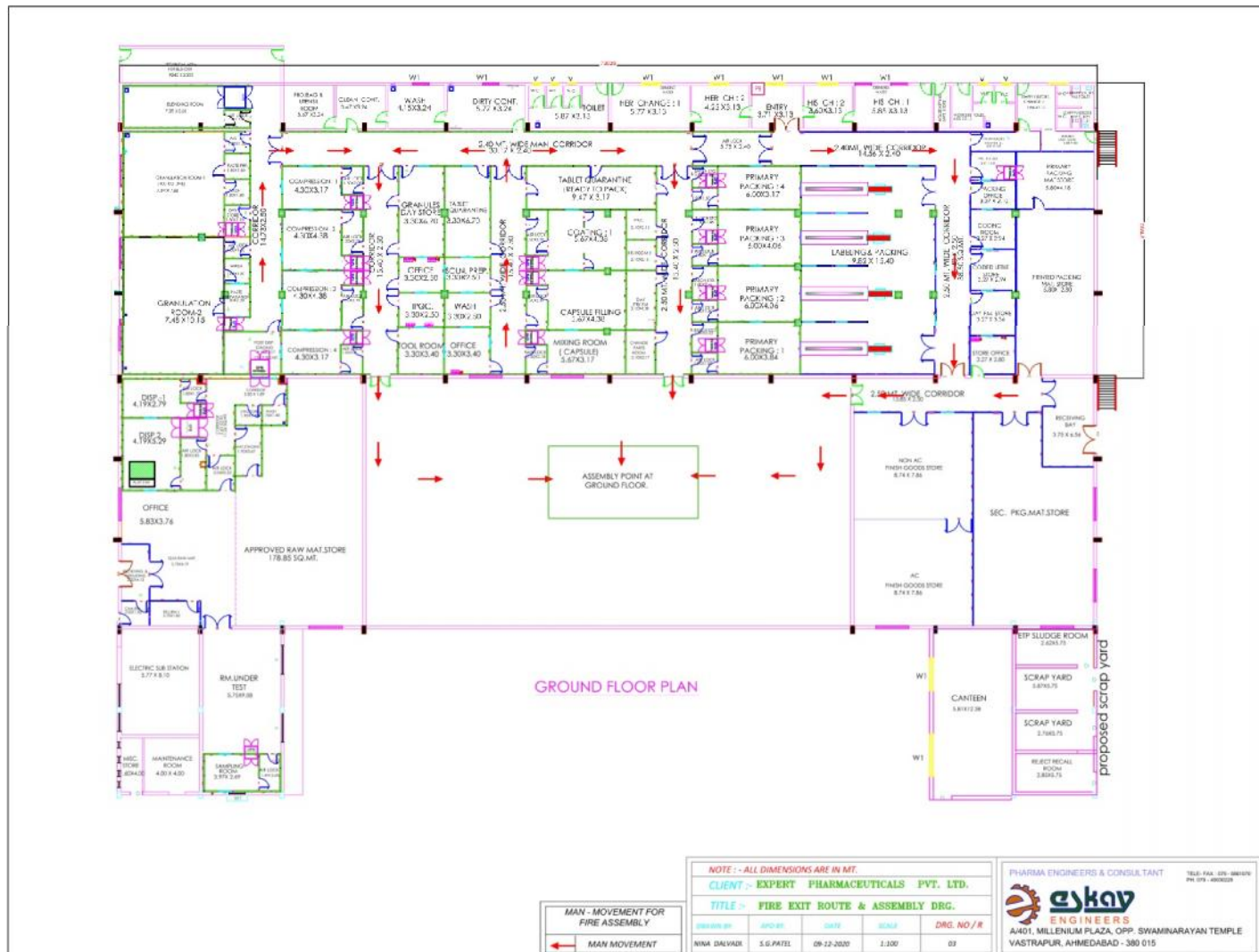
Consent Of Safety



[illegible]

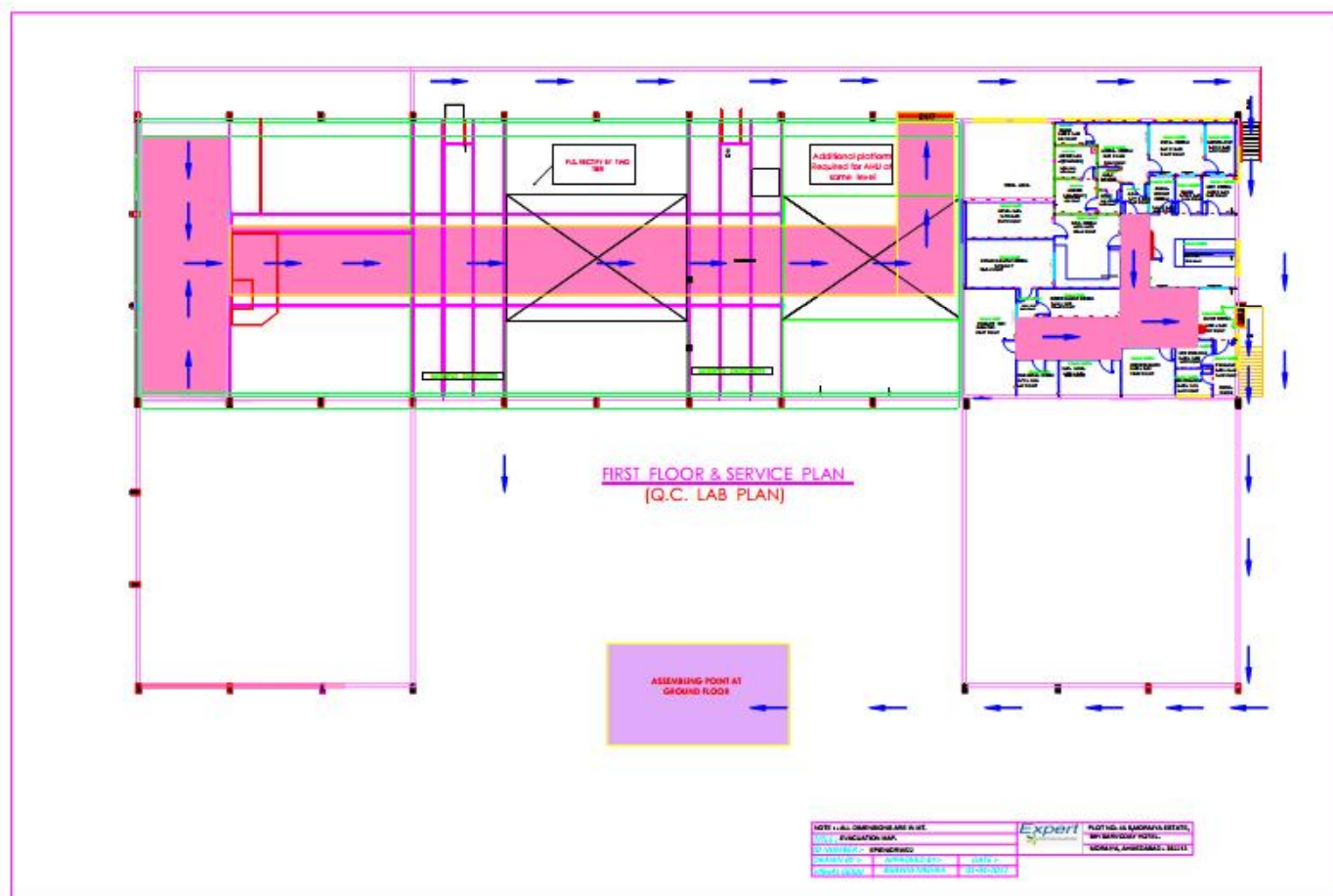
Consent Of Safety

Emergency Exit Ground Floor



Consent Of Safety

Emergency Exit First Floor



FACTORY BUILDING

SECURITY CABIN

COMPOUND WALL

ESTATE ROAD

2.0 m WIDE GREEN BELT

1.0 m WIDE GREEN BELT

ME PLANT WITH COILING TOWER

PLEASE SEE ENLARGE DETAIL A, BKG. 300/42A

ESTATE ROAD

LAY - OUT OF E T P

NO. DESCRIPTION

— CIVIL UNITS

— MECHANICAL EQUIPMENTS

* THIS DRAWING IS THE PROPERTY OF AKSHAR CONSULTANTS, AHMEDABAD. ITS USE FOR REPRODUCTION WITHOUT PRIOR PERMISSION IS PROHIBITED.

NOTES:

* ETP DESIGN IS FOR 3 KL / DAY

* ALL DIMENSIONS ARE IN MM

CLIENT : EXPERT PROBABALITICANS PVT. LTD.,
PLOT NO. 30-31-32-33 & 34-35, PEST NO. 44-1,
B-10 SARVODAYA WHEEL,
VILLAGE: NARGATHA-252, P.O.,
TAL. KANADIA DIST. NIMHEDARA (GUJARAT)

DRAWING : LAY-OUT OF PROPOSED EFFLUENT TREATMENT PLANT

PROJECT NO. : DRG/NO. : 02 DATE : 15.09.14 SCALE : 1/20

DESIGN BY : AKP CHECKED BY : UP APPROVED BY : DIP

REV. NO. : 01

ETP LOCATION AS PER ACTUAL SITE DIMENSIONS GIVEN BY MR. KRASHING FROM CLIENT

CP : DIP DATE : 21.12.14

REV. DESCRIPTION CHD APPRO. DATE

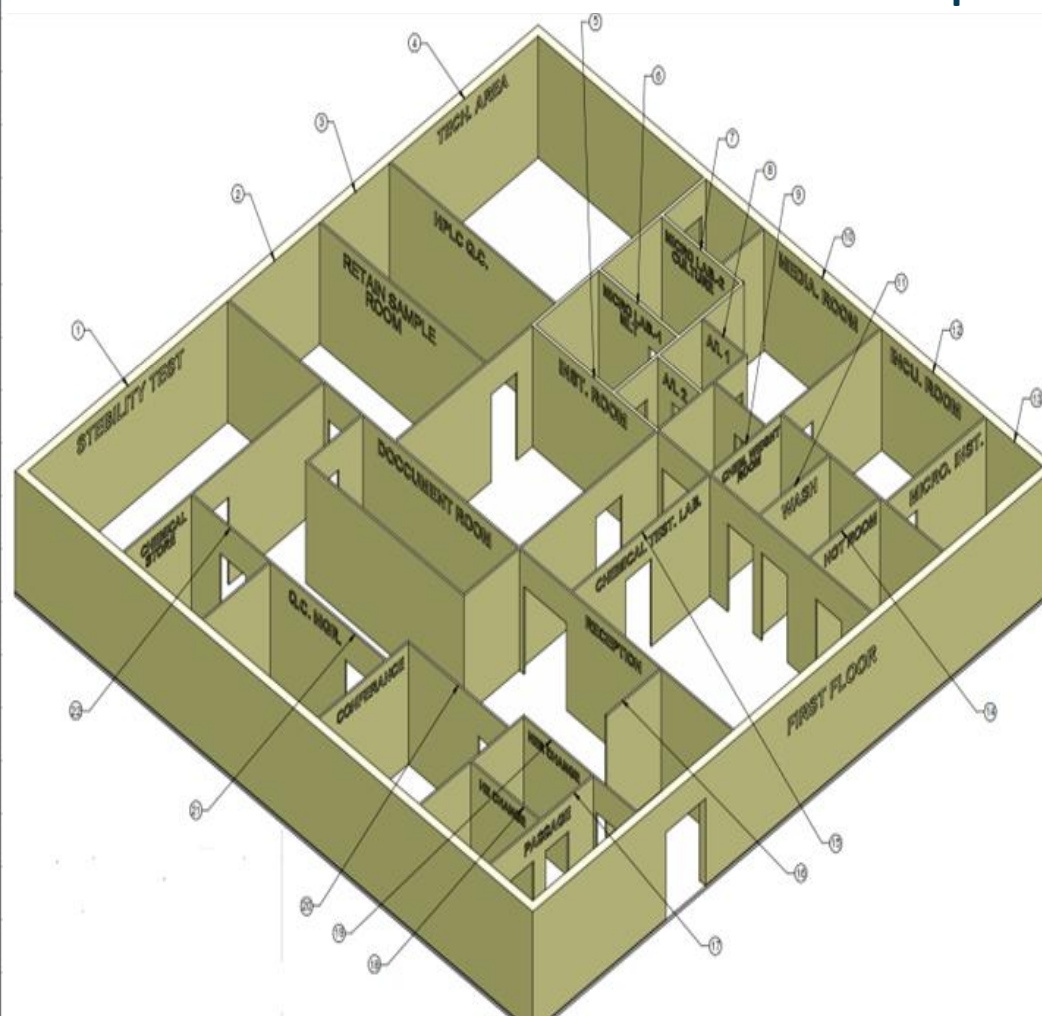
AKSHAR CONSULTANTS

75, LAXMI NAGAR, B-10, SARVODAYA WHEEL,
VILLAGE: NARGATHA-252, P.O.,
TAL. KANADIA DIST. NIMHEDARA (GUJARAT)

Quality Lab View

**Total Area
325 Sq.mtr**

Sr.No.	Description
1	Stability Test
2	Retain Sample Room
3	HPLC QC
4	Tech. Area
5	Inst. Room
6	Micro Lab-1/MLT
7	Micro Lab-2/Culture
8	A/L 1&2
9	Chem.Wt.Room
10	Media Room
11	Wash
12	Incu. Room
13	Micro Inst.
14	Hot Room
15	Chemical Test Lab
16	Reception
17	Passage
18	Male Change
19	Female Change
20	Conference
21	QC Mgr.
22	Chemical Store



Quality Lab Operation

The 325 Sq.mtr lab is designed, as per cGLP guidelines with Citizen make furniture.

The lab is separated from Mfg. area & divided in four areas as :

1. Chemical Analysis
2. Sophisticated Instruments
3. Other Instruments
4. Microbiology

Instrument	Make
UHPLC – 2 Nos.	Thermofisher
HPLC – 1 nos.	Shimadzu
UV Visible Spectrophotometer	Shimadzu
Balances, Karl Fischer, Titrator	Mettler Toledo
Other Instruments	Electrolab or Thermolab

Quality Assurance



*Promise for Life
Promise for Quality*

The Complete Plant is **designed** so as to fulfill the need of highest quality standards set by the World Health Organization and other health organizations though following Quality Management System :

- Stringent Quality Policy
- Validation SOP
- Training
- Equipment Qualification
- Process Validation
- Method Validation
- Cleaning Validation
- Documentation and data control

Passion for a Healthy Future



*Reach
us*



Expert Pharmaceuticals Pvt. Ltd.

Plot No. 4 & 5 Behind Sarvoday Hotel,

Village : Moraiya, Taluka -Sanand,

Ahmedabad 382213

Call - +91 2717 251071/72/73

info@expertpharmaceuticals.com

www.expertpharmaceuticals.com

Passion for a Healthy Future



Gracias

