



Modern India's leading
excipients manufacturer

Greetings, we are
Accent Microcell Ltd.

We are modern India's leading excipients manufacturer. We pride ourselves on our Quality & Delivery commitment. Based in Gujarat - the west of India. Tooled with our '*Brain Squad*' and strong discipline, we have organically grown our network across the globe since our humble beginning in 2001.



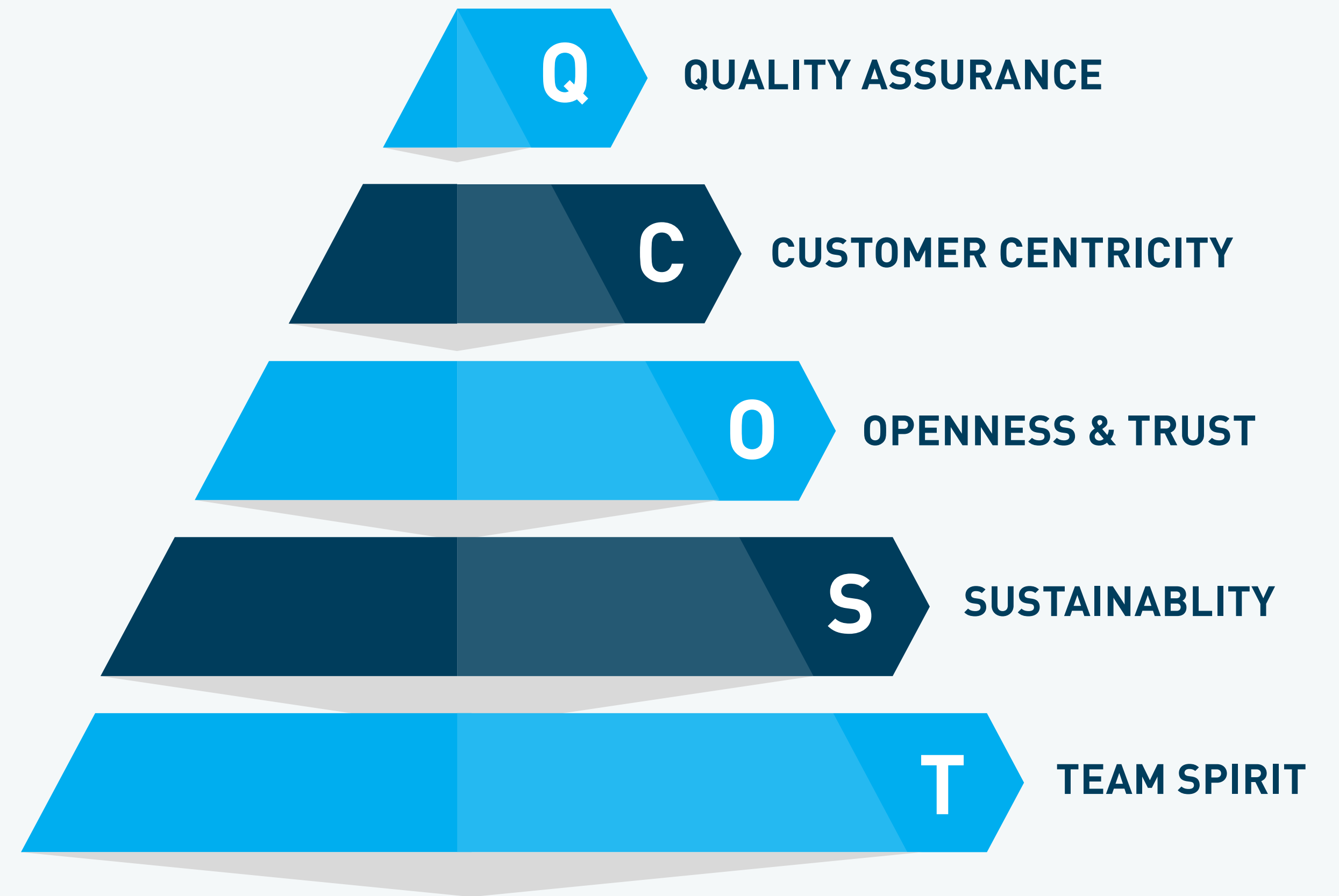
WHAT WE STAND FOR

OUR VISION

With a focus of expansion on a global platform along with value addition to healthcare & life.

OUR MISSION

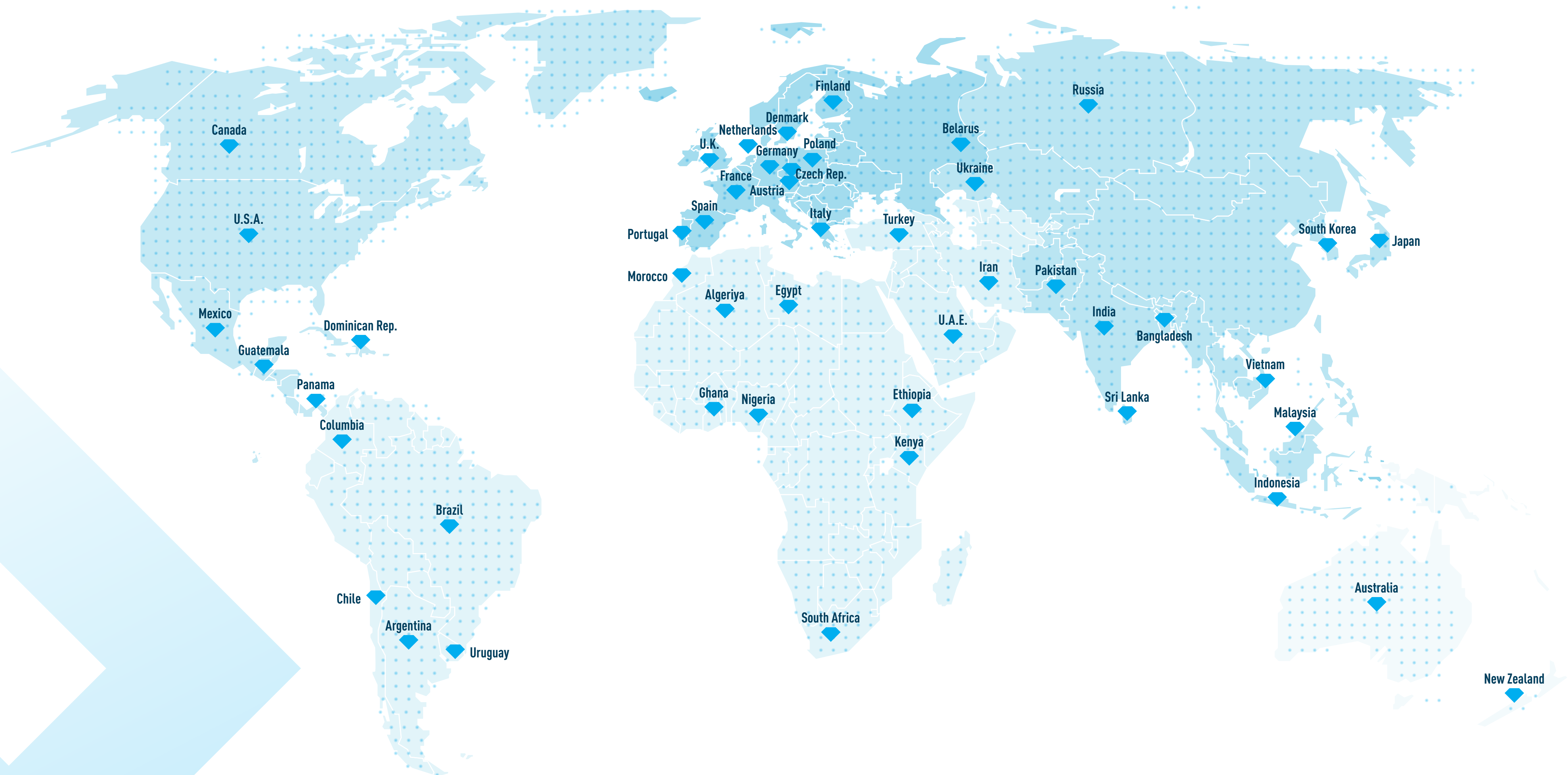
Practising an innovative approach for consistent quality through appropriate groundwork, distinctive strategy & technology.



SECTORS WE SERVE



GLOBAL PRESENCE 75+

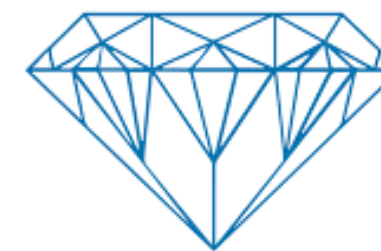


OUR CLIENTELLE

Our customer centric approach and consistent quality, has led us to work with some of the most prominent names in the industry. We strive to keep growing this list bigger.



Direct Food Ingredients



Lehmann & Voss & Co.

PHARMARAW
BANGLADESH



PAY
MAR



aic
— an LBB Specialties Company —



and more...

KEY FIGURES

While our expertise and dedication can not be quantified, here are some number that represent our journey so far...



100+

INTERNATIONAL AUDITS



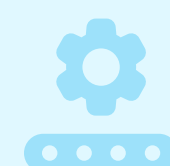
75+

COUNTRIES COVERED



15+

PRODUCT GRADES



16,000^{MT}

PRODUCTION CAPACITY



\$25M

REVENUE TILL DATE



400+

TEAM MEMBERS

QUALITY ASSURANCE

At Accent, our motto is to provide only the highest-quality products to our customers with on-time delivery.

By constantly optimizing our processes, using highest-quality materials, and stringent quality control, we provide the ultimate customer experience.



USP/NF, EP, JP, BP, IP Standardised Grades



OUR PRODUCTS

accel[®]

- Microcrystalline Cellulose (MCC)
- Microcrystalline Cellulose Spheres (MCC Sp)
- Silicified Microcrystalline Cellulose (SMCC)
- Powdered Cellulose (PC)

acrocell[®]

- Croscarmellose Sodium (CCS)

maccel[®]

- Magnesium Stearate (Mg St)



Multi-Function Excipient

Microcrystalline Cellulose is a refined wood pulp, used as a texturizer, an anti-caking agent, a fat substitute, an emulsifier, an extender, and a bulking agent in food production.

Finest element for tableting because of it's purity. Used as an alternative to Carboxymethyl Cellulose and Lactose. Most commonly used in vitamin supplements & tablets.

[DOWNLOAD BROCHURE](#)

accel® 101

- Direct compression tableting
- Wet granulation
- Extrusion & Spheronisation

accel® 102

- Compression similar to accel® 101
- Better flow, larger particle size

accel® 105

- Finest particle size
- Enhanced compressibility for coarse, hard to compress media

accel® 103-112-113

- Reduced moisture content, ideal for moisture-sensitive material

accel® 12

- Outstanding flowability
- Excellent uniformity
- Short mixing time

accel® 200

- Largest particle size
- Increased flowability with min. effect on compression
- Reduced tablet weight*
- Improved content uniformity*

accel® 301-302

- Higher density than accel® 101
- Increased flowability, tablet weight, and uniformity
- For smaller particle size consider using accel® 302

Spray Dryer Grade	Particle Size Distribution			Sieve Analysis (% Retention)			Bulk Density (gm/ml)	LOD (%)	DOP
	D10 (µm)	D50 (µm)	D90 (µm)	60 Mesh	200 Mesh	100 Mesh			
Accel®-101	NMT 30	40 - 60	NLT 80	< 1.0%	< 30.0%		0.27-0.34	NMT 5.0%	NMT350
Accel®-102	NMT 45	70 - 100	NLT 140	< 8.0%	>45.0%		0.26-0.34	NMT 5.0%	NMT350
Accel®-102HD				< 8.0%	>45.0%		0.30-0.36	NMT 5.0%	NMT350
Accel®-103	NMT 30	40 - 60	NLT 80	< 1.0%	< 30.0%		0.26-0.34	NMT 5.0%	NMT350
Accel®-105	NMT 10	10 - 30	NLT 37	NMT 10.0 % on 400 Mesh			0.20-0.30	NMT 5.0%	NMT350
Accel®-112	NMT 45	70 - 100	NLT 140	< 8.0%	>45.0%		0.26-0.34	NMT 1.5%	NMT350
Accel®-113	NMT 30	40 - 60	NLT 80	< 1.0%	< 30.0%		0.26-0.34	NMT 5.0%	NMT350
Accel®-200	NMT 70	150-200	NLT 260	>10.0%		>50%	0.31-0.39	NMT 5.0%	NMT350
Accel®-301	NMT 30	40 - 60	NLT 80	< 1.0%	< 30.0%		0.34-0.45	NMT 5.0%	NMT350
Accel®-302	NMT 45	70 - 100	NLT 140	< 8.0%	>45.0%		0.35-0.45	NMT 5.0%	NMT350
Accel®-12	NMT 45	70 - 100	NLT 140	38 Mesh	94 Mesh	300 Mesh	0.26-0.40	NMT 5.0%	NMT350
				<1.0%	<50.0%	>70.0 %			

Legend

APS : Avg. Particle Size
DOP : Degree Of Polymerization
NMT : Not More Than
NLT : Not Less Than

NSD GRADE	Particle Size Distribution			Sieve analysis (% Retention)			Bulk Density (GM/GL)	LOD (%)	DOP
	D10 (µm)	D50 (µm)	D90 (µm)	60 mesh	200 mesh	100 mesh			
Accel®-101	NMT 30	40 - 60	NLT 80	NMT 1.0	NMT 30.0		0.26-0.40	2.0-5.0	NMT 350
Accel®-102	NMT 45	70 - 100	NLT 140	NMT 8.0	NLT 45.0		0.26-0.40	2.0-5.0	NMT 350
Accel®-103	NMT 30	40- 60	NLT 80	NMT 1.0	NMT 30.0		0.26-0.40	1.0-3.0	NMT 350
Accel®-105	0	0	0	NMT 10 % IN 400 MESH			0.26-0.40	1.0-5.0	NMT 350
Accel®-112	NMT 45	70-100	NLT 140	NMT 8.0	NLT 45.0		0.26-0.40	0.0-1.5	NMT 350
Accel®-113	NMT 30	40- 60	NLT 80	NMT 1.0	NMT 30.0		0.26-0.40	0.0-2.0	NMT 350
Accel®-200	NMT 70	150 - 200	NLT 260	NLT 10.0		NLT 50.0	0.26-0.50	2.0-5.0	NMT 350
Accel®-301	NMT 30	40 - 60	NLT 80	NMT 1.0	NMT 30.0		0.34-0.45	2.0-5.0	NMT 350
Accel®-302	NMT 45	70- 100	NLT 140	NMT 8.0	NLT 45.0		0.26-0.40	2.0-5.0	NMT 350
Accel®-N	NMT 30	40 - 60	NLT 80	NMT 1.0	NMT 30.0		0.26-0.40	NMT 5.0	NMT 350

Legend

APS : Avg. Particle Size
DOP : Degree Of Polymerization
NMT : Not More Than
NLT : Not Less Than

High-Function Excipient

SMCC is a co-processed mix of Microcrystalline Cellulose (MCC) and Colloidal Silicon Dioxide (CSD).

It is like a superior version of MCC, as it brings better flowability to MCC's excellent compaction.

It dual characteristics of brittle fracture as well as plastic deformation leading to superior binding properties. It can even replace granulations, while reducing no. of required excipients.

[DOWNLOAD BROCHURE](#)

Properties

- Excellent compactibility
- High intrinsic flow
- Enhanced lubrication efficiency
- Improved blending properties
- Superior binding properties
- Increased production capacity

Spray Dryer Grade	APS (µm)	Bulk Density (gm/ml)	PROPERTY
Accel®SMCC 50	65	0.25-0.37	Optimal compaction & Decent Flow
Accel®SMCC 50 LD	50	0.20-0.30	Best in class binder
Accel®SMCC 90	125	0.25-0.37	Balance of Flow & Compaction
Accel®SMCC HD 90	125	0.38-0.50	Optimal Flow & Consolidation Best Disintegration Times Low moisture grade available
Accel®SMCC 90 LM	125	0.27-0.39	Equivalent to SMCC 90, with lower moisture content (<3%)

Multi Function Fibre

Powdered Cellulose or Alpha Cellulose is a purified, mechanically disintegrated cellulose prepared from alpha-cellulose of fibrous plant materials. It is an **odorless, tasteless, hydrophobic** powder of various particle sizes, and forms - from flaky & coarse to fluffy & free flowing.

It is commonly used as an anticaking agent, binder, and texturizer in cheeses and pet foods. It is also used in the production of welding electrodes!

[DOWNLOAD BROCHURE](#)

Applications

Food

- As a dietary fibre and low calorie substitute
- For holding moisture in hamburger patties, dumplings, pizzas, etc.
- To add firmness in Bread/pastries, ice cream, cake, sausage skin, etc.
- Antibinding / Anticaking agent in shredded cheese, seasonings, etc.
- Anti-oil absorption in doughnuts, fried chicken, etc.

Pharma

- An alternative to lactose
- As a stabilizer and texturizer
- To add high plastic deformation
- To add high compressibility
- For accelerated disintegration
- Low moisture absorption.

Others

- **Cosmetics & Personal Care** : Anticaking, bulking, opacifying, and viscosity controlling agent
- **Construction** : Thickening agent to modify the viscosity of the mortar
- **Textile & Leather** : Sizing, leveling, and thickening agent
- **Paper** : Anti-sticking agent



Bakery

- Controls flowability
- Gives baking stability
- Gives creamy mouth feel
- Upgrades product stability
- Improves texture
- Acts as bulking agent

Dairy

- Prevent crystallization in ice-cream
- Works as bulking agent
- Improves texture
- Improves texture & mouth feel in processed cheese

Extrusion

- Used in low-calorie spaghetti, macaroni, noodles, etc.
- Raises texture and yield

Fluids

- Brings stability in hot and cold processes
- Improves creamy mouth feel
- Ideal for dietary health drinks
- Improves opacity in milk shakes

Meat & Sea Food

- Enhances texture & mouth feel
- Excellent freeze and appropriate stability
- Holds natural characteristics and juiciness of products

Paints

- Used for better texture
- Controls viscosity
- Improves holding property of paints on the surface

Cosmetics

- Hydrocolloid compatibility aids in manufacturing creams, lotions & various cosmetic emulsions

Welding Electrodes

- Improves electrode surface and burning of electrodes
- Provides better incineration due to very low ash contents

Cement & Ceramics

- Improves binding property
- Absorbs moisture, prevents clogging

Filtration

- Assists in all filtration processes
- Serves as filtering aid in petroleum industry for metal filtration

Bio-Inert Carriers

MCC spheres are **biologically inert, water insoluble, moisture & heat resistant**, and have a high storage stability. This makes them an extremely robust carrier system.

MCC spheres layered with soluble or insoluble API's can be filled into capsules or compacted into tablets. While the tight particle size distribution maximizes content uniformity.

[DOWNLOAD BROCHURE](#)

Advantages

- Consistent and Controlled API Release Profiles
- Excellent compactibility, even in Wet Granulation
- Excellent Content Uniformity
- Multiple Drugs in One Unit Dose
- Requires lower compression pressures
- High Drug Stability
- Superior binding properties
- Increased production capacity
- Greater tensile strength
- Enhanced lubrication efficiency
- High intrinsic flow



Inert Carriers

MCC spheres are **biologically inert, water insoluble, moisture & heat resistant**, and have a high storage stability. This makes them an extremely robust carrier system.

MCC spheres layered with soluble or insoluble API's can be filled into capsules or compacted into tablets. While the tight particle size distribution maximizes content uniformity.

[DOWNLOAD BROCHURE](#)

Grade	Size		Bulk Density (gm/ml)
	(mesh)	(µm)	
Accel® MCC Spheres 100	70 – 140	100 – 200	0.7 – 0.8
Accel® MCC Spheres 200	45 – 70	200 – 355	0.8-0.9
Accel® MCC Spheres 350	35 – 45	355 – 500	0.8-0.9
Accel® MCC Spheres 500	25 – 35	500 – 710	0.8-0.9
Accel® MCC Spheres 700	18 – 25	710 – 1000	0.8-0.9
Accel® MCC Spheres 1000	14 – 18	1000 – 1400	0.8-1.0

Rapid Disintegrant

CCS, is a cross-linked polymer of Carboxy Methyl Cellulose and Sodium. It appears as white, fibrous, free-flowing powder. Without this, tablets may not dissolve appropriately and may effect the amount of active ingredient absorbed, thereby decreasing effectiveness.

[DOWNLOAD BROCHURE](#)

Properties

- Fast tablet disintegration
- Good flowability and mixing properties
- Excellent API stability
- Efficient for low use of levels
- High performance in Direct Compression (upto 5%) and Granulation Processes (upto 3%)
- Effective for combination with both insoluble and filler-binders, such as MCC and DCP
- Insensate hardness of tablet. Used in Solid dosages Vitamins and Nutrition
- Preferable for non-starch base formulations

Rapid Disintegrant

CCS, is a cross-linked polymer of Carboxy Methyl Cellulose and Sodium. It appears as white, fibrous, free-flowing powder. Without this, tablets may not dissolve appropriately and may effect the amount of active ingredient absorbed, thereby decreasing effectiveness.

[DOWNLOAD BROCHURE](#)

Grade	Raw Material	Non GMO	Loss on Drying	Solvent content
CCS Regular	cotton flock		max. 10%	max. 1% MeOH
CCS Premium	wood pulp	✓	max. 10%	max. 0.5% EtOH
CCS Premium LM	wood pulp	✓	max. 6%	max. 0.01% EtOH

Lubricant

Magnesium Stearate contains 2 equivalents of Stearate joined to a magnesium atom. It is a very very fine white powder, greasy to the touch, and is insoluble in water and in ethanol.

MS acts a lubricant, it prevents the ingredients from sticking. Thus speeding up production. It also prevent molecular clumping which ensures accurate dosage of each pill.

[DOWNLOAD BROCHURE](#)

Applications

- Used as a lubricant in Tableting & Pharmaceuticals
- Used in paints and varnishes as a flattening agent
- Soothing agent in Talcum Powder & Cosmetics
- Stabilizer & Lubricant in Engineering Plastics
- As a stabilizer and lubricant for plastics
- Emulsifying agent in cosmetics
- An anti-caking agent in foods

PACKAGING OPTIONS

We provide all the necessary options to enable safe global shipping. Storage containers are tightly sealed under low moisture and heat conditions. The containers are kept in a cool and well-ventilated area and are stored under room temperature.

**20-25 Kg Pack sizes available
with an option of the following containers:**



Paper Bags



Corrugated Boxes



HDPE Drums



Fiber Drums

Pallet Options:

- Heat Treated Wood Pallets
- Plastic Pallets

All above packing options are with LDPE inner liner.

CONTAINER STUFFING

We provide professional and efficient container stuffing services to all our global clients according to the table below:

Sr. No.	Packing Type	20' Container				40' Container			
		No. of Bags/Box/ Drum	Pallets in No.	Quantity (KG) in Each Pallet	Total QTY (KG)	No. of Bags/Box/ Drum	Pallets in No.	Quantity (KG) in Each Pallet	Total QTY (KG)
1	Paper Bag (20 Kg)	500	20	500	10000	1000	40	500	20000
						1200	40	600	24000
2	Carton Box (20 Kg)	270	10	5400	9000	540	20	10800	18000
		180	10	3600		360	20	7200	
3	Carton Box (25 Kg)	360	20	450	9000	720	40	450	18000
4	Fibre Drum (25 Kg)	160	10	400	6000	640	40	400	16000
		80	10	200					
5	HDPE Drum (25 Kg)	160	10	400	6000	640	40	400	16000
		80	10	200					
6	Euro Pallet loading in bags					240	10	480	20000
						760	38	400	



THE ACCENT BENEFIT



Wide Range of Grades to suit your needs

We carry all the possible grades for all of our products to enable you to formulate your best with flexibility.



Price Stability & Document Support

We provide long term Price stability and document support as per regulatory guidelines. To enable smooth trade.



Customised Product & Packaging Options

We provide commercial shipment from 20kg to 500kg and batch sizes up to 10MT. Which improves consistency, reduces batch analysis cost.



Always Up-To-Date Technology

We make sure all our machinery, processes, and personell are always updated to latest market standards.



Expert Analysis & Testing Facility

In addition to an global standard microbial lab, we have and professional team to enable expert analysis & testing.



On-Time Delivery Commitment

We pride ourselves on our delivery commitment, we stock buffer inventory of all grades for all of our products to make this possible.



Global Pressence In 75+ Countries

Being in the industry for decades has enabled us to have a global network, meaning we can provide great service no matter where you are.



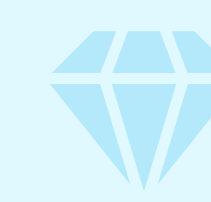
Glass Lined Reactor & SS-316L MOC

All of our reactions are contained in Glass Lined Reactors. And further processes happen in SS-316 / SS-316 L materials of construction.



Well Certified & Globaly Standardised

We are EXCIPACT certified, ISO 9001:2015, Halal, Kosher, GMP, GMO verified, State FDA approved; and all our grades follow USP/NF, EP, JP, BP, IP.



Highest Quality Raw Materials & Process

We use SAPPI Pulp to ensure best raw material origin. Our entire manufacturing line is in an enclosed structure to avoid any contamination.

JOURNEY OF A DECADE

2001

Incorporated the company



2005

Economic MCG grade achieved

2008

Established global presence

2011

Obtained GMP certificate



2013

New Unit at Dahej SEZ with 12000MT/A capacity



2018

EXCIPACT certification



2004

Received ISO 9001 certification



2006

Other excipients added to the portfolio



2010

Set up Microbial Lab meeting international standards

2012

Converted to Private Limited

2016

FSSC 22000 certified

FSSC
22000

2022

Two new manufacturing units coming up...



WE ARE HERE

OUR UNITS

Unit 1 [excipients] | 15km away from HO

Survey No. 533/P, Paldi, Kankaj, Pirana Road, Ta. Daskroi, Dist. Ahmedabad - 382425, Gujarat, India

Phone: +91 75758 03926

Unit 2 [excipients] | 250km away from HO

Plot No. Z/59-60-63, Dahej-SEZ, Part-I, Ta. Vagra, Dist. Bharuch - 392130, Gujarat, India

Phone: +91 79 4004 2367

THE NEXT CHAPTER

Leaping into our next growth phase,
we're under the process of adding

NEW UNITS

+4

Unit 3 [excipients]

Navagam, Near Ahmedabad city | 20 KM away

Unit 4 [excipients]

Pirana, Near Ahmedabad city | 15 KM away

Accent Biosciences Pvt. Ltd. [APIs & Intermediates]

Saykha GIDC, Between Mumbai & Ahmedabad | 250km away

THANK YOU!



Accent Microcell Ltd.

314, Shangrilla Arcade, Shyamal Cross Roads, Anandnagar
Road, Satellite, Ahmedabad - 380015, Gujarat, India.

eMail

info@accentmicrocell.com
ab3@accentmicrocell.com

Phone

+91 79 40042367 / 32459689
/ 32522633 / 40094906

Fax

+91 79 4009 4907

www.accentmicrocell.com