



Our Manufacturing Plant at Indore, Madhya Pradesh, India

H & H Nutraceutical Plant Aerial View



ABOUT US

- We are the contract manufacturing company, that not only believes in excellent Research & Development of new products through science-based innovation but also is strategically aligned to deliver a positive impact to our people.
- We work and implement innovative ideas because we believe where innovation is a culture, it governs every strategy of the company.
- We follow our primary values of QUALITY, EXCELLENCE and TEAMWORK
- Our world Class plant is designed as per current CGMP practices following – WHO/ GMP / FSSAI / NSF / HACCP/FDA norms.

What makes us different?



Our Parent Company

25 years of experience in 3PL/4PL warehousing & Warehouse infrastructure

End-End services : Third-party Logistics & Manufacturing

Industry standing & reputation in the logistics industry

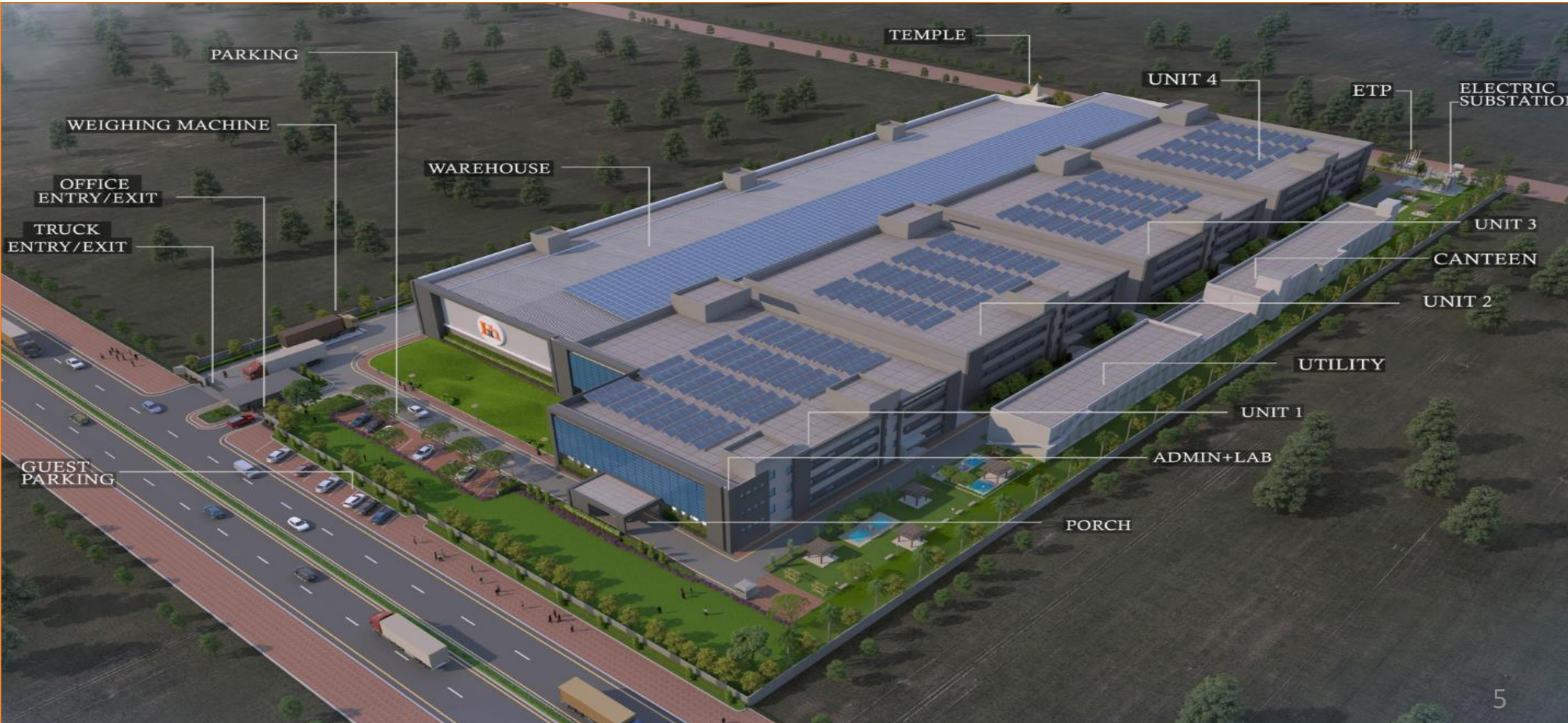
Experience in working with top notch companies from different industries

Compliance savvy

Presence in 12 states in India. Having infrastructure about 2.5 million area.

We possess an overbearing and striking list of **24 clients @ 66 account/locations** representing different verticals & industries.

Complete Project Layout



Plants Features

- ❑ Plant Location - Indore - MP– Central India (Logistical Advantage).
- ❑ Manufacturing Area – Lean Design, ISO Class 8 Manufacturing Area.
- ❑ Highly sophisticated and technologically equipped Manufacturing, R&D, Quality, Analytical and Microbiology Lab.
- ❑ Purified water system- RO,EDI & Ultrafiltration-USP Grade.
- ❑ Utilities – Transformer, DG set, Boiler, Water Chillers, Oil free Air Compressor.
- ❑ ETP – Effluent Treatment Plant – ZLD – Zero Liquid Discharge. (Environmental Friendly)
- ❑ Dedicated Air Handling units (AHUs and DHUs) with automatic Environmental control & Monitoring System.
- ❑ Boundary wall made from fly ash bricks.
- ❑ No water bore well at site, Good quality treated water supply for process.
- ❑ Rainwater harvesting system.
- ❑ Fire hydrant system.
- ❑ Trained, highly skilled and experienced manpower.

Our Capabilities

Third Party - Contract manufacturing for multinational and Indian companies, including exports.

B2B – Business to Business (P2P) product manufacturing and sales.

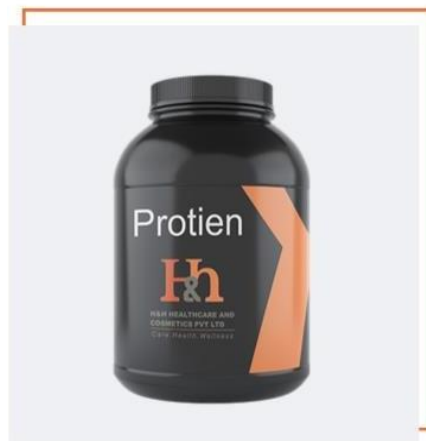
LL – Loan License – Business to Business product processing conversions.

New product **Research & Development** to associated businesses in India and abroad for enhancing their product portfolios and formulations.

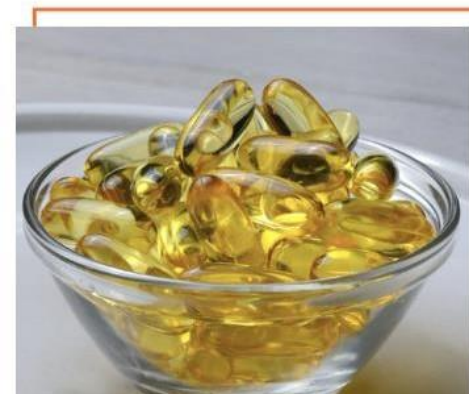
Our Technology Lines



POWDERS



SOFT GELS



HERBALS



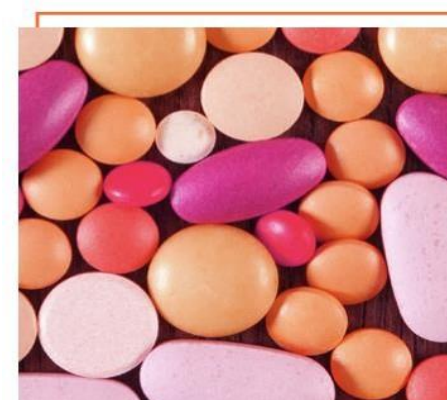
COSMETICS



CAPSULES



TABLETS



Powder Machine Capacity



Process	Machine Capacity	Output (Kg) /Hr	Output/ Shift	Output/ Shift (Kg)	Allocated Machine
Mixing	1500 Kg	1500	12000	12000	Bectochem Lodige
Mixing	1500 Kg	1500	12000	12000	Blender Paddle Mixer Prism

Powder Filling and Packing capacity



Powder Filling/Packing				
Process	Machine Capacity	Allocated Area	Output (Nos)/Shift	Allocated Machine
Pillow Type Pouch	50 Pouches/Min	1	24000	PK 30 AG
(5 to 100 gm)				
Pillow Type Pouch	50 Pouches/Min	1	24000	PK 70 AG
(100 to 1000 gm)				
HDPE BOTTLE	30 BPM	1	14400	CFL Line-1
(50gms to 1Kg)				
TIN FILLING	40 BPM	1	19200	CFL Line-2
(200gms to 400gms)				
HDPE BOTTLE	15 BPM	1	7200	CFL Line-3
(2Kg, 3Kg & 5Kg)				

Soft Gel

Process	Equipment Details	Allocated Machine
Soft Gel Manufacturing Line	Medicine Mixer	Parle
	VM600 (Veg & Gelatine Melting Tank)	CUBE GEL, Korea.
	T150V (Encapsulation Machine)	CUBE GEL, Korea.
	Capsule Drying and Polishing Machine	Parle



Soft Gel Machine Capacity



SOFTGEL MANUFACTURING								
Process	Machine Capacity	Output(Kg)/Hr	Output/Shift	Allocated Area	Out Put/Shift (Kg)	Output (Nos)/Shift	Allocated Machine	
Gelatine Manufacturing								
Melting Tank	600 LTR	80	480	1	480		Parle	
Medicament Manufacturing								
Mixing	350 kg	43.75	262.5	1	262.5		Parle	
Encapsulation Machine/Semi Drying								
Filling	1,00,000/Hr	NA	NA	1	-	8,00,000	CUBE GEL	
Final Drying								
Drying	8,00,000	NA	NA	1	-	8,00,000		

Tablet Manufacturing



Process	Machine Capacity	Output (Kg)/Hr	Output/Shift	Output/Shift)	Allocated Machine
Granulation	120 Kg	30	180	180 Kg	Parle
Compression	37 “D” Tooling	Na	Na	6,00,000 Nos	Parle
Compression	27 “D” Tooling	Na	Na	2,25,000 Nos	Parle
Coating	48” Pan	33.33	200	150 KG	Prism

Capsule Manufacturing

Process	Machine Capacity	Output (Kg)/Hr	Output/Shift	Output/Shift	Allocated Machine
Capsule Filling	PF 400	NA	Na	1,80,000	Parle
Counting & Filling	CFM120	Na	Na	43,200	Parle





Quality Unit

- Ours is a fully equipped high-tech lab to perform all the test for products manufactured at the site.
- The lab is resourced with trained and qualified analysts to perform the tests and release the batches for market
- Lab performs testing at various stages of manufacturing.
- IPQC testing are carried out at the manufacturing facility itself by IPQC analysts.
- Raw material, packing material and finished products
- After Finished product testing batch release for dispatch

Laboratory Equipment's

- Instrumentation Room



Laboratory Equipment's

- Wet Chemistry Lab



UTILITIES

- The HVAC system is installed on the service floor and designed as a recirculation system having Supply and Return Blower Fan.
- The Air Handling Unit (AHU) system is totally separate and dedicated for each module depending upon the criticality of operations.
- Room Air passes through return riser via 10 Micron pre filter to plenum mixing chamber and pass to 3 micron fine filter having efficiency of 95 % to arrest down 3- micron particle.
- Centrifugal blower sucks the filtered air and pass it through 0.3 micron HEPA filter (installed terminally in Plenum having efficiency of 99.997 %) to the core areas.
- Clearing of filters is carried out periodically.

Contact Details

Manufacturing Site Address:

Plot No. -51, Smart Industrial Park.

Near Natrip, Dhar,

Pithampur -454775

Harshul.rai@hnhhealthcare.in

Vaibhav.rai@hnhhealthcare.in

Yogesh.shah@hnhhealthcare.in

Registered Office Address:

37-38, Lasudia Mori, Dewas Naka,

A.B. Road, Indore MP. 452010



A stylized sun graphic on the left side of the slide. It features a solid yellow circle representing the sun's disk, with several short, curved yellow lines above it representing sunbeams. The background is split into an orange upper-left section and a white lower-right section by a curved line.

Thank you